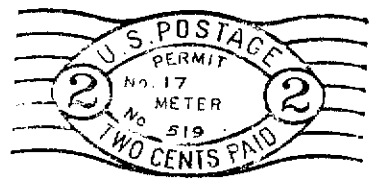
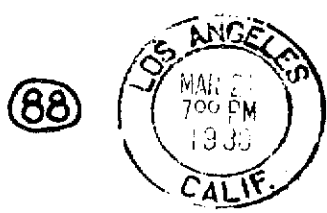
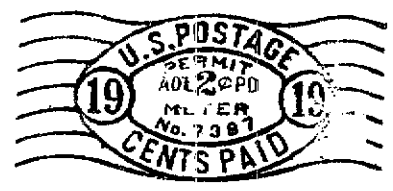
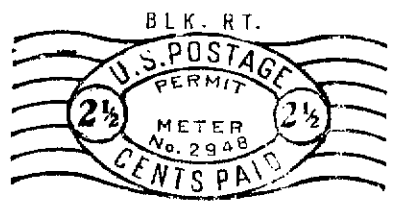
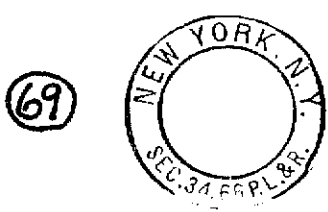
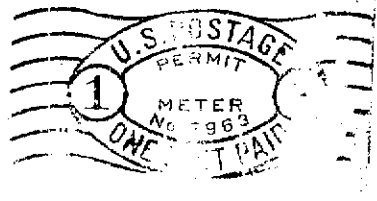
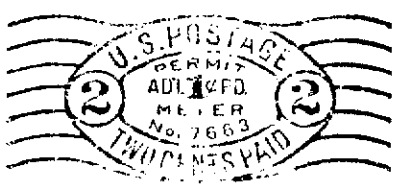
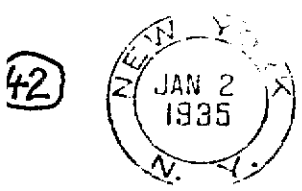
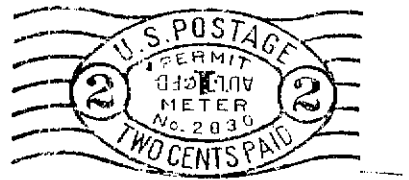
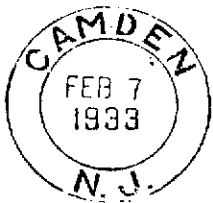
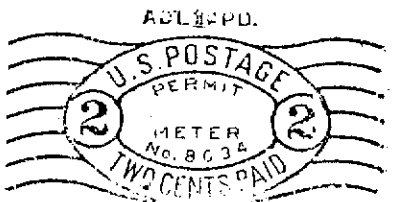
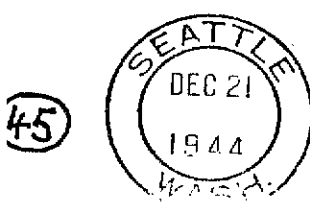
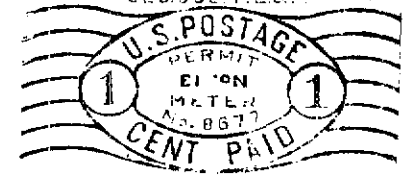
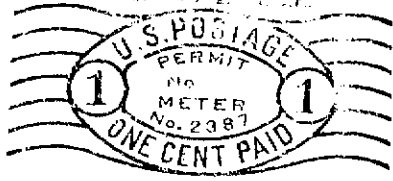
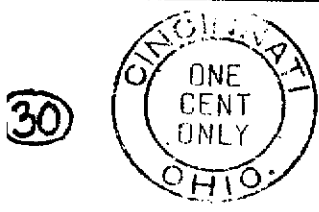
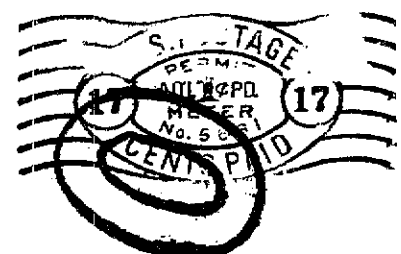
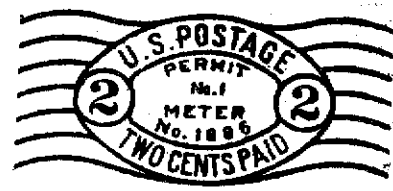
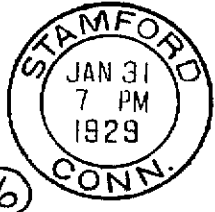


X Adhesive Stamps are Out-of-date!



United States		MIN. BID
1.	BA1, 2c red M1 P1 cover with blemish left of TM, o/w fine. Cornercard of Universal Stamping Machine Co., i.e. P-B.	15.00 P
2.	BA1, 1c green M1013 P10, "CITY HALL STA." in TM, cut.	8.00
3.	BA1, 1c green M1040 P12, top strip.	8.50
4.	BA1, 1c green M1055 P9, top strip.	8.50
5.	BA1, 2c red M4 P6 on large manila piece.	6.50
6.	BA1, 2c red M5 P1, cut.	6.50
7.	BA1, 2c red M9 P20, cut.	6.50
8.	BA1, 2c red M1012 P7, "NORTH PHILA. STA." in TM, #10 cover with toning at left not affecting meter.	10.00
9.	BA1, 2c red M1021 P12, #10 cover.	20.00 P
10.	BA1, 2c red M102B P19, "FEDERAL RESERVE STA." in TM, large piece.	7.50
11.	BA1, 2c red M1036 P7, "NORTH PHILA. STA." in TM, cut.	8.00
12.	BA1, 4c brown M1006 P6, cut with clipped corner. (R)	3.00 P
13.	CA1, 1c purple M1094 P292 with "advertising/aids/democracy" slogan, top strip. (R)	4.00
14.	CA1, 1c purple M2365 P292 with NRA slogan, cut (R)	4.00
15.	CA1, very early 2c reds all dated 1922, twelve items: 6 covers, 1 strip, 5 cuts.	10.00
16.	CA1, 2c red M1886 P1 with "X Adhesive/Stamps/are Out-of-date!" slogan, cover used by Pitney-Bowes.	10.00 P
17.	CA1, 5c red cover to Germany marked "per steamer PARIS".	5.00
18.	CA1, 5c red on manila front.	3.00
19.	CA1, 5c red on large manila piece.	3.00
20.	CA1, 6c orange proof dated NOV 15 1922, manila cut.	4.00
21.	CA1, 8c citron cut (R)	6.00
22.	CA1, 12c red on registered manila cover (R)	10.00
23.	CA1, 12c red on manila cut, "STA. K" in TM. (R)	6.00
24.	CA1, 12c red on 2x6 manila cut (R)	6.00
25.	CA1, 14c apple green cut (R)	10.00
26.	CA1-1, 1c+1/2c gold cut, M1717 P292.	2.50
27.	CA1-1, 1c+1/2c gold cut, M2253 P310.	2.50
28.	CA1-1, 4c+1/2c brown on manila cut (VR)	15.00 P
29.	CA1-2, "ONE CENT ONLY" green, M1911 P1 cut.	2.50
30.	CA1-2, "ONE CENT ONLY" green, M2387, P number missing, "No" only on permit line, cut.	10.00 P
31.	CA1-2, "ONE CENT ONLY" M2391 P1, green, purple, blue cuts.	8.00
32.	CA2, 1c purple M2118 and M8507 with "advertising/aids/democracy" slogan, two strips.	4.00
33.	CA2, 8c purple, cut (R)	5.00
34.	CA2, 8c red, top strip (R)	5.00
35.	CA2, 8c blue, front (R)	6.00
36.	CA2, 8c red, cover (R)	7.50
37.	CA2, 10c blue M1761 on #6 unaddressed airmail cover (VR)	12.50
38.	CA2, 12c blue M2018 on top strip (VR)	12.00
39.	CA2, 12c red unrecorded no. M2063 on 9x11 cover to Holland with 2c adhesive (Scott B41) added. (Vert. fold does not affect stamps) (VR)	12.00
40.	CA2b, 1c red with TM inverted on cover, printing skips (R)	5.00 P
41.	CA2-2, "ONE CENT ONLY" M1624 purple, cut.	2.50
42.	CA2-3a, 2+1c purple M7663, top strip with small TM (VR)	15.00 P
43.	CA2-3a, same as previous but 2x4 cut (VR)	10.00
44.	CA2-3b, 2+1c red M2830 with "AD'L 1c PD" inverted, cut.	5.00 P
45.	CA2-4, 2+1c purp. M8034, 1c revalue above frank, cov (R)	25.00 P
46.	CA3, 4-1/2c brown, cut.	2.50
47.	CA3, 7c red, top strip (R)	8.00
48.	CA3, 7c black on manila cut (R)	5.00
49.	CA3, 9c red on manila cut (R)	6.00
50.	CA3, 17c red registered manila front (R)	10.50
51.	CA3, 17c red w/o TM on registered manila front (R)	10.00
52.	CA3, 17c manila top strip w/o TM (R)	5.00
53.	CA3, 17c red, cut (R)	5.00
54.	CA3, 17c red on manila cut w/o TM (R)	3.00
55.	CA3, 18c red, top strip w/o TM (R)	10.00
56.	CA3, 19c red on registered cover w/o TM (R)	12.00
57.	CA3, 19c red on registered manila cover w/o TM (R)	10.00
58.	CA3, 19c red, cut w/o TM (R)	5.00
59.	CA3, 20c red on registered cover w/o TM (R)	10.00
60.	CA3, 20c red, cut (R)	5.00
61.	CA3, 22c red on registered cover (R)	10.00

110

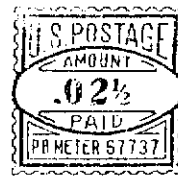
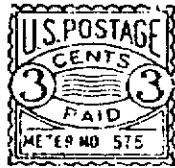


RRR

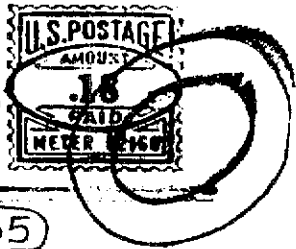


113

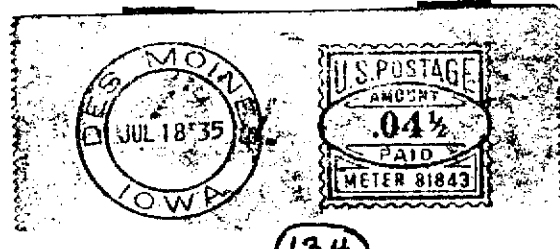
117



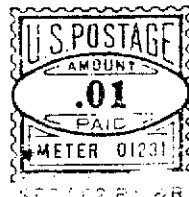
138



135



134

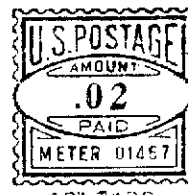


142

139



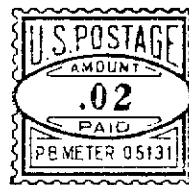
OUR POSTAL ZONE IS KANSAS CITY 10, MO



143

Buy WAR STAMPS & BONDS FOR VICTORY

162



156

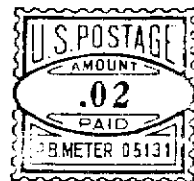
164

WAR CALLS COME FIRST



THE MEN'S STORE Where Smart Men Buy Smart Looking Clothes

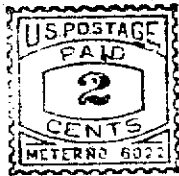
165



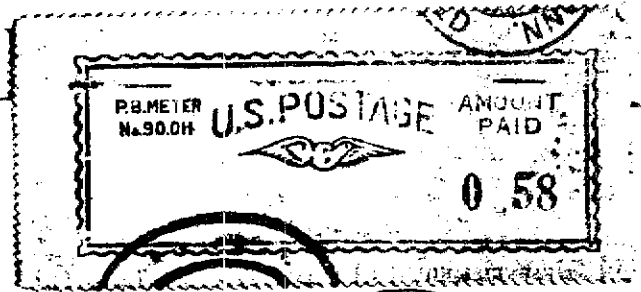
SEP 15 1957 U.S. POSTAGE Z.W.L. AMPENOR Meter 3210 First International Metered Postage Exhibition CHICAGO, ILL.

174

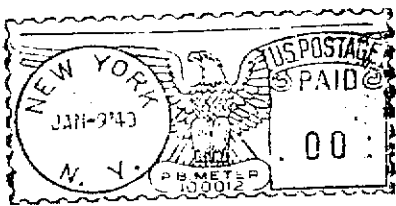
62.	CA3, 22c red on manila cut (R)	7.50	
63.	CA3, 24c red on registered cover w/o TM (R)	12.00	
64.	CA3a, 1c purple, unrecorded M8677 top strip with P no. inverted (R)	8.00	P
65.	CA3b, 5c red M5660 top strip with "VIA AIR MAIL" above (R)	7.00	
66.	CA3-2, "ONE CENT ONLY" green, top strip (R)	8.00	
67.	CA3-2, as previous, cut (R)	7.50	
68.	CA4, 1-1/4c red, top strip	7.50	
69.	CA4, 2-1/2c blue M2948, top strip (VR)	12.50	P
70.	CA4, 4-1/2c red, large piece	7.50	
71.	CA4, 7c purple, top strip (VR)	12.00	
72.	CA4, 9c red, strip	5.00	
73.	CA4, 18c red manila strip w/o TM	7.50	
74.	CA4, 18c red manila cut w/o TM	4.00	
75.	CA4, 21c red M8626 on manila top strip w/o TM (R)	10.00	
76.	Another (R)	10.00	
77.	CA4, 21c red M8626 on manila cut w/o TM (R)	5.00	
78.	CA4-1, 17+1c purple on 2-3/4 x 3-1/2 reg. piece w/o TM (R)	7.50	P
79.	CA4-1, 19+2c red M7387, cut w/o TM (VR)	16.00	P
80.	CA5, 2c red M6242, top strip (R)	6.50	
81.	CA5, 3c red M2781, top strip (R)	6.50	
82.	CA6, 3c purple, front	6.50	
83.	CA6, 4c purple on unaddressed cover	3.00	
84.	CB1, 4c brown on small manila cut (R)	4.00	
85.	CB5, 1-1/2c green M1504 P38 on manila cut	5.00	
86.	CB7, 3c red M1161, front	5.00	
87.	CB7, 3c red M1349, cut	3.50	
88.	CE1, 2c red m108, cut	4.00	P
89.	CF3, 2c red m519 P17, cut (R)	15.00	P
90.	CF4, 2c red mM10087 p559, cut (R)	10.00	
91.	CF4, 2c red mM10097 p1918, cut (R)	6.50	
92.	CF4, 2c red mP10031 p13, cut (R)	6.50	
93.	CF4, 3c red mP10031 p13, cover (R)	15.00	
94.	CG1, 2c m267, cover	3.00	
95.	CG1, 2c m1601, cover	3.00	
96.	CG1, 3c m587, cover	3.00	
97.	CH3, 2c red m554, cut (R)	4.50	
98.	CH3, 3c red m733, two covers with diff. TMs (R)	5.00	
99.	CH5, 2c red m707, cut	4.00	
100.	CH5-1, 2+1c purple, cover	5.00	
101.	Nine CH cuts, four diff. CH3 3c, two diff CH5 3c, three diff. CH5-1 2c+1c	5.00	
102.	CH6, 1-1/2c red m530 on manila top strip	11.00	
103.	CJ1, 3c purple M-3, cover (R)	10.00	
104.	CK1, 5c blue m9239, cut (R)	3.00	
105.	CK1, 8c red m9407, top strip (R)	5.00	
106.	DB1, 25 strips and tapes, 22 diff. values from 1c to 25c including 13, 19 and 22 cents	20.00	
107.	DB1, 1c, 7 cuts all diff. colors (red, purp, green, blue, black, orange, gold)	5.00	
108.	DB1, 1c and 4c on POSTAGE METER CO. cover with slogan	3.00	
109.	DB1, 2c and 17c on manila registered cover w/o TM	5.00	
110.	DB1, two impressions of 1 dollar on tape, M15121 (RRR)	17.50	P
111.	DB2, 6c and 15c on tape (R)	7.50	
112.	DB2, 2c, 10c and two 20c on tape (tear) (R)	7.50	
113.	DB6, 2c red m9000, cut (VR)	20.00	P
114.	DB9-1, 2c with "AD'L 1c PAID" above frank, cover	7.50	
115.	DB10, 2c and two 10c on top strip (R)	6.50	
116.	DC1, 16 covers and two fronts with all diff. meter nos. from 488 to 894	5.00	
117.	DC2, 3c red m575, cut (R)	7.50	P
118.	DC5, 2c red m1176, top strip (R)	6.50	
119.	DC9, 4c red, two impressions on cut (R)	6.50	
120.	DC9, 8c red, strip (R)	6.50	
121.	DC9, 15c red, cover	5.00	
122.	DD1, 7c and 8c m5104 on top strip (somewhat faint) (VR,R)	12.50	
123.	DD1, 9c purple m5115, top strip (VR)	12.50	
124.	DD1, 12c purple m5037, cut (R)	5.00	
125.	DD2, 10c and two 13c on tape m5625 VR	12.50	
126.	DD2, 15c purple m5636, cut (R)	5.00	
127.	DD2, 6c and 20c m5270 on tape (R)	5.00	
128.	DD2, 2c and 21c tapes w/o TM on registered cover (R)	5.00	



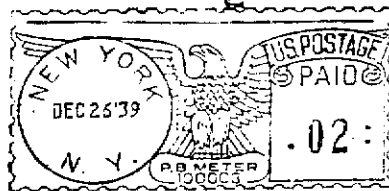
172



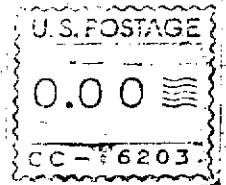
177



186

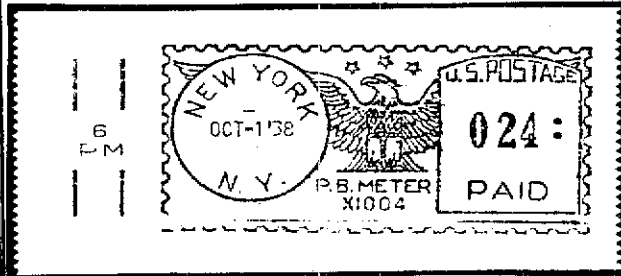
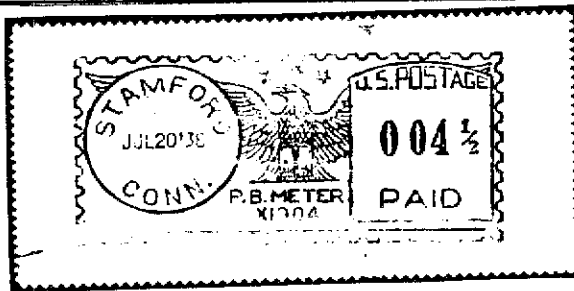


185

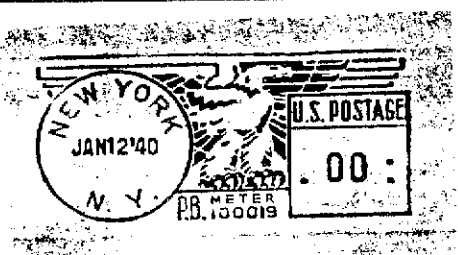


188

183



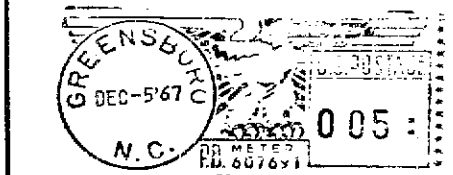
184



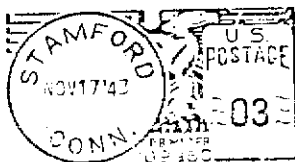
190



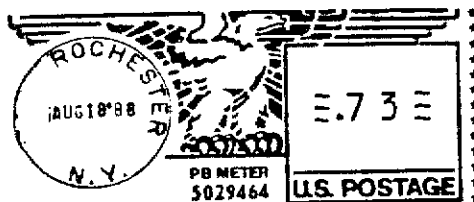
191



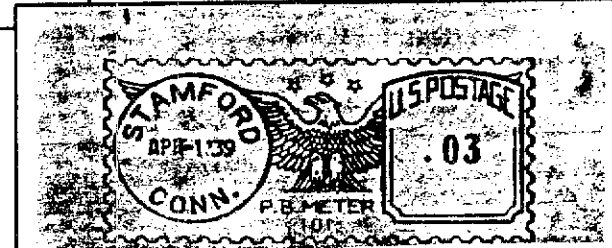
192



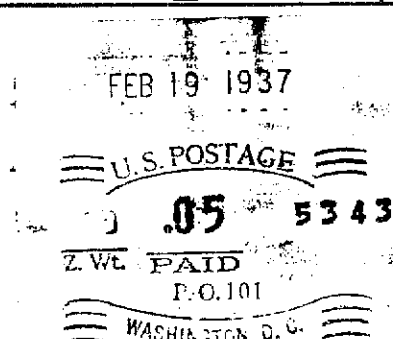
193



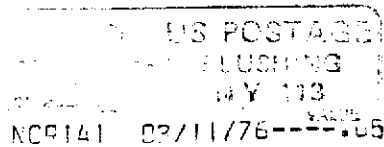
195



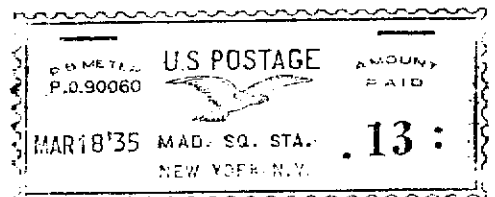
197



205

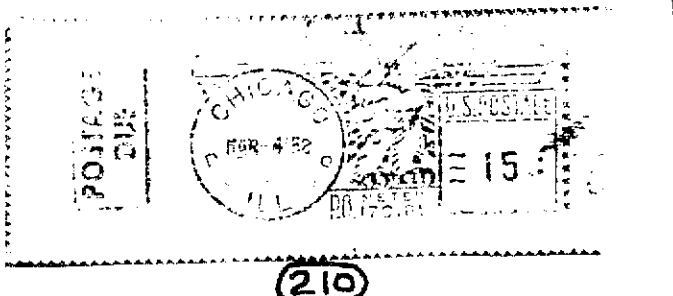


206

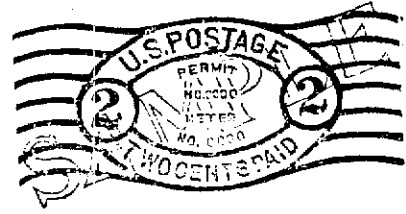


207

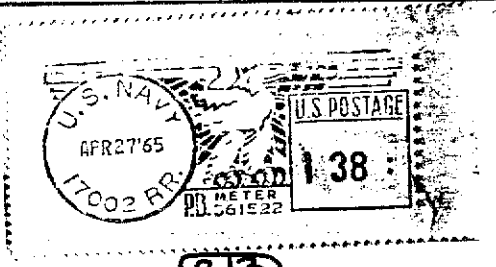
129.	DD2,	three 24c m5590 on tape (VR).....	10.50	
130.	DE1,	.05, .08 and .18 on tape (R).....	7.50	
131.	DE1,	.21 on tape (R).....	5.00	
132.	DE1,	.24 on tape (R).....	7.50	
133.	DE1,	.30 and .50 on tape (R).....	7.50	
134.	DE2,	.04-1/2, tape (VR).....	8.00	F
135.	DE2,	.18 on 2x3 piece w/o TM (VR).....	10.00	F
136.	DE2,	.02, .03 and .30 on tape (R).....	7.50	
137.	DE2,	.20, 1.00 and 2.00 m81510 on tape (VR).....	10.00	
138.	DE3,	.02-1/2, top strip (VR).....	12.50	F
139.	DE3,	.04-1/2, tape (VR).....	12.50	F
140.	DF2,	.18 m01430 w/o TM on registered manila cover (R).....	10.00	
141.	DF2,	.18 m01430, top strip (R).....	7.50	
142.	DF2-1,	.01 "ONE CENT ONLY" m01231, front (R).....	15.00	F
143.	DF2-2,	.02 + "AD'L 1c PD" m01467, top strip (VR).....	15.00	F
144.	DF3,	.15 red on manila top strip (R).....	6.50	
145.	DF3-2,	.02 + "AD'L 1c PD" m01726, cover (R).....	15.00	
146.	DF4,	.03-1/2, front (R).....	8.50	
147.	DF4,	.03-1/2, top strip (R).....	6.50	
148.	DF4,	.04, top strip (R).....	6.50	
149.	DF4,	4-1/2 m05274 on manila top strip (R).....	6.50	
150.	DF4,	.06-1/2 m05013, top strip (R).....	6.50	
151.	DF4,	.08, top strip (R).....	6.50	
152.	DF4,	.09 red, top strip (R).....	6.50	
153.	DF4,	.09 purple on manila top strip (R).....	6.50	
154.	DF4,	.12, top strip (R).....	6.50	
155.	DF4,	.15 airmail cover to Europe (R).....	7.50	
156.	DF4,	.23 red registered top strip w/o TM (R).....	10.00	F
157.	DF4,	.23 purple registered top strip w/o TM (R).....	10.00	
158.	DF4,	.24, top strip (R).....	10.00	
159.	DF4,	.29 black on registered cover (R).....	12.50	
160.	DF4,	.30 black on ragged registered cover w/o TM (R).....	5.00	
161.	DF4-3,	m05236 .02 with "AD'L 1c PD" below frank, two manila covers with diff. slogans (R).....	10.00	
162.	DF4-4,	m05131 .02 with "Ad'l 1c Pd" center of TM, cov (R).....	7.50	F
163.	DF4-4,	same as previous but m05183 (R).....	7.50	
164.	DF4-4 var.,	m05194 with "Ad'l 1c Pd" below date, blue on manila cover (R).....	10.00	F
165.	DF4-4a,	.02 with "Ad'l 1c Pd." inverted m05131 strip (VR).....	15.00	F
166.	DF5,	.09 on manila top strip (R).....	6.50	
167.	DF7,	.01 with "WORLD'S FAIR STA./FLUSHING N.Y." in TM, postcard.....	5.00	
168.	DF7,	.07 m38262, cut (VR).....	9.50	
169.	DF7,	.12, top strip (R).....	5.00	
170.	DF7,	.25 m57146 blue on manila strip with "FEDERAL RESERVE STA." in TM, weak impression.....	5.00	
171.	DF7-1,	.2-1/2 + 1/8c top strip, weak impression (R).....	6.50	
172.	DH1,	2c and 7c m6022 on tape (VR).....	10.00	F
173.	DB thru DH,	tightly packed carton of at least 1000 covers plus two envelopes filled with loose tapes. Several nice varieties and slogans noted. Some duplication (12 lbs).....	30.00	
174.	EA28,	two covers, one each with meter stamp for 1st and 2nd Int'l Metered Postage Exhib'n, 1957 and 1958.....	5.00	F
175.	EA,	five 1930s NCR covers to the Netherlands: one EA4, two EA8, two EA10.....	5.00	
176.	Accumulation of	200 tapes from EA22 thru EA30, heavy dup.....	10.00	
177.	FA2,	m90011, tape.....	15.00	F
178.	FA6 thru 9,	189 tapes, 120 diff. numbers including several very rare ones. This is an excellent flying eagle coll.....	95.00	
179.	FA6 thru 9,	75 diff. numbers on tapes/strips/cuts. No large cities included.....	75.00	
180.	FA6 thru 9,	70 diff. numbers on tapes/strips/cuts.....	15.00	
181.	FB2a,	"PERMIT 226" vertically up along left, cover.....	5.00	
182.	Accum. of	444 type FB cuts, some variety but much dup.....	5.00	
183.	FC1,	X1004 STAMFORD/CONN, Jul 20 '38 tape. Used only for a short time at Stamford (VR).....	35.00	F
184.	FC1a,	X1004 NEW YORK, Oct 1 '38 with hour slug, tape (VR).....	30.00	F
185.	FC3,	m100003, cover (VR).....	25.00	F
186.	FC4,	m100012 NEW YORK, Jan 9 '40 zero cent proof tape (VR).....	25.00	F
187.	GB1b,	"P-469" in bottom of TM, cover.....	3.00	
188.	GC4,	CC-6203, zero cent proof tape (VR).....	15.00	F
189.	57 type G	cuts, duplication.....	2.00	



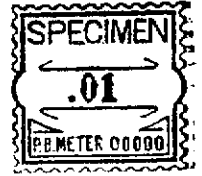
210



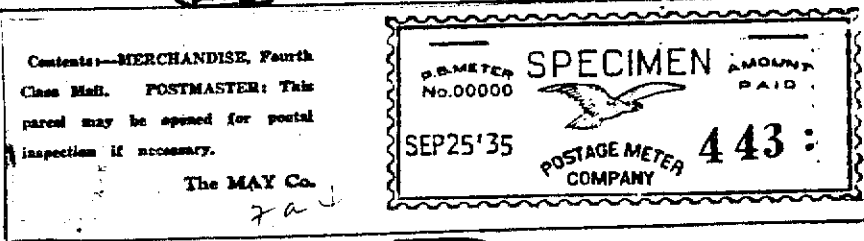
215



213



224



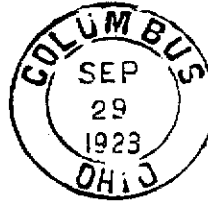
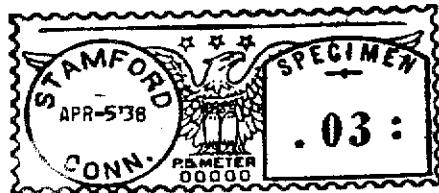
225



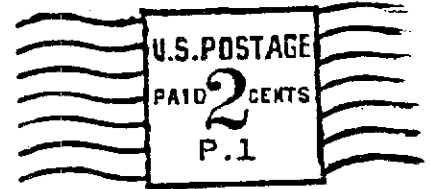
243



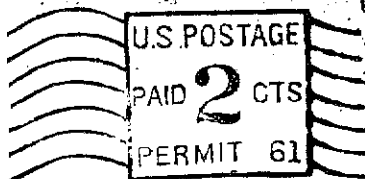
227



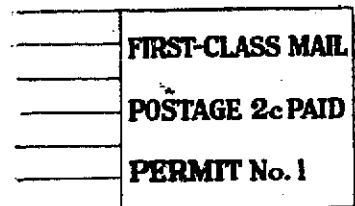
234



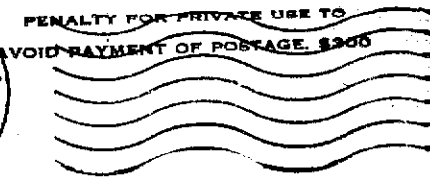
238



244



246

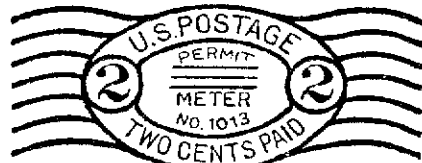


247

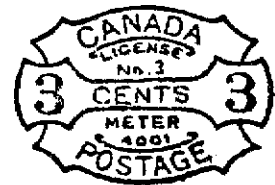
*Jimmy Carter*



249



257





190.	HA1, m100019, Jan 12'40 zero cent proof cover.....	15.00	P
191.	HA9, 13c CHICAGO, cover.....	7.50	P
192.	HA11, m607691 black Dec 5'67 on cover (R).....	25.00	P
193.	HB1, m109960, cover (R).....	15.00	P
194.	HB1, m109960, top strip (R).....	10.00	
195.	HF1, TM reads "(space) ROCHESTER/N.Y.", front.....	3.50	P
196.	1000+ type H cuts, some variety but much duplication.....	6.00	
197.	M(FC)2, m101 red STAMFORD Apr 1'39, cover.....	25.00	P
198.	M(FC)3, eleven all diff. covers/cards.....	20.00	
199.	M(FC)3a, eight all diff. covers/cards.....	15.00	
200.	M(HA)1, five diff. covers.....	5.00	
201.	M(HA)1a, 33 all diff. covers/cards.....	30.00	
202.	M(HA)1a, five diff. covers/cards, purple impressions (R)....	15.00	
203.	M(HA)2, seven diff. covers/cards.....	5.00	
204.	Mailomat coll. of 77 diff M(FC)3 thru M(HA)2, mostly covers/cards with some cuts, couple purple impressions....	45.00	
205.	P(EA)2, P.O.101 WASHINGTON, D.C. Feb 19'37 (R).....	25.00	P
206.	P(EB)1, NCR 141 unused tape (light print).....	2.00	P
207.	P(FA)1, P.O.90060 "MAD. SQ. STA./NEW YORK, N.Y.", tape.....	7.50	P
208.	P(FB)1+, tape on large piece.....	1.00	
209.	P(GA)2a (one tape) and 2c (two tapes, diff. towns).....	4.50	
210.	PD(D)1, CHICAGO 170165, tape (light impression).....	10.00	F
211.	Coll. of PD tapes in Lighthouse stock book. Types P(HA), P(HC) and P(KB) plus Postage Dues of same. Hundreds of tapes 1975-1988. Duplication.....	15.00	
212.	D(HC)1c, official meter 946480 with "US PS" in TM, FAYETTEVILLE/NC, tape.....	4.00	
213.	NV(3), "U.S. NAVY/17002 BR." tape.....	15.00	P
214.	Huge coll. of 25,000 2"x4" cuts including type C (12,000), type D (10,000), types F and H (1500 each). Many diff. colors/towns in approximate meter number sequence with very little duplication. This is a very large, very neat lot with many good items.....	225.00	

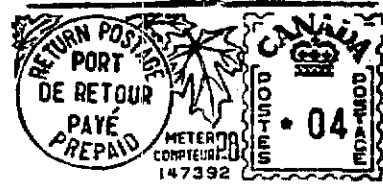
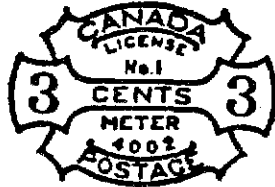
U.S. SPECIMEN Meters

215.	CD1 with SAMPLE diagonal and "1ct X PD" in TM, cover.....	12.50	P
216.	CD1 with SAMPLE diagonal, cover.....	5.00	
217.	DB1 with VOID diagonal, small cut.....	2.50	
218.	DD2, zero cent with SPECIMEN in TM, small cut.....	2.50	
219.	DE, SPECIMEN in frank, CITY/STATE in TM, green tape.....	3.00	
220.	DE, SPECIMEN in frank, LOS ANGELES/CALIF. in TM, red cut.....	3.50	
221.	DE, SPECIMEN in TM, red tape.....	3.50	
222.	DF, SPECIMEN in frank, SPECIMEN in TM, purple cut.....	3.00	
223.	DF, SPECIMEN in frank, NEW YORK/N.Y. in TM, purple cut.....	3.50	
224.	DF, set of six covers (.01 thru .06) with Michigan Stamp Club silver jubilee slogan, SPECIMEN in frank, green.....	15.00	F
225.	FA4, SPECIMEN at top, POSTAGE METER/COMPANY bot., sm. cut.....	6.50	F
226.	FB1, red, SPECIMEN above F/V, top strip.....	5.00	
227.	FB2, blue, SPECIMEN above F/V, cover.....	6.50	F
228.	GA1, red, SPECIMEN in frank, tape.....	4.00	
229.	GA2, red, SPECIMEN in frank, cover.....	6.50	
230.	GB, green, SPECIMEN in frank, no TM, Christmas slogan, tape....	3.50	
231.	HA2, red SPECIMEN/CITY/STATE, tape.....	3.50	
232.	HA3, purple SPECIMEN/CITY/STATE, tape.....	3.50	
233.	HB4, red SPECIMEN/CITY/STATE, tape.....	3.50	

U.S. Permits (Stambaugh cat. nos.)

234.	CA2, 2c COLUMBUS/OHIO P1, clear impression on cut (R).....	8.00	F
235.	CB3d, 2c NEW YORK/N.Y. P22, cover.....	3.00	
236.	CC4, 15c NEW YORK/N.Y. P96, purple on manila cut (R).....	3.50	
237.	CD2, 2c PORTLAND/OREGON P1, strip.....	3.00	
238.	CE2, 2c BOSTON/MASS P61, cover (R).....	5.00	F
239.	CE3, 2c HARTFORD/CONN P2, clean cover.....	3.00	
240.	CE4a, 2c SOUTHWINGTON/CONN P1, large TM, cover.....	2.00	
241.	CE4f, 3c NEW YORK CITY P564, front (R).....	3.50	
242.	DA1 and 2: DA1 3c MINEOLA/N.Y. P1 cut; DA2 NEW YORK/N.Y. P2241 cover.....	5.00	
243.	JA1, 3c ALLENTOWN/PA P1124, clear example on 3"x4" piece....	10.00	F
244.	PA1, WASHINGTON/D.C. P1, Aug 31 1920, extremely early usage by the very first First Class permit holder, Lansburgh & Bro., cover with tear not affecting indicium.....	40.00	F

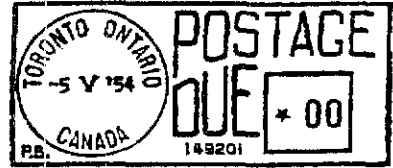
258



265

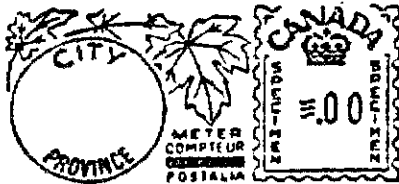


261

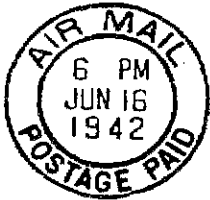


271

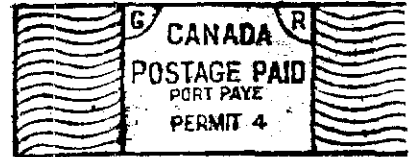
272



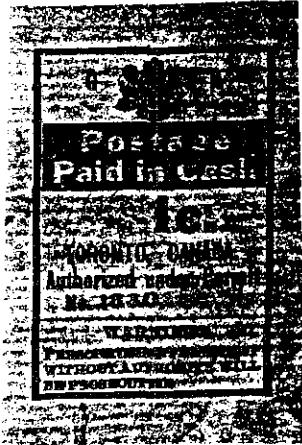
273



274



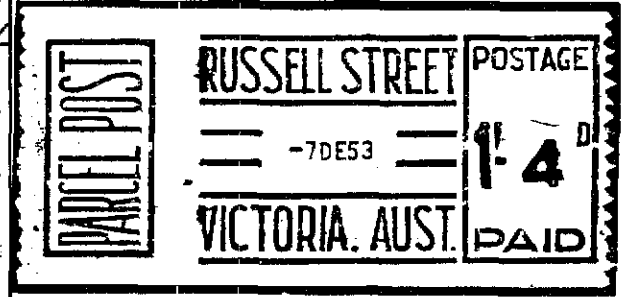
278



279



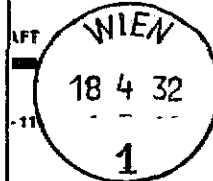
285



282



286



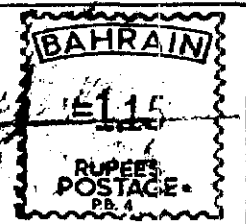
7059



287



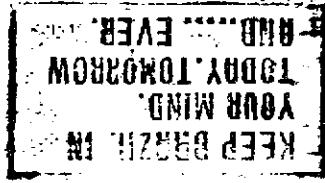
290



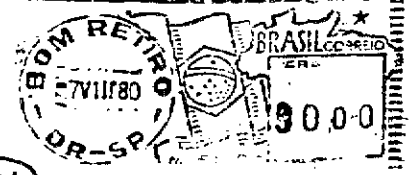
245. Business Reply Mail, 1000+ covers/cards from first type (RA1) thru modern. Heavy in earlier with plenty RA, RB, RC, air-mails, etc. Great starter coll. (10 lbs).....50.00
246. O-X2, early experimental Bureau of Mines official permit dated Feb 9, 1928 on manila cover (RRR).....15.00 F
247. O-HA6, Presidential Free Frank of Jimmy Carter, cut.....2.50 F
248. Three carton accumulation of covers/fronts mostly from 1920s thru 1950s (approx weight 75 lb).....30.00
- Misc. U.S.
249. MEISEL Meters, 40 postally used covers (36 diff. varieties, four dups.), very unusual.....50.00 F
250. MEISEL Meters, 20 strips/3 covers, all diff. varieties.....10.00
251. Oval and "D" type meters with station name in TM, 119 items (36 covers/fronts, 83 cuts), duplication.....10.00
252. Shoebox of misc. covers/tapes, mostly U.S. meters, some permits and foreign. Several interesting items (3 lbs)....5.00
253. Box of interesting odds and ends mounted on album pages. Some junkie but a few better items.....10.00
- U.S. Meter Literature
254. Meter Slogan Associates MONTHLY BULLETIN from Vol.1 No.1 thru Vol.6 No.5, complete less two issues. MSA is the forerunner to the Meter Stamp Society.....20.00
255. Steiger's POSTAGE METER CATALOGUE, 1st ed. 1931 plus 1932 addenda; lists all type BA and oval (type C) meters known up to then; a must for the specialist.....10.00
256. Misc. assortment of meter literature including 18 back issues of MSS BULLETIN, Pamperien's GENERAL METER NEWS-LETTER complete, four catalogs by Steiger and Swan.....10.00
- Canada Meters (Irwin cat. nos.)
257. 1.1, M4001 L3, 3c red cut.....25.00 F
258. 1.2, M4002 L1, 3c black proof cut.....20.00 F
259. 1.2, M4007 L1, 3c black proof cut.....20.00
260. 1.2, another.....20.00
261. 5.1, m40263 tape with two impressions of \$1 and one impression of 5c denomination.....5.00 F
262. 7.2, m84001 with 1940 Postage Stamp Centenary slogan, cov....2.50
263. 10.1 var C25, "C.A.P.O./5051", manila cover.....3.00
264. 10.1 var R1, "RETURN POSTAGE/PREPAID", (overcancelled) cov....2.00
265. 10.1 var R3, "RETURN POSTAGE/PREPAID/PORT/DE RETOUR/PAYE" unaddressed manila cover.....5.00 F
266. 10.4, Mailomat 51009, no slogan, post card.....10.00
267. 10.4, Mailomat 51010, "Buy WAR SAVINGS..." slogan, cover....12.50
268. 10.4, Mailomat 51010, no slogan, front.....7.50
269. 10.4, Mailomat 51010, no slogan, cut.....3.00
270. 14.1 and 19.3, two SPECIMEN tapes.....4.00
271. 15.1, POSTAGE DUE zero cent proof tape of meter 149201.....10.00 F
272. 17.1 S2, CITY/PROVINCE/SPECIMEN, red cut.....7.50 F
273. 19.1 S2, CITY/PROVINCE specimen, red cut.....10.00 F
274. 50.1 C, Airgraph with TM at left, unaddressed cover.....5.00 F
275. 91.1, BRITISH COLUMBIA LAW STAMP, 2 vars. of m149200.....3.00
276. Mounted coll. of mostly 2x6 strips incl. nos. 1.2 (6c), 5.1 (all vals from 1c to 7c, 10c, 20c), 7.4 (04000), 7.5 (04004), 10.3, 40.1 (two), 40.2 (two), 41 (eleven), several PD meters, several SPECIMENS, Mailomat cover, RCAF bases (six), 200 items in all.....50.00
277. Tapes, no.10 mostly, thousands with much duplication.....12.00
- Canada 'Postage Paid' Markings (Staeker cat. nos.)
278. B330-10 (two covers with Permit 5), B330-12 (one cover with Permit 4). Cat. val. \$75.....15.00 F
279. Nos. B6 (two), B8 (three), B40 (two), B46 (one), B56 (one), B400 (two) and B405 (four), fifteen covers.....10.00 F
280. Box of permits from recent years, many thousands.....15.00
- World Meters (Barefoot/Simon cat. nos. if applicable)
281. ADEN, three covers with diff. meter types: nos. 2 (U2), 4 (N12) and unlisted 1965 Universal (U3).....7.50
282. AUSTRALIA, Parcel Post tape from T.I.M. machine, tear does not affect fine appearance.....20.00 F



(293)

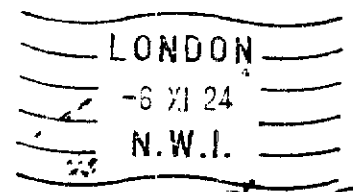


(296)



6190  
EESTI PANK  
TALLINN

(X300)



(304)



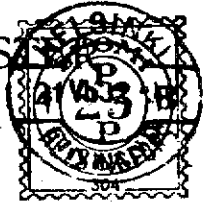
(X301)



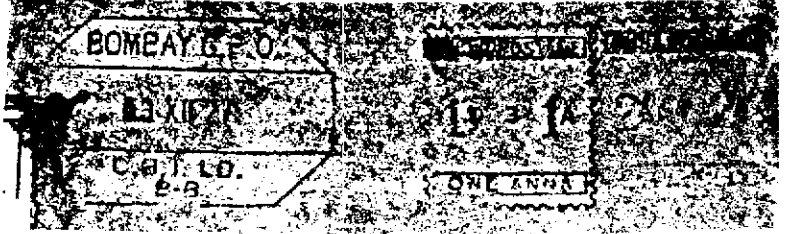
ÖMSIDIGA FÖRSÄKRINGSBOLAGET



(X302)



(X308)



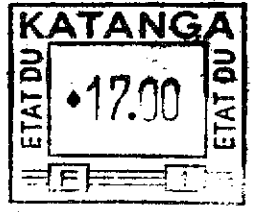
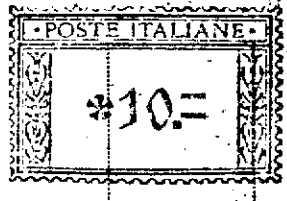
(X309)



5073  
IL TRENO  
DELLA  
RINASCITA

DOCUMENTA L'OPERA COMPIUTA  
PER LA RICOSTRUZIONE DEL PAESE

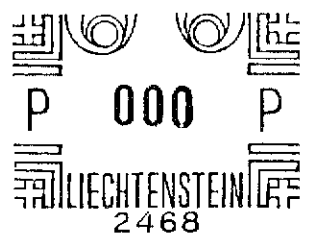
(311)



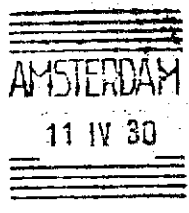
(X313)



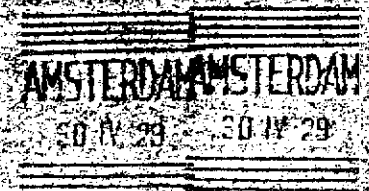
(X314)



(X315)



(X316)



(318)



283. AUSTRALIA, 13 Satas proof cuts with handstamped "Specimen"...5.00
284. AUSTRALIA, mounted coll. of 209 top strips/2x5 cuts from no.1 thru parcel post machines, some SPECIMENS included. Also 900+ unmounted covers with some fronts/cuts incl. types and specimens not found in mounted coll. (9 lbs)....65.00
285. AUSTRIA, no.1, meter 1, 3000 Kr, 2x6 cut (VR).....15.00 P
286. AUSTRIA, no.2, meter 104, 3000 Kr, 2x6 cut (VR).....15.00 P
287. AUSTRIA, four very nice covers, nos. 4, 5 (2 vars) and 6....10.00 P
288. AUSTRIA, 18 fronts all from diff. machines, late 1940s, six zero cent proofs, seven post-war altered dies, five new dies all diff. types.....20.00
289. AUSTRIA, quality mounted coll. of strips/cuts plus unmounted covers. Included are nos.4 thru 10, sixteen German occ., three post-occ. altered dies (nos.20, 23, 28), 51, 54-59, 61-66, 69-72, 76, 77, PD1-5 on full cover, PD7 and three other PD on cov. Many varieties and unlisted types.....60.00
290. BAHRAIN, PB.4 with demonstration slogan "YOUR ADVERT HERE" used commercially in error, front.....8.00 P
291. BAHRAIN, PB.4 with same slogan as above, but with REGISTERED handstamp over slogan area, cover.....5.00
292. BALTIC STATES: five cuts; ESTONIA no.1, machines 1 and 7 (both faint), LATVIA nos.4 and 9, LITHUANIA no.1.....15.00
293. BANGLADESH, eleven covers with altered Pakistan dies overstamped with Bangladesh characters.....25.00 P
294. BELGIUM, mounted coll. of top strips/cuts from no.2 thru PD machines, a PD and three RR parcel post documents. Several rarities and a Satas essay among them. Unmounted group of about 300 covers/fronts (some cuts), many which do not duplicate items in mounted coll. (5 lbs).....70.00
295. BRAZIL, nos. 38 and 69, cover and postcard with TM vars.....5.00
296. BRAZIL, Pitney Bowes tape with inverted slogan; normal copy included.....4.00 P
297. BRAZIL, same as previous but tape has repaired tear.....2.00
298. BRAZIL, album of all diff. mostly top strips/2x6 cuts nicely written up, plus box of over 1200 mostly covers/fronts. Many early items and some SPECIMENS included (12 lbs).....65.00
299. DANZIG, no.6, small cut.....3.00
300. ESTONIA, no.1, three covers from machines 4, 10 and 15 (4 somewhat ragged, 10 and 15 very nice).....25.00 P
301. FINLAND, no.1: two top strips from mach. 16 (50p/5m/10m), no.2: front and strip from mach. 202 (1-1/4m/1-1/2m).....20.00 P
302. FINLAND, no.3: three covers with three of the five machines used (303: 1-1/2M, 304: 25p and 1M, 305: 2M).....20.00 P
303. GERMANY, three carton coll./accum. of meters and 'Postage Paid' markings incl. several rare and better items and a few SPECIMENS. The coll. is in two parts: a) 188 meters of Ger./Berlin/E.Ger., all diff. cat. nos. or varieties mounted and written up on album pages. b) Approx 3000 covers/fronts in boxes, and 330 cuts/covers mounted but not written up on pages. Also Durst-Glasewald catalog and photocopy of unpublished draft update to German section of B/S cat. (32 lbs).....125.00
304. GREAT BRITAIN, no.16, machine 2: 1/2d, nice example on 1924 cover.....10.00 P
305. GREAT BRITAIN, no.30, machine N8: 1-1/2d, cover.....6.00
306. GREAT BRITAIN, 370 all diff. types/vars. mounted and written up in album plus 300 unmounted mostly covers from no.1 to modern. This is a great coll. containing 31 first types from no.1 (FD proof) to no.29. There are 31 SPECIMENS plus a dozen R/VR items and several modern unlisted scarcities. Also Mann's METER STAMPS OF BG & IRELAND (1972). This is a well developed coll. that could be put into exhibitable shape (8 lbs).....150.00
307. GUERNSEY (3 covers), JERSEY (2 covers), ISLE OF MAN (3 covers) all diff. meter nos., five diff. types.....5.00
308. HUNGARY, four covers, no.1 (M4: 20f, M6: 40f), no.10 (Fr.V.4: zero cent proof), no.12 (Fr.520 6).....10.00 P
309. INDIA, no.3, meter no.3, two covers: 1A + 2A on one, 2A on other.....10.00 P

AMSTERDAM  
17 XII 27

(319)

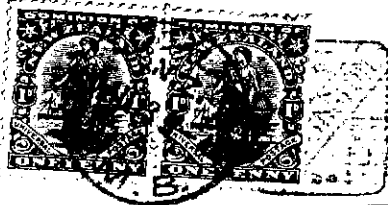
15 CENT  
12  
NETHERLAND

AMSTERDAM  
19  
NETHERLAND

(X325)

0010  
日本郵政 NIPPON  
SHIBUYA  
13.10.83  
通用当日郵便

(X312)



(327)



POSTAGE PAID  
N.Z.  
SIX PENCE  
ROCKLAND  
N.Z.

(330)

BRUCKEN  
ST. JOHANNI  
8. 8.

5975

STRASSEN  
FÜR JEDEN  
BEDARF  
PASSAGE KAUFHAUS A.G.

SAARGEBIET  
060

(X336)

SEC. 562 P.L. & R.

RECIFE  
22 V '47  
Pe

BRASIL CORREIO  
1415  
M 5238

(X340)

AMSTERDAM  
LAND V. DRUIVEN  
13. XI. 29. 18  
TOMATEN  
BLOEMEN  
WESTLAND

NEDERLAND  
7 1/2 CENT

(344)

PAR AVION  
BY AIR MAIL - LUFTPOST  
HELVETIA  
P 0040 P  
30-9.76-10  
HELVETIA  
P 0040 P  
A4  
0010  
BRASCHOW  
31-3.76-10  
A2  
Mr. Werner Kappeler,  
666 West Sanga Drive,  
Memphis TN 38117  
USA

(347)

20 12 57  
HAIFA



200  
INT. 10.11.11

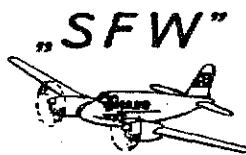
(X310) (SLIGHTLY REDUCED)

GOOD YEAR  
GOOD YEAR AIRCRAFT CORPORATION  
TEAMING TO KEEP AMERICA  
FIRST IN THE AIR

(350)

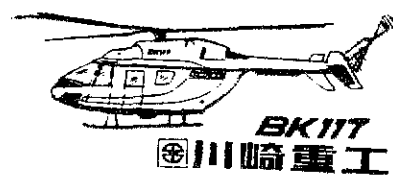
HALLE (SAALE)  
-3 5 39  
2

(X353)



"SFW"  
Siebel Flugzeugwerke Halle  
Halle (Saale) 2 Schließfach 189-70

004  
Deutsches Reich



(X351)

aerospatiale  
Concorde



20.1.81

37.82 DE NONTMORENCY-PARIS 161  
75-PARIS-53

REPUBLIQUE  
FRANCAISE  
\*350  
POSTES  
6 0409

AMERICANISM  
IS YOUR BIRTHRIGHT  
PROTECT IT!

(X354)

310. ISRAEL & PALESTINE, mounted coll. of top strips/2x6 cuts (ten Palestine/65 Israel). Many nice items incl. Palestine no.1 (R) and 3 values of no.9 (VR), most types of Israel incl. scarce Francotyp and Haslers, plus PD, mobile POs and registered items. Unmounted group of covers/fronts/cuts with fourteen Palestine and 66 Israel. Copy of ISRAEL METER POSTAGE STAMPS 1988 CATALOG by Foa (3 lbs).....75.00 P
311. ITALY, postcard with train meter for travelling exhibit.....10.00 P
312. JAPAN, two tapes, one is automat machine label.....3.00 P
313. KATANGA, four items: meter F1, cut (good impression) & cover (poor); meter U25, cut & front (both good).....18.00 P
314. LIECHTENSTEIN, 17 diff. meters, mostly covers. Included are four proof impressions.....30.00 P
315. LITHUANIA, no.1 cut (R), no.9 large piece, no.12 front.....15.00 P
316. NETHERLANDS, no.1, three covers with meter no.1 (6c, 7-1/2c and 10c).....20.00 P
317. NETHERLANDS, no.1, meter no.2 (7-1/2c) on cover.....5.00
318. NETHERLANDS, no.1, meter no.12 with two impressions of 2-1/2c, nice blue cover (R).....20.00 P
319. NETHERLANDS, no.1, meter no.12 with excellent clear example of 15c on cover.....10.00 P
320. NETHERLANDS, no.1, five covers with diff. meter nos: 1 (7-1/2c), 2 (2c), 6 (10c), 9 (2c), 10 (2c).....30.00
321. NETHERLANDS, no.2, meter no.6 (3c) front; meter no.6 (7-1/2c) and meter no.7 (7-1/2c), both covers.....10.00
322. NETHERLANDS, no.2, five covers with diff. meter nos: 6 (6c), 7 (10c), 8 (7-1/2c), 9 (2c), 19 (10c).....20.00
323. NETHERLANDS & COLONIES, over 800 covers/fronts plus mounted coll. of 170 mostly 2x6 cuts/strips. Starts with two examples of no.1, three of no.2 thru modern (13 lbs).....50.00
324. NEWFOUNDLAND, no.4, 5 cent w/o TM, meter number faint but looks like 20, cover.....5.00
325. NEW ZEALAND, no.7, Auckland 49, 1/2d and 1d on separate small pieces.....10.00 P
326. NEW ZEALAND, no.7, Wellington 27, two impressions of unreadable value (cancel over denom.) plus pair of 2-1/2d adhesive (Scott 111) on 1911 cover to Phila.....15.00
327. NEW ZEALAND, no.14, Wellington 53, two impressions of 1d plus pair of 1d adhesive (Scott 131) on 1913 cover.....25.00 P
328. NEW ZEALAND, no.18, Wellington 194, 1d on fancy illustrated front.....10.00
329. NEW ZEALAND, no.19, Auckland 223, 1d and 3d on cover.....15.00
330. NEW ZEALAND, no.19, Auckland 22, 6d and 1/ on blue front....35.00 P
331. NEW ZEALAND, nos.18 and 19, 41 cuts/fronts/covers, nice variety of machines. No.18: 1d (11 machines, 1 dupl), no.19: 1/2d, 1d and 1-1/2d (23 machines, 6 dupl).....20.00
332. NEW ZEALAND, official no.D31, 1d "PUB.TRUST.LOC.DEPT - CHCH" small cut.....8.00
333. NEW ZEALAND, carton of mostly cov. from no.18 thru modern. Many types/varieties present. Over 1000 items (7 lbs)....20.00
334. PHILIPPINES, no.6 m94501, top strip.....2.00
335. POLAND, no.2 "C.11.", 1931 registered cover to New York with two 5 Gr and two 1 Zt impressions.....5.00
336. SAAR, eight covers: no.3 (three covers, two diff. users), nos. 14, 15, 20, 23, 32 (one cover each).....40.00 P
337. SOUTH AFRICA, twelve unaddressed proof covers of no.4.....5.00
338. SOUTH AFRICA/SW AFRICA, mounted coll. of 98 mostly 2x6 cuts from no.1 thru modern includes several SPECIMENS and proofs. Envelope full of NCR and other parcel post labels. Also 400+ covers/fronts (4 lbs).....50.00
339. SWITZERLAND, official meter on cover.....1.00

World Specimens

340. BRAZIL, set of five diff. Pitney Bowes proof tapes, all with U.S. PL&R section numbers up at left.....10.00 P
341. Five specimens on card or sample envelope: three from GREAT BRITAIN, one each from COLOMBIA and TURKEY.....10.00



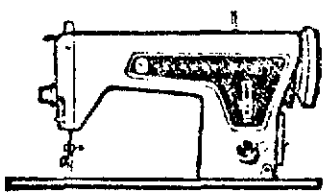


Misc. World

- 342. Three carton accumulation of many thousands of world meters (no U.S.) -- great variety, some dup. -- a nice start to a world collection (approx. weight 60 lbs).....120.00
- 343. The earliest 'Postage Paid' marking in use in the Netherlands, black 5 CENT impression w/o TM on front. Mailed by the first user! Overcancelled 14.IX.1929.....7.00
- 344. As previous, black 7-1/2 CENT on cover, cancelled 13.XI.29...7.00 P
- 345. Nice variety of Dutch 'Postage Paid' markings on thirteen covers dated from 1930 to 1947.....10.00
- 346. Accumulation of several hundred 'Postage Paid' markings on cover or piece, mostly GB and Germany but other countries as well. Unusual, unresearched material (3 lbs).....15.00
- ATM (Frama) Labels
- 347. SWITZERLAND A1, A2, A3 and A4 on one cover dated 8/30/76...150.00 P
- 348. "ATM -Automatenmarken - POCKETKATALOG 1989", most recent 88 page catalog in German with English introduction.....6.50

Slogans and Topicals

- 349. AIRCRAFT: BALLOON slogan on tape.....2.00
- 350. AIRCRAFT: GOODYEAR BLIMP on cover.....7.00 P
- 351. AIRCRAFT: HELICOPTERS, 5 diff (3 cov/2 fronts).....5.00 P
- 352. AIRCRAFT: MILITARY, 9 diff (4 cov/2 fronts/3 cuts).....2.50
- 353. AIRCRAFT: CIVILIAN, 69 diff (45 cov/8 fronts/16 cuts).....17.50 P
- 354. AMERICAN PATRIOTISM, 18 diff (13 cov/3 fronts/2 tapes).....4.00 P
- 355. AMERICAN FLAG, 5 diff (3 cov/2 tapes).....2.00
- 356. ANIMALS: BIRDS, 17 diff. (11 cov/ 1 front/ 5 cuts).....4.50 P
- 357. ANIMALS: BIRDS OF PREY, 10 diff. (7 cov/ 3 fronts).....3.50 P
- 358. ANIMALS: CATS, 3 diff. (1 cov/ 2 strips).....1.00
- 359. ANIMALS: DINOSAURS, 3 diff covers.....2.00
- 360. ANIMALS: DOGS, 4 diff. (2 cov/ 2 cuts).....1.00
- 361. ANIMALS: ELEPHANTS, 5 diff. (3 cov/2 cuts).....2.00
- 362. ANIMALS: HORSES, 11 covers with 9 diff. slogans.....4.00 P
- 363. ANIMALS: INSECTS, 5 diff. (1 cov/4 fronts).....2.50 P
- 364. ANIMALS: MAMMALS, 15 diff. (8 cov/1 front/6 cuts).....3.50
- 365. ANIMALS: MARSUPIALS, 3 diff (1 cov/2 cuts).....1.00
- 366. ANIMALS: MYTHICAL, 12 diff. (7 cov/1 front/4 cuts).....3.50 P
- 367. ANIMALS: PENGUINS, 4 diff covers.....1.50
- 368. ANIMALS: WHALE, one cover.....1.00
- 369. ARCHITECTURE (buildings), 33 diff (19 cov/3 fronts/11 cuts).....7.00 P
- 370. BEER Ad slogans, 13 diff covers.....4.00 P
- 371. BRIDGES, 11 diff (5 cov/3 fronts/3 cuts) includes one covered bridge.....3.00
- 372. BUSES, 6 diff (3 cov/1 front/2 cuts).....3.00 P
- 373. CAMERAS, 7 diff (4 cov/1 strip/2 tapes).....3.00 P
- 374. CHRISTIANITY, 14 diff (10 cov/4 fronts).....4.00
- 375. COCA COLA ad from 1955 on cover.....2.50 P
- 376. COFFEE Ads, 5 diff (3 cov/2 cuts).....2.00
- 377. COMPUTER HISTORY, "Remington Rand/UNIVAC" slogan from 1962, cut.....5.00 P
- 378. CONSERVATION, 6 diff (5 cov/ 1 strip).....2.00 P
- 379. DEPARTMENT STORE Ad s, 27 diff (24 cov/2 fronts/2 cuts).....3.50
- 380. THOMAS A. EDISON centennial cover, 1947.....2.00 P
- 381. ENERGY (gas/coal/oil/electric), 28 diff (17 cov/3 fronts/ 8 cuts).....7.00 P
- 382. ENGINES & MACHINERY, 16 diff covers.....4.00 P
- 383. FLOWERS, 5 diff (2 cov/3 cuts).....2.00
- 384. FOOD & KITCHEN APPLIANCES, 33 diff (21 cov,3 fronts/9 cuts).....7.50 P
- 385. BEN FRANKLIN, one front.....2.00 P
- 386. GASOLINE CO. Ads, 28 diff (5 cov/20 fronts/3 cuts).....4.00
- 387. HEAVY EQUIPMENT, 9 diff. (6 cov/2 fronts/1 cut).....2.50 P
- 388. HOUSEHOLD GOODS, 28 diff (23 cov/5 cuts).....6.50 P
- 389. INDIANS, 4 diff (3 cov/1 cut).....3.50 P
- 390. ABRAHAM LINCOLN, one front.....4.00 P
- 391. LIONS INTERNATIONAL, 8 diff (1 cov/ 7 cuts) includes slogans for Int'l conventions for 1962, 63, 64 and 65.....3.00
- 392. LIQUOR Ad slogans, 17 diff (13 cov/2 fronts/2 cuts).....4.00 P
- 393. MAPS: COUNTRIES/CONTINENTS, 32 diff (20 cov/4 fronts/ 8 cuts).....3.50
- 394. MAPS: U.S. STATES, 29 states, 49 diff slogans (28 cov/ 8 fronts/13 cuts).....10.00



X388



X389



Visit ILLINOIS THE LINCOLN COUNTRY

390

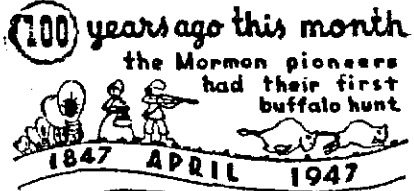


X395

POSTALIA

WHITE CAP special Blend 43% WHISKY 43%

X392



X396

NATO 1949-1957



8th Anniversary

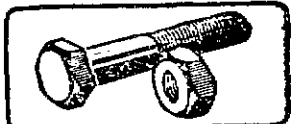
SHAPE

AIRDEFENSE TECHNICAL CENTER

P.O. BOX 174 \* THE HAGUE NETHERLANDS

X398

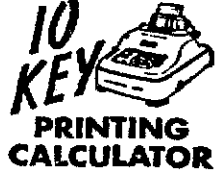
BORSTLAP & ZN



L.v. MEERDERVOORT #320

X400

SPEEDY-ACCURATE



X401



Stadterwaltung M. Gladbach (22a) (Mönchengladbach) Textil-, Bekleidungs- und Maschinenindustrie NATO-Hauptquartier Mitte-Nord



Dr. Otto Schneider, Mehringdamm 66, Berlin SW 6, Am. Zone

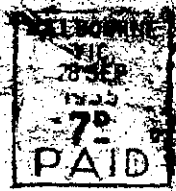
163 \*



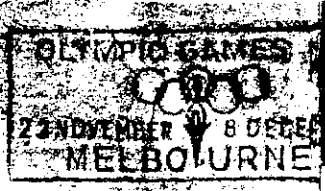
X402

WINGS Cigarettes 10¢

X423



412



N.S.D.A.P.

Gauleitung Bayerische Ostmark Bayreuth

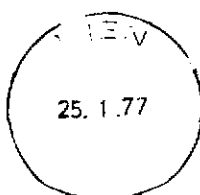


X399

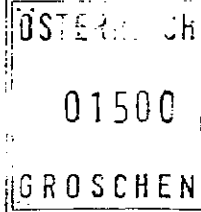
ACOUSTICS

A-1150 Wien Inholdengasse 1

izieller Ausstatter Official Supplier



X408



München 1972

AIR MAIL Printed Matter Drucksache



409

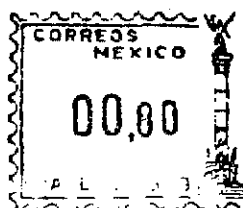


COMITE ORGANIZADOR

MEXICO 1968



410



AHORRE TIEMPO ENVIANDO SUS CARTAS POR CORREO AEREO



416

