

U.S.

asterisk (*) means lot is illustrated

1.	BA1,	2c red, M1 P1 on small cut with slight tear above TM.....	12.50	*
2.	BA1,	2c red, M4 P6 on toned cover.....	10.00	*
3.	BA1,	2c red, M4 P6 on large toned piece.....	5.00	
4.	BA1,	2c red, M1012 P7 on toned cover.....	8.00	*
5.	BA1,	1c green, M1013 P10, cut.....	8.00	*
6.	BA1,	2c red, M1014 P1, cut.....	8.00	*
7.	BA1,	2c red, M1015 P9, small cut.....	6.50	
8.	BA1,	2c red, M102B P19 on large piece.....	5.00	
9.	CA1,	10c light yellow (VR), used by Postage Meter Co., front.....	20.00	
10.	CA1,	12c red, M1444 on registered cover (R).....	5.00	
11.	CA1-1,	1c brown, M1639 with "EXTRA 1/2c PAID" in center of TM, cover....	5.00	
12.	CA1-2,	1c blue, M2391 with "ONE CENT ONLY" (error) in TM, strip.....	3.50	
13.	CA2,	12c red, M2018, cut (VR).....	8.00	*
14.	CA2-2,	1c purple, M1624 with "ONE CENT ONLY" in TM (error), cut.....	2.50	
15.	CA3,	4-1/2c purple, M5119, cut.....	4.50	
16.	CA3,	17c red, M5425 on registered cover (R).....	7.50	*
17.	CA3,	17c red, M5425 on registered cover, no TM (R).....	5.00	
18.	CA3,	18c red, M7853 with 3c adhesive stamp, cut (R).....	5.00	
19.	CA3b,	5c red, M5660 with "VIA AIR MAIL" above indicia (R). First flight cover.....	15.00	*
20.	CA4,	1-1/2c red, M6083 with "SEC 562 P.L.&R." inverted above indicia, front.....	5.00	*
21.	CA4,	4-1/2c red, M5119 on large piece.....	7.50	*
22.	CA4,	8c red, M5291, strip.....	6.00	
23.	CA4,	9c red, M1867, cut.....	8.00	*
24.	CA4,	18c red, M8832 on large piece.....	7.50	*
25.	CA4,	21c red, M8728 on large piece (R).....	5.00	



26.	CA4,	23c purple, M8621 on registered cover, no TM. S/W says "said to exist". One of the premier meter rarities (RRR+).....	150.00	*
27.	CA4-1,	5c+1c red, M7868 on cover with tear touching corner of stamp (VR).....	10.00	*
28.	CA4-1,	17c+1c blue, M5661, cut (R).....	15.00	*
29.	CB1,	4c brown, M1360, Mail-o-Meter, front.....	22.50	*
30.	CB1-1,	1c brown, M1049 with "EXTRA 1/2c PAID" in TM, cover.....	7.50	*
31.	CD2,	1c purple, M1100, International, front.....	5.00	
32.	CD2-1,	1c+1c red, M1100, unlisted combination and number, probably a proof cover (RRR).....	5.00	*
33.	CE1,	2c red, M179, Whitlock, front.....	5.00	
34.	CF3,	2c red, M519, Continental, strip (R).....	15.00	*
35.	CF4,	1c green, M10020 on somewhat ragged cover (VR).....	8.00	*
36.	CF4,	2c red, M10006 on small cut (R).....	2.00	
37.	CF4,	2c red, M10014 on cover (R).....	5.00	
38.	CF4,	3c red, M10031, strip (R).....	10.00	*
39.	CH3,	1c purple, M875, U.S. Postal Meter, strip (R).....	5.00	
40.	CH3,	1c purple, M881, strip (R).....	5.00	
41.	CH3,	2c red, M554, cut.....	3.50	
42.	CH5,	1c purple, M604, strip.....	3.50	
43.	CH5,	1c blue, M677, cut.....	3.50	
44.	CH5,	1c purple, M899, strip.....	3.50	
45.	CH5,	2c red, M707, strip.....	3.50	
46.	CH5-1,	2c purple, M555 with "ADL 1c PD" below meter number, cut.....	5.00	
47.	CH6,	1-1/2c red, M530, strip.....	3.00	
48.	CJ1,	3c purple, M3, Multipost, cover (R).....	5.00	
49.	CJ1,	3c purple, M3, strip (R).....	4.00	
50.	CK1-1,	2c blue, M9221 with "ADL 1c PD." below indicia, strip (VR).....	10.00	*
51.	DB1A,	11c + 2c on tape on piece, M15100 (VR).....	7.00	*
52.	DB1A,	17c + 3c + 3c on cover, M10819.....	3.50	
53.	DB4,	2c M9000 w/ slogan "X ADHESIVE STAMPS ARE OUT OF DATE", front (VR).....	15.00	*
54.	Same	as above but slogan "YOU SEE MORE AND MORE METERED MAIL", front (VR).....	15.00	*

55.	DR9-1, 2c with "AD'L 1c PD" above indicia, M50132, strip.....	5.00	
56.	DC1, 6c on nice cover, M802 (VR).....	10.00	*
57.	DC9, 15c, M5442, cover.....	7.50	*
58.	DF2, 18c red, M01430 on registered cover, no TM (R).....	5.00	
59.	DF2, 18c blue, M01430 on strip (R).....	3.00	
60.	DF2-1, 1c blue with "ONE CENT ONLY" center of TM, M01231, cover (R).....	8.00	*
61.	DF4, .09c, M05275, strip (R).....	10.00	*
62.	DF4, .24c, M05198, strip (R).....	10.00	*
63.	DF4-3, .02c with "AD'L 1c PD." below indicia, M05236, strip (R).....	10.00	*
64.	DF4-4, .02c with "AD'L 1c PD" center of TM, M05131, strip.....	5.00	
65.	DF74, town/state at top of TM, bottom blank, .02c unlisted denomination for this variety, #59123, cut.....	1.00	
66.	DH1, two tape strips: M6022 with 7c + 7c (VR) and M6008 with 2c + 2c + 6c + 24c (VR).....	10.00	*
67.	DH1, 12c, M6053, strip (R).....	5.00	
68.	DH1, 26c, M6171, strip (VR).....	7.50	*
69.	EA4a, #1063, permit 11, tape.....	1.50	
70.	EA5, #1029 on cover.....	1.00	
71.	EA8b, #1155, permit 3.....	1.50	
72.	EA11, #2199 on cover.....	1.00	
73.	EA11 & EA17, both types on same meter (#2338), two tapes.....	2.00	
74.	EA13, #1117, two tapes with different townmarks.....	3.00	
75.	EA14, #1315, air mail cover.....	1.00	
76.	EA14c, #1117, tape.....	1.50	
77.	EA15, #1260, air mail cover.....	1.00	
78.	EA16, #1215, registered front.....	1.00	
79.	EA16, #1653, registered cover.....	1.00	
80.	EA17, #1660, registered cover.....	1.00	
81.	EA19, #1083, tape.....	1.50	
82.	NCR accumulation from type EA4 to EA30, 185 items: 135 covers/large pieces plus 50 tapes. Many varieties, some registered covers.....	40.00	
83.	FA2, M90011 on registered front.....	20.00	*
84.	FA2, M90011 on registered tape.....	10.00	
85.	FA9d, #90787, permit 100, tape.....	10.00	*
86.	Flying eagle (type FA) tape #90512 - very rare number.....	25.00	*
87.	Flying eagle (type FA) tape collection containing 188 tapes (117 different numbers) including some very rare ones like 90143, 90301(NY), 90516(Cincinnati), 90609 and 90698(Cincinnati). Other rare numbers also included. Among these tapes are some elusive varieties such as FA6b, FA7a, FA8b and FA9a,b,d.....	100.00	
88.	75 individual Flying Eagle towns from 33 states, no duplicates. Tapes, strips, cuts; an outstanding group.....	75.00	
89.	FA6, 7, 8, 9 - ten flying eagle tapes plus 3 cuts incl FA7a, 8a, 9a.....	4.00	
90.	FC1a, #1004, blue tape.....	30.00	*
91.	FC3, #100003, cover (VR).....	20.00	*
92.	FC3, #100006, cover (VR).....	20.00	*
93.	FC4, #100012, front (VR).....	15.00	*
94.	FC4, #100013, cut (VR).....	17.50	*
95.	GA3, NPM 6036, 0.03, cut (R).....	12.50	*
96.	GB1a, #9260, with "Keep 'em flying" slogan, face.....	2.00	
97.	GC5, CC-51978, 0.04c on air mail post card. Experimental used for 5 or 6 weeks only. Seldom seen (VR).....	27.50	*
98.	HA1, #100019, red, cover.....	7.50	
99.	HA2, 3 different numbers (100172, 457, 469) on #10 covers with slogans....	3.00	
100.	HA4Aa, user's initials (DC) at sides of TM, #143761, tape (R).....	7.50	*
101.	HA5, experimental #341038, .08c tape (R) appears to have been obliterated with pencil and subsequently erased with only moderate success.....	10.00	*
102.	HA9, 15c, SOMERDALE/N.J., cover.....	7.50	*
103.	HA11, #607691, 0.05c black, strip (R).....	7.50	*
104.	HB1, experimental #109960, small cover (R).....	15.00	*
105.	Same as previous but large cover.....	15.00	
106.	KA1, #010104, tape.....	10.00	*
MAILOMATS			
107.	M(F), experimental Mailomat #100, 02c red, cover (VR).....	20.00	*
108.	M(F), pre-first day unaddressed proof cover dated SEP 30 '36.....	22.50	*
109.	M(FC)1, #101, first day cover (VR).....	25.00	*
110.	M(FC)2, #51001, .02c red without "PD", cover (VR).....	15.00	*
111.	Same as previous, .03c cover.....	15.00	
112.	M(FC)2 and 2a, #101 and both varieties of 51001, 2 on piece, 1 on front....	20.00	
113.	M(FC)3, #51003, .01-1/2c cover.....	3.50	
114.	M(FC)3, #51003, .18c air mail special delivery strip.....	3.50	

115.	M(FC)3, #51003, .21-1/2c plus 1-1/2c adhesive stamp, reg. large piece.....	5.00
116.	M(FC)4, #51002 with Macy's slogan on cover.....	5.00
117.	M(HB), #52000 with slogan "BUY US WAR BONDS", cover (VF).....	20.00 *
118.	Another as previous.....	20.00
119.	Mailomat collection of 111 different cuts and covers includes M(FC)2, M(FC)4, M(HB) and others.....	40.00

POST OFFICE METERS

120.	P(FA)1, P(90062 WASHINGTON DC, 2 tapes on one large piece with special delivery stamp also affixed.....	10.00
121.	P(GA)2a, two tapes (6372, 6927) on large pieces, and P(GA)3 tape (6176)...	6.00
122.	P(GA)2b, 2c, five different favor proof tapes.....	10.00
123.	150 PD and PD tapes from P(FA)1 (90060), P(FB), P(GA)2 to PD(E)4. Virtually all different town/type combinations.....	15.00
124.	P(HA)1 to P(FC), 340+ items; 42 covers or large pieces plus approx. 700 tapes, many with "POST OFFICE" spelled out.....	20.00
125.	Friden-Airtel experimental PD meters, set of all 5 town uses, 2 tapes 3 fronts.....	10.00 *
126.	P(ED)2, experimental PD meter #92745, tape.....	8.00 *
127.	PD(E)1, 1a, 1b, PD(E)4, plus one w/o "PD". Nine covers and large pieces and 20 tapes.....	5.00
128.	Q(HC)2a with small wavy lines in F/V, SAN BERNARDINO/CALIF., cut.....	4.00 *
129.	Q(HE)1 with US/PS in TM, FORT GORDON/GA., tape.....	5.00
130.	Q(HE)1 without townmark circle, printed over penalty indicia on cover.....	8.00 *
131.	Q(LA)1a, cover with small townmark circle.....	2.00
132.	AP2b, light print on #10 first class cover.....	2.00

SPECIMENS

133.	Covers and tapes of type D, G, and H meters plus one type K. Six specimen covers and 22 tapes.....	25.00
134.	EA4, NCR tape, NEW YORK, NY, .40-1/2c.....	5.00 *
135.	EAB, Oakland, Calif, 9.99c.....	5.00
136.	FA7 with slogan, small cut.....	5.00
137.	FB2 with slogan, small cut.....	3.00
138.	FB2 on tape.....	5.00
139.	Type GB, three green specimen tapes without TM, each with different Christmas slogan.....	5.00
140.	Mounted collection of specimen tapes, 47 items in all, mostly NPM type GB but also many different P-B types including a flying eagle (FA)....	50.00

SLOGANS

141.	Over 200 covers and fronts selected for their slogans, most from the 1940s but some modern. Nice variety here.....	20.00
142.	Small lot of 28 covers and 14 cuts with interesting slogans.....	5.00
143.	Proof tapes. This is a collection of tapes that were given out with the Meter Slogan Associates Bulletins from 1938 to 1944. Most are zero cent with full gum in excellent condition. 203 tapes in all.....	40.00 *
144.	Set of 44 zero cent proof or favor tapes of type FB thru HA2, all with slogans.....	10.00
145.	8400 P-B type D and type H tapes with slogans. All are clean and are arranged in number sequence within city/state. There is some number duplication but no slogan duplication. This is an outstanding lot for the slogan collector.....	150.00
146.	2500 Commercial Controls type G and P-B large eagle (type FB) slogan tapes arranged as the previous lot. This is another excellent slogan lot for the right collector.....	50.00
147.	Slogan collection of covers/tapes/cuts organized by subject. There are 37 topics covered within this foot thick stack of topical meters..	50.00
148.	17 slogan tapes showing the "History of Glass". This is the complete set issued by a Toledo Ohio company from 1939 to 1941.....	10.00
149.	1936 Olympic slogan on type DE2 meter used by the German Railroad Information Office in New York. Two undated examples, one blue, one purple on large no. 10 size pieces.....	20.00 *
150.	Same slogan as above, but one purple example only.....	10.00
151.	Same slogan as above, two dated tapes (purple) on one large piece.....	15.00
152.	Same slogan as above, blue dated example on small cover, machine cancel over part of meter impression.....	5.00
153.	Astronaut slogan on type KB1 cacheted cover.....	3.00

TOWNS

154. 1125 all different towns on #10 covers, all in alphabetical order by state including some APOs and territories. This is a great starter town collection.....40.00
155. Four meter town spelling errors on cut or tape: BELTSVILLE/MD., BUTTLER/US/PS/NJ, MABELTON/US/PS/GA., LAURINGBURG/NC.....16.00

LARGE U.S. LOTS

The following six lots are from the collection of a long time meter collector. Most of the material consists of covers and fronts, and some of it is sorted by town although much of it is random. These are great lots for the collector who has the time to sort through them. Each lot description includes the approximate weight which should give you an idea of shipping charges that will be added to the winning bids.

156. Two carton accumulation of oval (type C) meters, a fine assortment of interesting covers, many nice ad covers. Approx. weight 40 lbs.....30.00
157. Huge accumulation of type D meters from type DB to DH. Approx. weight 80 lbs.....40.00
158. Accumulation of type F meters, a large number of both FA and FB types. FAs not checked for rare numbers. Approx. weight 30 lbs.....40.00
159. Huge accumulation of modern eagle (type H) meters from type HA1 to HE. Approx. weight 110 lbs.....30.00
160. Permits, 3 carton accumulation of permit mail mostly from the 1920s thru the 1950s, much of it sorted by city and number. Weight 75 lbs..30.00
161. Large box of Business Reply Mail, much material from the 1930s, 40s and 50s. Some earlier and some later. A great lot of infrequently seen material. Approx. weight 40 lbs.....20.00

CANADA (Numbers used are from Irwin and Legris catalogs)

162. 1.1, M4001 L3, 3c red, 8pm/NOV 7/1925, cut.....18.00 *
163. 1.2, 5 cent, M4065, House of Assembly, cut.....2.00
164. 1.2.9, 6c red, M4138, with inverted license "No. 6", large strip.....5.00
165. 7.1, #84013, .20c + .20c + .50c tape on large cover. Also tape on #84009, .09c.....10.00 *
166. 7.2, cover with slogan commemorating 1939 royal visit.....3.00
167. 7.4, #04003, two cuts, LONDON/ONT., one with slogan.....5.00
168. 7.5, M04007 & M04008, two cuts with slogans.....2.00
169. 8.2.15, .05c blue cover.....2.00
170. 9.1, #94000, tape.....7.50 *
171. Another as previous lot.....7.50
172. 10.1, postage due tape with P/D in TM and with boxed "POSTAGE DUE" left of TM.....10.00 *
173. 10.4, Mailomat #51009, OTTAWA/ONTARIO/PO, post card.....10.00 *
174. 10.4, Mailomat #51009, OTTAWA/ONTARIO/PO, cut.....3.00
175. 10.4, Mailomat #51010, OTTAWA/ONTARIO/PO, cover.....15.00 *
176. 10.4, another as previous.....15.00
177. 10.6, dot instead of star, TROIS RIVIERES, two tapes, one on white paper, one on yellow underprint paper.....5.00
178. 11.1, M143171, set of four international air mail covers showing 25c, 50c, 75c and \$1.00 rates.....2.00
179. 11.4.1 tape, 11.4.2 cover with fractional rate and green proof on cover..15.00 *
180. 11.6, cut and small cover with diff. slogans.....10.00
181. 13, Roneo-Neopost, two cuts, #108 2c + 3c and #119 2c.....5.00
182. 14.1.1, orange meter print on small cover with orange soda corner card..2.00
183. 18.1, two tapes with TM: AEROPORT MIRABEL AIRPT/PO.....3.00
184. 18.1.6, fractional rate cover.....2.00
185. 19.3.6, specimen cut.....3.00
186. 40.1, NCR tape no. 121 TORONTO on large piece,10.00 *
187. 40.2, NCR tape tied to piece w/ two round purple handcancels.....5.00
188. 41, 110 small NCR tapes, some dup but much variety. A nice lot.....25.00
189. 51.1, five covers with different register numbers.....2.00
190. 200 post office meters, types 9.3 and 10.1, most on tape but a few on cover and on postal receipt. Great variety of towns and stations. Some dup.....20.00
191. Military meters, six covers, seven pieces. Noted C.A.P.D. 5051, 5052 plus various RCAF stations.....20.00 *
192. Class and directional slugs such as BULK, VIA AIR MAIL, etc. 44 covers plus 32 tapes & pieces with a wide variety of markings.....10.00
193. Canada official, "Postage Paid" permits, and business reply mail, 2 lbs of covers and fronts. Nice assortment including two varieties of airgraph.....10.00

FOREIGN

194. ARAB countries of the Middle East including Trucal states and other small entities such as Abu Dhabi, Aden, Bahrain, Dubai, and Qatar. Also Iran. Other countries also included. A nice lot with many rarely seen meters. 200 covers/fronts/cuts. Dups.....25.00
195. AUSTRALIA, 70+ NCR tapes, good variety of styles and towns.....8.00
196. BANGLADESH, 8 covers with provisional meters. Former country name (Pakistan) removed. Three have "BANGLADESH" handstamped over meter...10.00 *
197. CANAL ZONE, PB meter #62 with arabic date (20.12.68), cover.....2.50
198. CANAL ZONE, meter nos. 1 thru 95. 30 different number/TM/slogan combinations. Mostly covers, some tapes, 1 piece. Includes date varieties.....10.00
199. CHINA, Shanghai meter no. 3 used by Bank of China on 3/5/60 cover.....5.00 *
200. EGYPT, Barfoot-Simon #9, Nassim/Klussendorf coin-operated meter on cover, possibly a proof impression.....5.00 *
201. GREAT BRITAIN, first type, 9 different Barfoot-Simon numbers from no. 1 to no. 30. 35 items in all, 25 covers and 10 cuts mounted in loose-leaf binder. A scarce lot.....50.00 *
202. GREAT BRITAIN, Pitney Bowes Diamond Jubilee souvenir cover plus adhesive label with Diamond Jubilee logo. Twenty sets available. Minimum bid per set.....2.00
203. IRELAND, good variety from early types with circle in center to modern. 97 covers, tapes and cuts.....20.00
204. ISRAEL, small lot of 60 covers, fronts, cuts plus one Palestine cover and 3 cuts in mixed condition, some dup.....5.00
205. KATANGA, top strip of metered cover used in Congolese rebel province during civil war (VR).....20.00 *
206. KOREA, 75 covers & fronts plus 14 tapes, duplication.....5.00
207. MARTINIQUE, meter #P10516 with inverted townmark, cover opened on 3 sides.....5.00 *
208. NETHERLANDS, Barfoot/Simon no.2, nice cover, M#4, 15c, dated 20 I 27.....5.00 *
209. PALESTINE, six fronts and large pieces, two different types, three different meters, some impressions weak.....10.00 *
210. SAUDI ARABIA, 102 Pitney Bowes covers (some fronts), all different numbers from PR4 to 1601, including 46 numbers below 100.....5.00
211. SOUTH VIETNAM, 69 covers/fronts plus 19 cuts. Also 3 pre-Vietnam covers (SAIGON/INDOCHINA), duplication.....15.00 *
212. Small countries of ASIA and the PACIFIC - Burma, Fiji, Macao, New Caledonia, Papua New Guinea and Tahiti, 100 covers/fronts/cuts....10.00 *
213. Small countries of EUROPE - Andorra, Cypress, Malta, Monaco and San Marino. Mix of 35 covers/fronts/cuts, some dup.....10.00
214. Dead countries of EUROPE - Bohemia & Moravia, Danzig Free State, and Saar. Small selection of cuts and fronts, 25 pieces, some dup.....10.00 *
215. Foreign accumulation, a real mish mash of foreign meters mostly on cover or front. There is much here from the 1930s and 1940s, some 1920s. Approx. weight 25 lbs.....25.00

FOREIGN LARGE LOTS

The following 23 lots are from a large bulk accumulation that has been divided into country and regional lots. Condition in all cases is mixed with many cuts and fronts and many covers that have been opened on three sides. There is much duplication but also great variety. All material is non-philatelic in origin. The approximate weight for each lot is provided to give you an idea of what the shipping charges will be.

216. Australia, 120 lbs (a biggie!).....35.00
217. Austria, 3 lbs.....8.00
218. Belgium, Netherlands, Luxembourg and Netherlands colonies, 14 lbs.....15.00
219. Brazil, 3 lbs.....5.00
220. Canada, some nice items, 100 lbs.....40.00
221. Central American countries, 5 lbs.....10.00
222. Eastern Europe and USSR (Soviet Bloc countries), 6 lbs.....10.00
223. France and some colonies, 9 lbs.....12.00
224. Great Britain (no first type), 48 lbs.....20.00
225. India, Pakistan, Bangladesh, Ceylon, 10 lbs.....10.00
226. Italy plus a few Vatican, 7 lbs.....10.00
227. Japan, includes lots of NCRs, 6 lbs.....15.00
228. Mexico, 4 lbs.....10.00
229. New Zealand, 25 lbs.....15.00
230. Scandinavia, incl. some Greenland and Iceland, 10 lbs.....15.00

231. Small countries of AFRICA - a great lot with many rare meters. Some noted are Botswana, Cape Verde, Belgian Congo, Djibouti, Middle Congo, Gold Coast, Lesotho, Madagascar, Malawi, Mauritius, Rhodesia & Nyasaland, Southern Rhodesia, Ruanda Urundi, Sierra Leone, Somalia, Upper Volta, Zambia and Zimbabwe. Many other countries also included. This is a chance to obtain a large number of seldom seen meters. Approx 5 lbs..50.00 *
232. South Africa, 6 lbs.....10.00
233. South America (no Brazil), 6 lbs.....10.00
234. Southeast Asia (Singapore, Hong Kong, Malaya, Malaysia, Indonesia) 7 lb..15.00
235. Spain, 3 lbs.....5.00
236. Switzerland plus a few Liechtenstein, 9 lbs.....10.00
237. West Indies (Carribean area) including some nice Cuba, 6 lbs.....10.00
238. A little bit of everything plus whatever wouldn't fit any place else. Some good stuff mixed in with a lot of odds & ends, 115 lbs.....35.00

ATM (FRANK) STAMPS

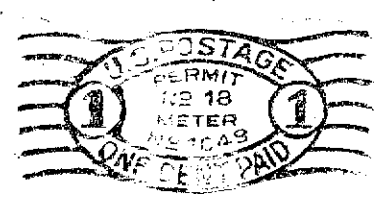
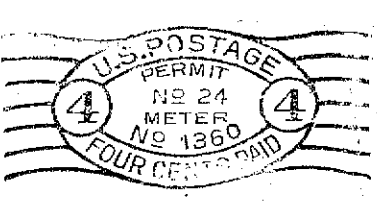
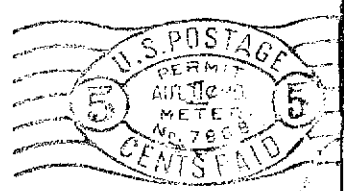
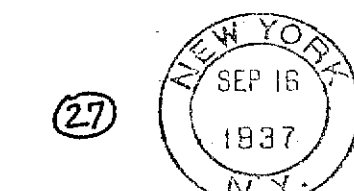
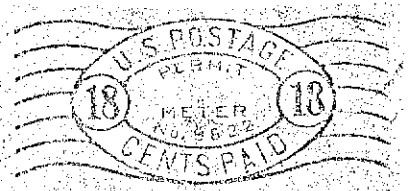
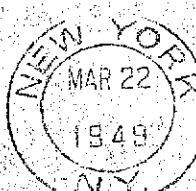
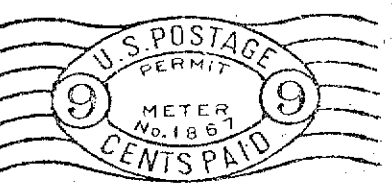
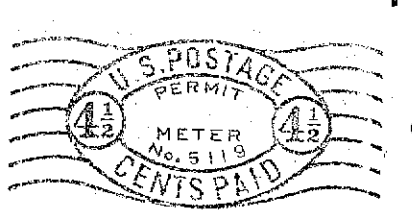
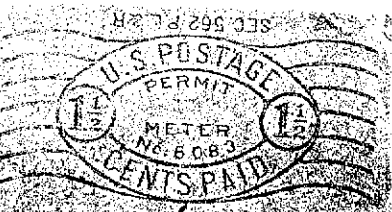
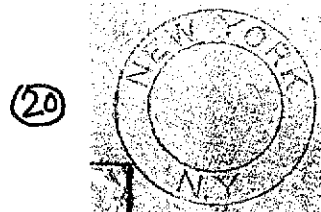
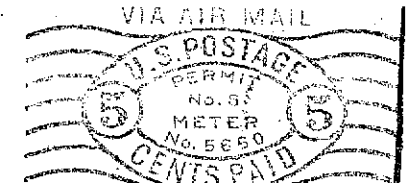
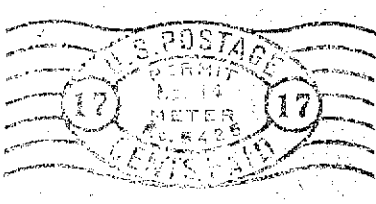
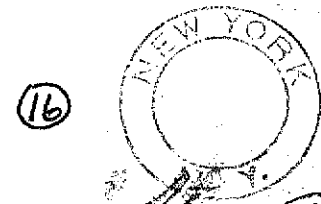
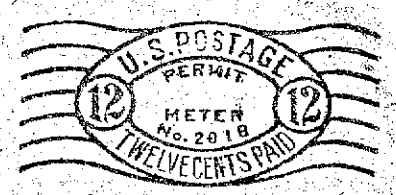
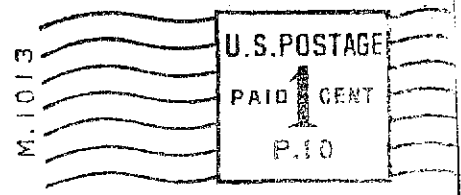
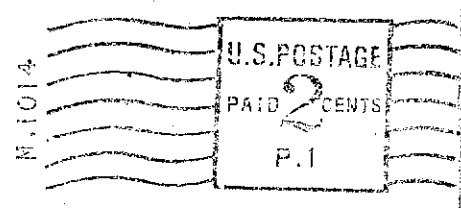
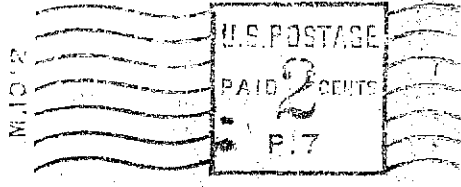
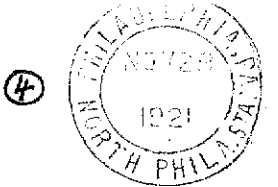
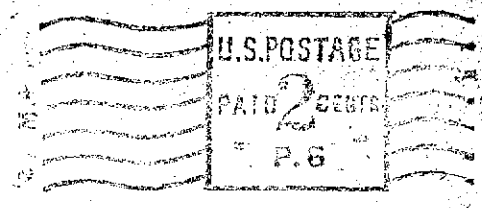
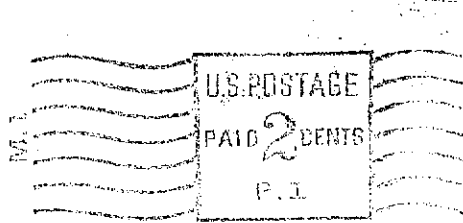
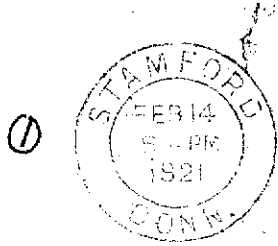
239. PORTUGAL, mint label #010 printed on gummed side.....15.00
240. SOUTH AFRICA, first issue #P.001, FDC plus mint and CTD labels.....4.00

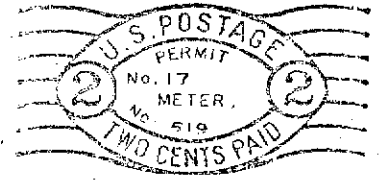
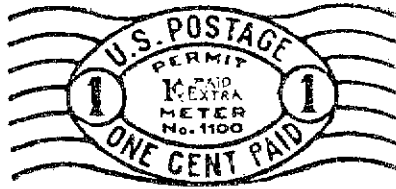
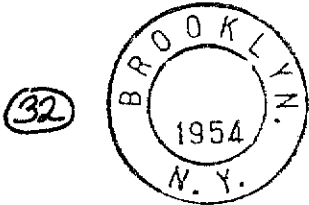
LITERATURE

241. Meter Slogan Associates Monthly Bulletins, Vol.1 #1 (June 1938) thru Vol.6 #5 (Feb-Mar 1944, probably the last issue), complete less Vol.1 #4 and #6. Includes reference lists and rosters. Contains much valuable information. This is great meter history.....40.00
242. Meter Stamp Society Bulletins nos. 171, 183-201, 18 issues including several double issues plus a copy of MSS auction #1.....15.00
243. POSTAGE METER CATALOGUE, William C. Steiger, 1st ed. 1931 plus 1932 addendum. This is a listing of all known (at the time) U.S. square (type B) and oval (type C) meters. Unbound.....15.00
244. CATALOG OF METER SLOGANS, Walter M. Swan, Postal Markings Handbook #2, 1939. Priced catalog.....10.00
245. A HANDBOOK OF UNITED STATES POSTAGE METERS INCLUDING METER SLOGANS, William C. Steiger, 1st ed. 1938 and 2nd ed, 1940. Two books.....10.00
246. THE METER POSTAGE CATALOG, Albert H. Harris, 3rd ed. 1940. World wide meter catalog published in England.....10.00
247. A TYPE CHART OF UNITED STATES POSTAGE METERS, Steiger and Pamperien, 3rd ed. 1945.....5.00
248. THE BASIC TYPE METER STAMP CATALOG, Walter Swan, 3rd ed. 1959. Priced...10.00
249. THE UNITED STATES POSTAGE METER STAMP CATALOG, Werner Simon and David P. Walsh, 1976 plus Addendum #1, 1982.....16.00
250. Small lot of Pitney Bowes press releases, meter article magazine and newspaper clippings, and a copy of CLASSIFICATION OF UNITED STATES POSTAGE METER PRINTS (MSS pub. #3), 1951.....10.00

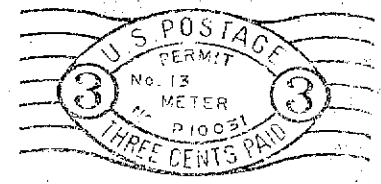
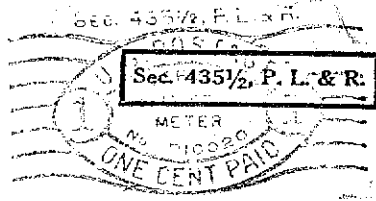
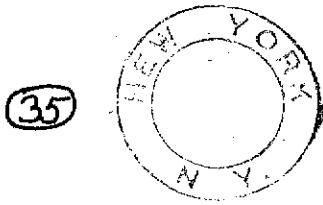
MISCELLANEOUS

251. "Meisel Meters", set of 15 different varieties on types CD, DD, DH and EA, as illustrated in Bulletin's 172-174.....5.00
252. Postage due specialty items: POD form 3602 (MAILING STATEMENT - THIRD CLASS MAIL) attached to sheet of paper with meter stamps affixed. From 1960 to 1963 the Soybean Assn franked their 3rd class mail with 1c meter stamps altho the rate was 1-1/4c. Their type HA4 meter did not print fractions of a cent. After each mailing they would run off the difference onto meter stamps, affix them to a sheet of paper and attach POD form 3602 to it. Many of the meter stamps have slogans. There are 16 such sheets available. When bidding list your single sheet bid but include the total number of sheets you want, i.e. 2 sheets at \$x.00 each.....Minimum bid per sheet 1.00
253. Same as previous lot but type HA4 meter used. One sheet available.....1.00
254. Official mail permits, 17 lb box of press printed and machine printed U.S. official mail indicia on cover, some duplication.....10.00
255. Official adhesive postage stamps, Scott 0128, 4c, used block of 8.....2.00

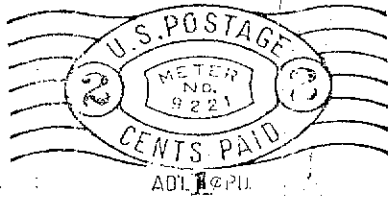
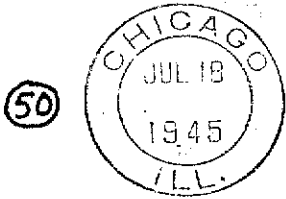




(34)

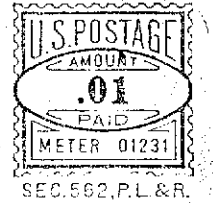


(38)



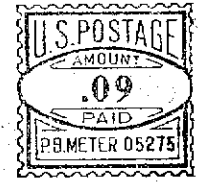
(57)

(53) *Adhesive Stamps are Out of date!*

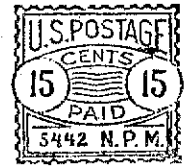


(60)

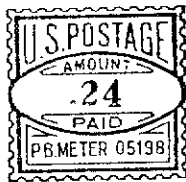
(54) *You see more and more Metered Mail*



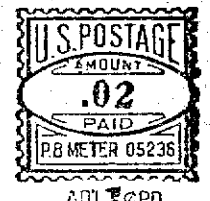
(61)



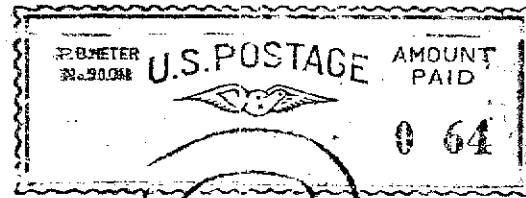
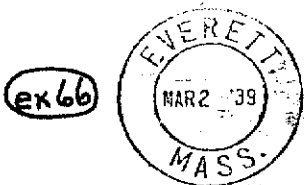
(57)



TELEGRAPH
AFTER 3 DAYS RETURN TO
1844
LUNDS BELL TELEPHONE COMPANY
CHICAGO OFFICE
1944
212 WEST WASHINGTON STREET
CENTENNIAL
CHICAGO, ILL.



(6)



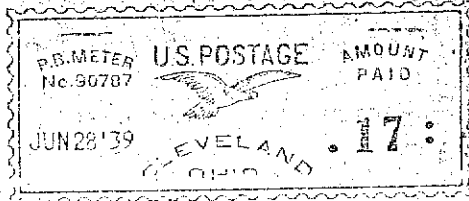
(83)

68



Central ELECTRICITY & SERVICE FOR fastest NATIONAL DISTRIBUTION

PERMIT 100

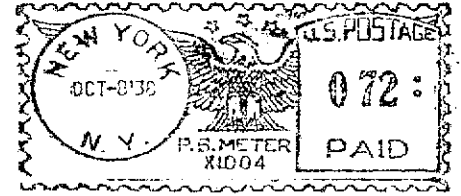


85

86

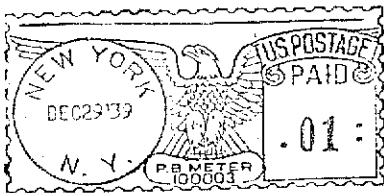
CONTENTS: MERCHANDISE
 This Parcel may be opened for Postal Inspection if necessary.
 Return Postage Guaranteed
J. W. ROBINSON CO.
 Box 2060 Van. Sta. Los Angeles, Calif.

P.B. METER No. 90512 U.S. POSTAGE AMOUNT PAID DEC 22 '37 LOS ANGELES CALIF. 09

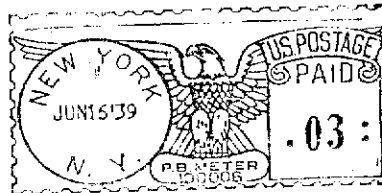


90

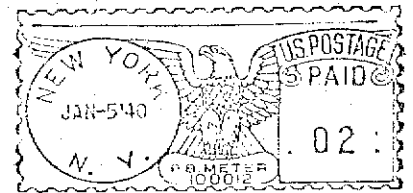
91



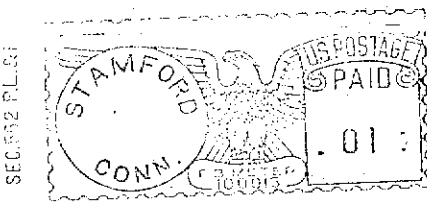
92



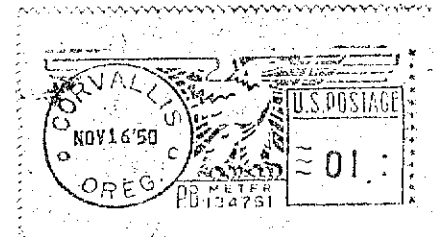
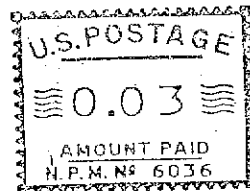
93



94

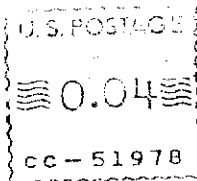


95

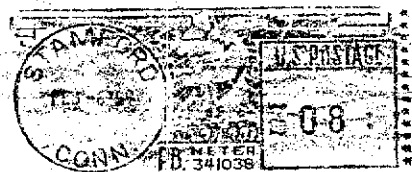


100

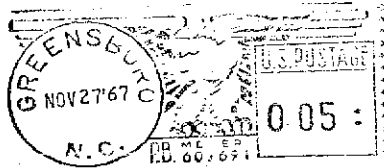
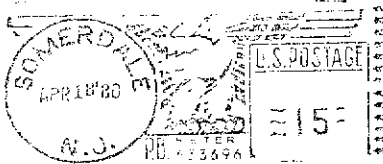
97



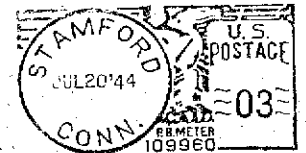
101



102



103



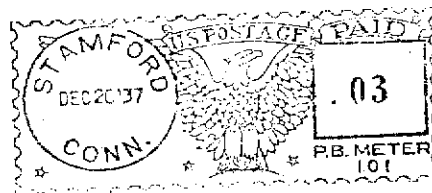
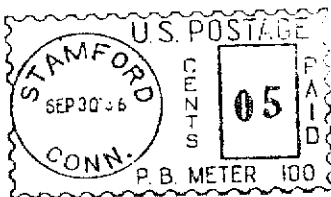
104

106

Automate with Inden

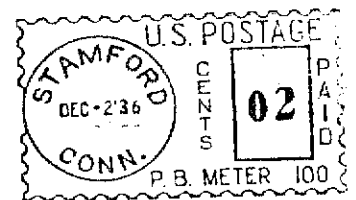


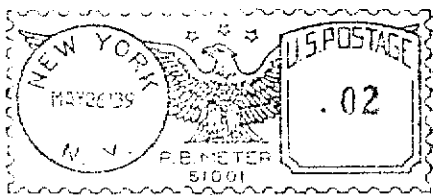
108



109

107

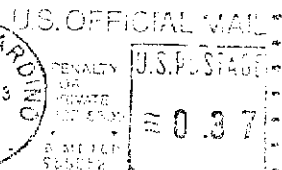




110

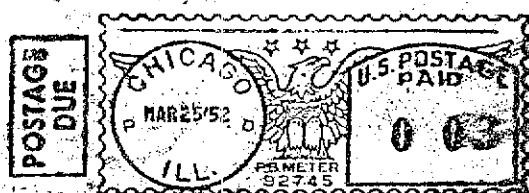
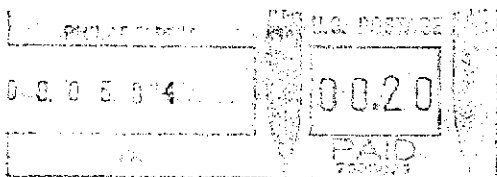


117



128

ex 125



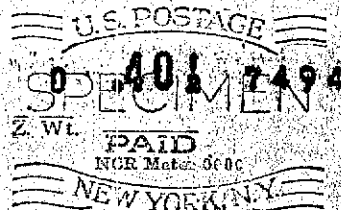
126

130

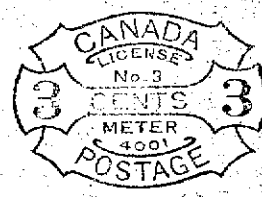
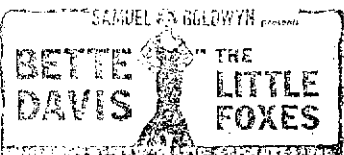
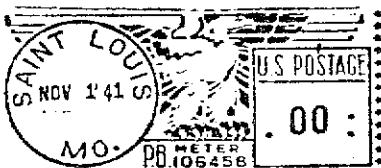
POSTAGE AND FEES PAID DEPARTMENT OF THE ARMY DoD-314



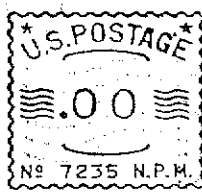
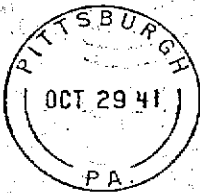
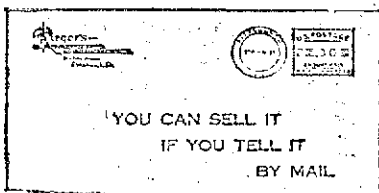
OCT 20 1935



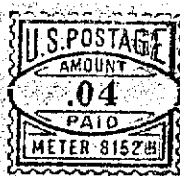
134



162

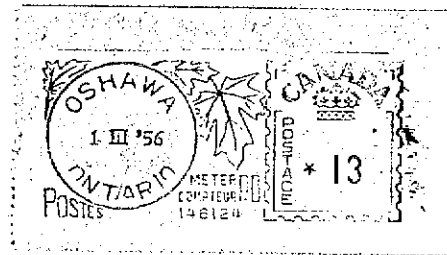


ex 143

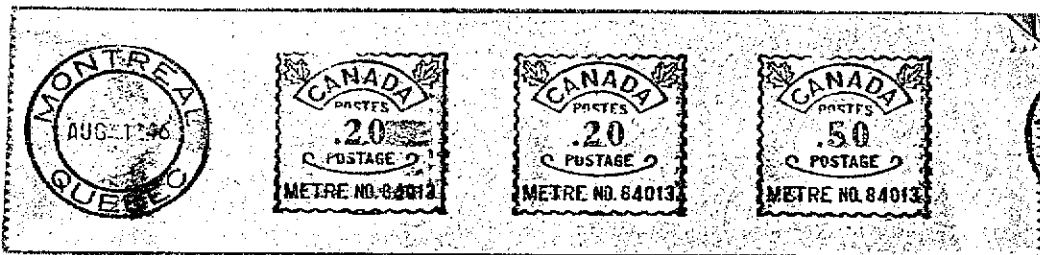


170

ex 149

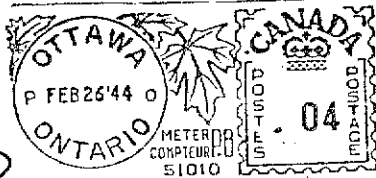


ex 179

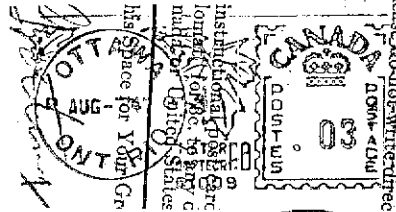


ex 165

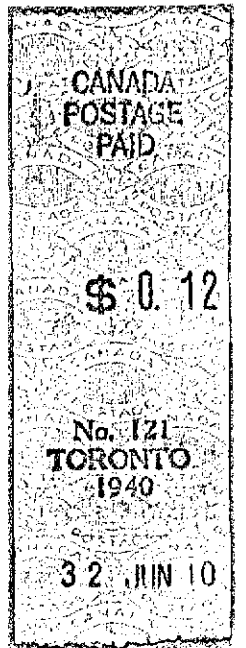
to SERVE by SAVING
SAVINGS CERTIFICATES



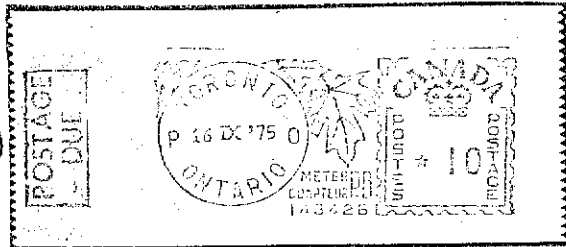
175



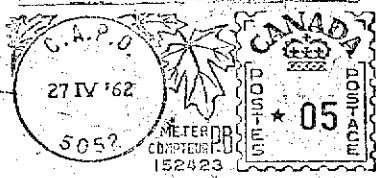
173



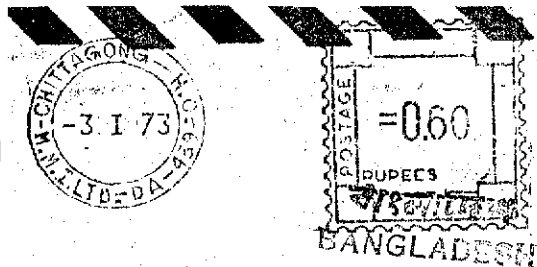
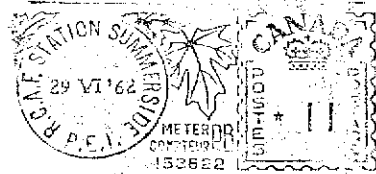
186



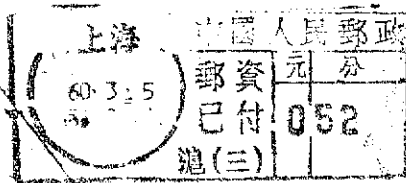
172



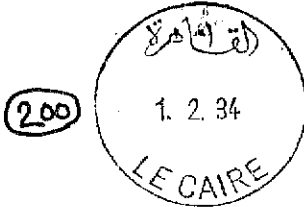
EX 191



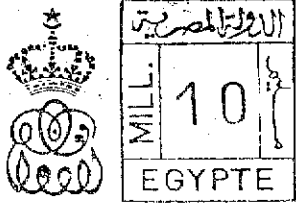
EX 196



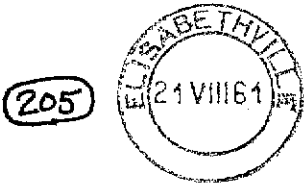
199



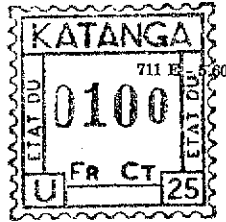
200



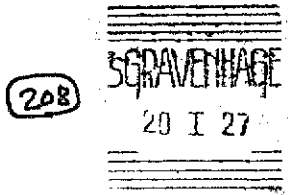
EX 201



205



207



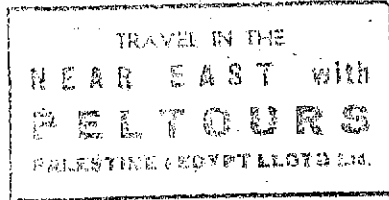
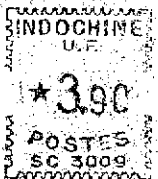
208



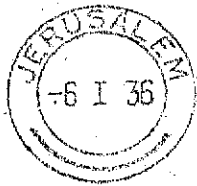
DIETHELM & C^{IE}
IMPORT-EXPORT
SHIPPING ASSURANCE

= 12 SEP 51 = SAIGON R.P. =

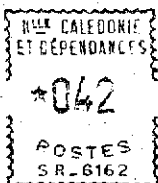
EX 211

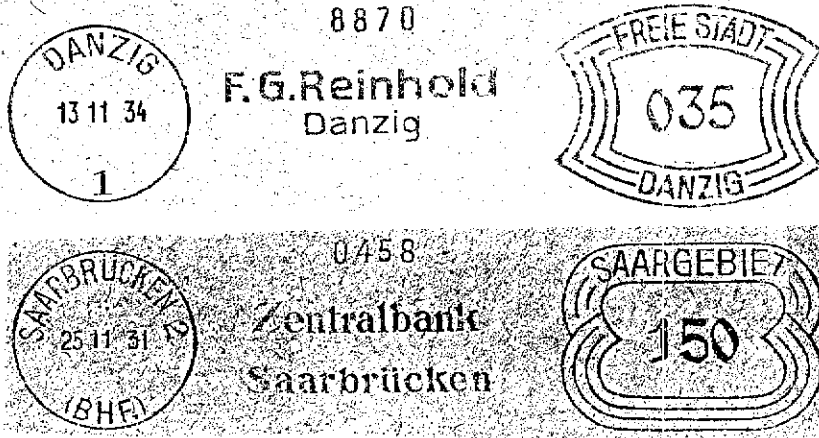


EX 209



EX 212





EX 214



56 = TANANARIVE R.P. =

EX 231