

Exhibit Name

Pineapples

Pinas Ananas

The Story of the pineapple (Ananas comosus) from its humble origins to a crop of major economic importance and its relation to man.

Author

Phillip J. Stager

Awards: This one frame exhibit has been awarded several national Platinum medals and two or three FIB one frame gold medals..

Date Donated 6 August, 2006

Date Posted: 29 August, 2006

Copyright statement:

This exhibit was not copyrighted by the author. However, all materials in the possession of the Meter Stamp Society may not be used verbatim or sold without express written permission.

PINEAPPLES

PIÑAS



ANANAS

The story of the pineapple (*Ananas comosus*) from its humble origins to a crop of major economic importance and its relation to man.

CORREOS DE COSTA RICA
IMPRESOS



Four centimos Wrapper for International Use

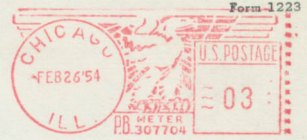
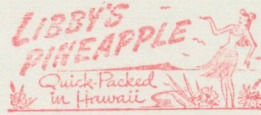
Plan of the Exhibit

		Page
	Title and Plan Page	1
1.	Introduction	2-3
1.1	Classification and Terminology	
1.2	Early History	
1.3	Dispersal	4-6
2.	Cultivation	7-11
3.	Products	12-13
4.	Symbology	14-16

3. PRODUCTS

Libby's is a major pineapple processor in Hawaii ...

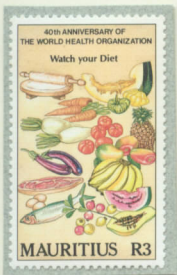
LIBBY, McNEILL & LIBBY
 PACKERS AND EXCHANGE AVENUES
CHICAGO 9
 OFFICE OF THE SECRETARY
 Return in five days



The pineapple is frequently combined with other fruits - fresh and preserved.



...but do not mix your addresses with your fruit.



Cancelled: Sultan Petaling Jaya, 4 SEP 1972
 Backstamped: Dead Letter Office, Bangkok, 26 SEP 72
 Kuala Lumpur, 3 OCT 1972

5. FINAL STOP

The pineapple brought news of someone's final stop.



Cancelled: En 18 1951 San Jose Costa, Rica - 3 centavos local letter rate.

But let us end our story of the pineapple on an upbeat at a stamp show at the one and only **BIG PINEAPPLE** - a working pineapple plantation and tourist attraction in Nambour, Qld, Australia .



20 cent Postal Card - Indicium same as picture.

1. INTRODUCTION

Let us begin our study of the pineapple with some technical information and terminology.

1.1 CLASSIFICATION AND TERMINOLOGY

The pineapple is classified by the binomial system of nomenclature of Carl Linnaeus.



Sheet Stamp



Coil Stamp

The pineapple is in the family *Bromeliaceae*, the genus *Ananas*, and the species *comosus*. Common relatives you may know include ornamental members of the Bromeliad family.



Tillandsia sp. on upper branches; *Vriesia* sp. on lowers.

To assist you in understanding the pineapple plant, its various parts are shown and labeled below on this postal card from Ecuador.



Indicium (COPY)

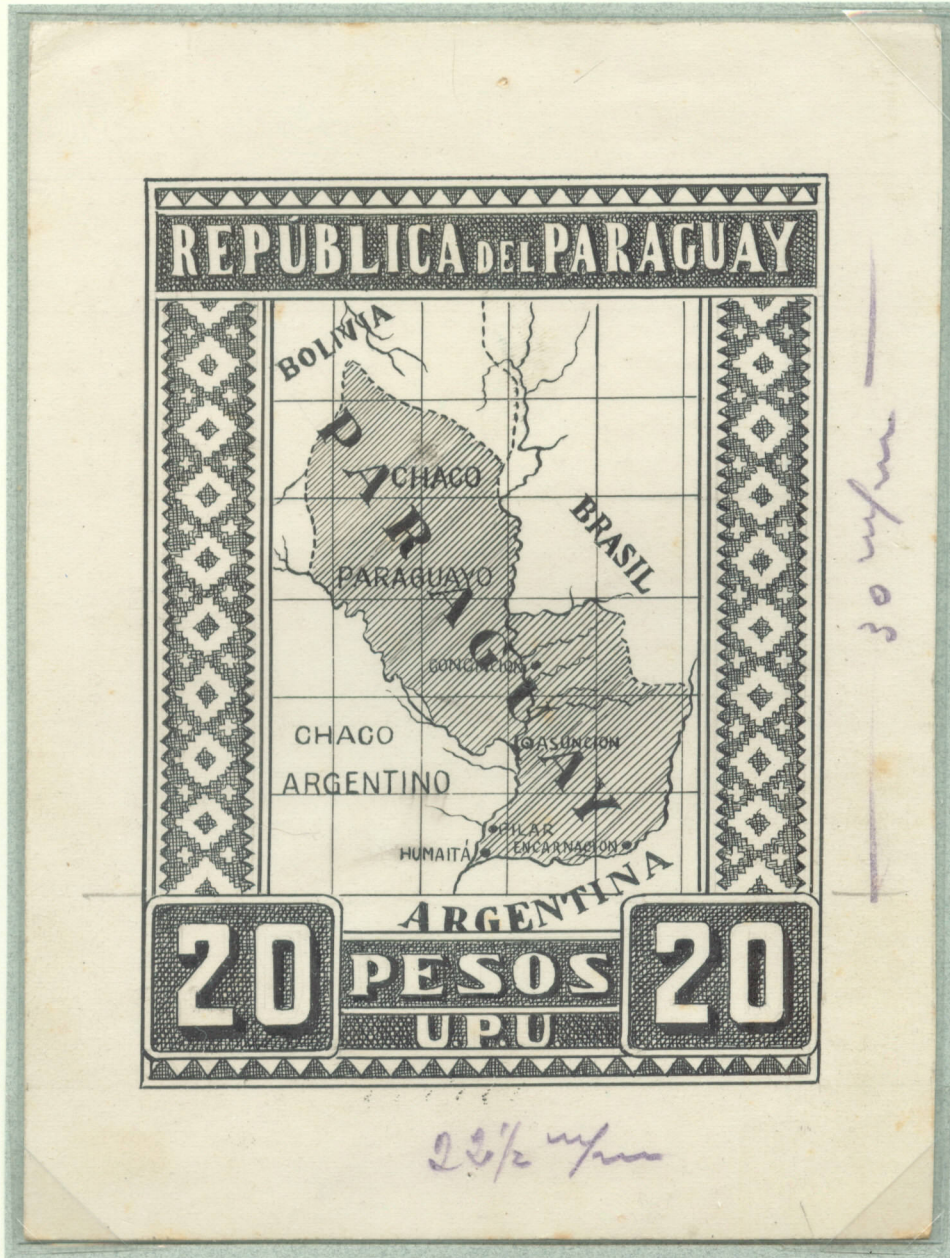
- Spiny variegated leaves
- The Fruit
- Used for propagation:
 - Fruit crown - used only after harvest
 - Slips - rise from stalk below fruit
 - Suckers - arise at axils or leaves
 - Ratoons - arise from underground portions of stems

Piña - Fruta que produce y exporta el Ecuador

Pineapple - Fruit produced and exported by Ecuador. 34

1.2 ORIGINS

The pineapple is a New World plant.
It is native to southern Brasil and Paraguay, especially in the Parana-Paraguay River area.



Artist's Ink Drawing
Trail Color
Plate Proof on Card ->



Red, 1929



Emerald, 1929



Violet-Brown, 1929

1.3 DISPERSAL

The AmerIndian natives cultivated the pineapple and spread it throughout the tropical New World.



During his second voyage, Columbus discovered the pineapple on Guadeloupe in 1493 - where the pineapple is still an important local food - and again later in Panama in 1502.



Printer's waste and another bad stamp design - the coconut, watermelon, and citrus are not New World plants.

Portuguese traders and explorers brought the pineapple from Brasil...



... to India by 1548

... to the east and west coasts of Africa

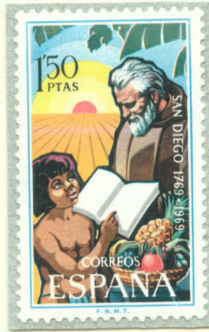


... and to smaller islands.

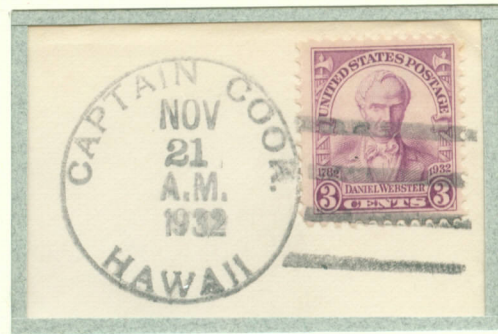


1.3 DISPERSAL

The Spanish dispersed the pineapple throughout their tropical parts of their empire.



Captain Cook planted pineapples on various tropical Pacific islands in 1777 and 1778.



In 1838 Lutheran missionaries brought the pineapple to Australia where it still flourishes.



Cancelled: Ipswich June 27 00 Received: Brisbane June 28 00

Almost 100 years later, a pineapple tax was levied to improve and promote Australian pineapples.



2. CULTIVATION

The pineapple is now cultivated throughout the tropics and in some temperate climates.

A wide variety of distinct cultivated varieties (cultivars) have been developed to suit local soils, climates, and tastes. The obvious differences in shape and size are due to these differences.



The pineapple may be grown in small holdings like this 'plantation' in Tonga ...



Tonga Postal Card Cancelled: ? May 1910, Transit: Nukualofa 11-June 1910, Received: Wellington, NZ 20 June 1910

... or in large plantations for commercial use.



2. CULTIVATION

The pineapple is normally propagated vegetatively through ratoons, slips, or the tops of harvested pineapples, which are then set out in large fields ...



... and after 15 - 22 months, the juvenile green pineapples approach maturity.



Light Green



Dark Green



As most cultivars approach maturity, they become a gold or golden green color.



Unlisted imperforate variety



2. CULTIVATION

The timing of the harvest depends on the skill and experience of the grower.
Harvesting is brutal work due to the spiny leaves.

Off to market.

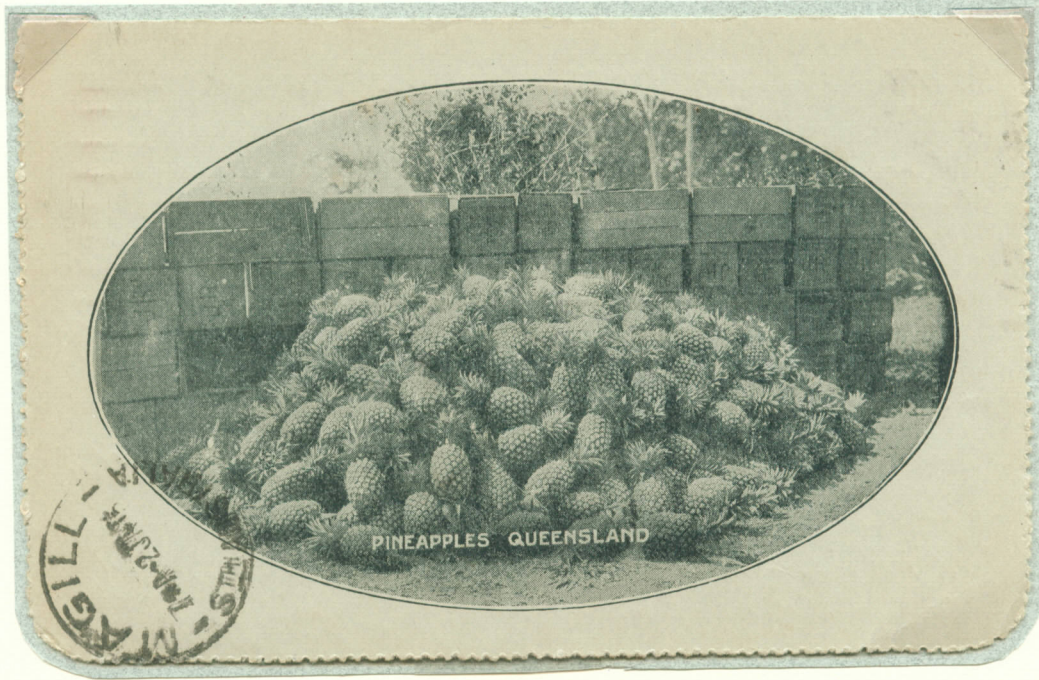


A ripe pineapple has a white to golden flesh;
these fruit are ready for harvest and to eat.



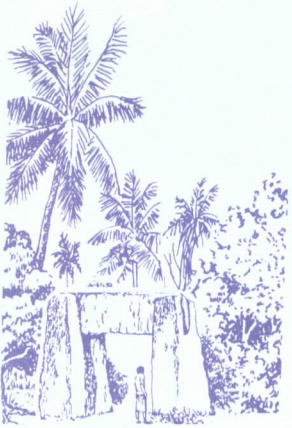
2. CULTIVATION

The recently harvested pineapples are gathered for local shipping in wooden crates.



1 penny Australia Illustrated Lettercard Sydney NSW 30 Dec 1914 to Maigill, SA 2 Jan 1915

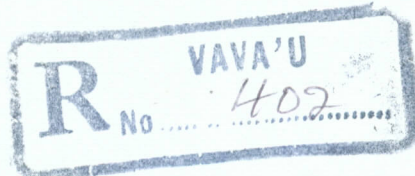
On remote islands like Tonga, pineapples, both edible and philatelic, are an important export.



GREETINGS FROM
THE KINGDOM OF TONGA

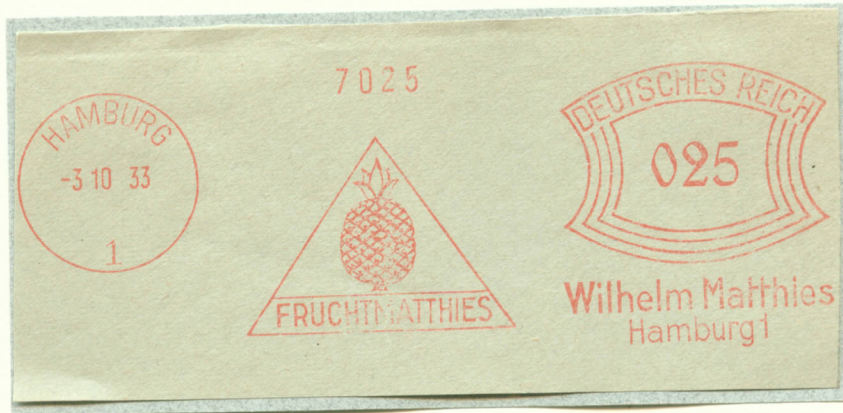
VU deep - 89

To
DEPUTY COMMISSIONER
INLAND REVENUE (56)
P.O. BOX 7
NUKU'ALOFA
TONGA.



3. PRODUCTS

Fresh or processed, the pineapple is delicious.
 Fresh pineapples must be imported quickly since they have a limited shelf life.



Check out the fresh pineapples and other fruits available from...

a traditional bearer...



this Carmen Miranda look-alike or ...



Perf. SPECIMEN

a local vender.



... but never eat the Pineapple Fish.



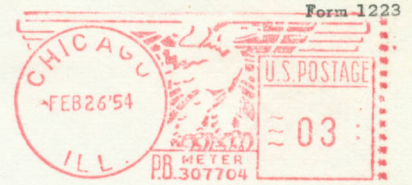
Most pineapple is canned or processed for juice.
 DelMonte and Dole are two common brand names.



3. PRODUCTS

Libby's is a major pineapple processor in Hawaii ...

LIBBY, McNEILL & LIBBY
 PACKERS AND EXCHANGE AVENUES
CHICAGO 9
 OFFICE OF THE SECRETARY
 Return in five days



and is a major exporter to Europe.



Publibel #969 in French; #970 in Flemish.

The pineapple is frequently combined with other fruits - fresh and preserved.



4. SYMBOLOGY

The pineapple has long been a symbol of hospitality and welcome.

The Carib Indians welcomed the Spanish with pineapple and other fruit (big mistake).

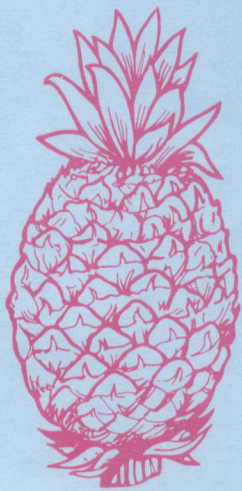
NB. The banana is not a New World plant.

The ASDA welcomed collectors with a pineapple show cancel.



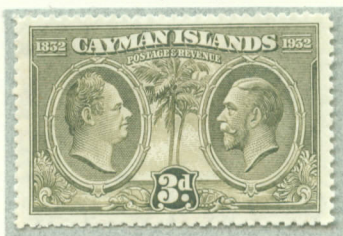
Antigua and Barbuda welcome us with this pineapple.

BY AIR MAIL
PAR AVION
AIR LETTER
AEROGRAMME



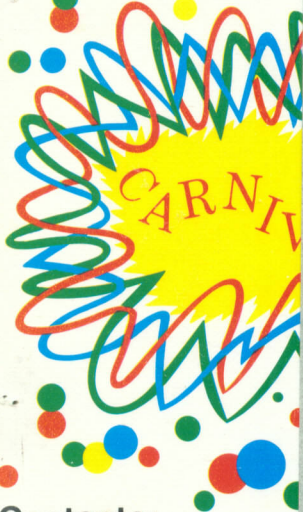
The carnival Pineapple Queen on St. Vincent will give you a welcome you will not forget!

William IV was known as 'old pineapple head' due to an oddly shaped skull.



Also known as the Sailor King due to his adventures in many Caribbean brothels.

Postage
of St. Vi



Contents:
5 at 1c, 1 at 15c,
1 at 25c, 1 at 35c,
1 at 45c, 1 at \$1.25

St. VINCENT CARNIVAL '75



ST. VINCENT • 15c



ST. VINCENT • 35c



ST. VINCENT • \$1.25

4. SYMBOLOGY

Four stylized pineapples atop the entrance welcome us to the Martinique Pavillion at the 1931 French International Colonial Exposition.



Edition de ASSOCIATION DES COLLECTIONNEURS D'ENTIER-POSTAUX
Carte 6, Serie No.369 15 centimes domestic rate

The pineapple is a welcome addition to almost any diet or cuisine.



Eat a balanced diet!



Monochrome Proof



Full Color Proof

4. SYMBOLOGY

The pineapple is an important part of Jamaican culture ...

from the five golden pineapples on the Coat of Arms designed in 1661 ...

... the pineapple watermark on its first postage stamps ..

... and the 1962 Independence issue.



1903 Issue



1910 Issue



Two pineapples grace a portrait of the Queen.



Booklet Pane (from margin of sheet stamps) and Inside Covers

A pineapple handstamp justifies the postage on this Official Mail.

ON JAMAICA GOVERNMENT SERVICE

"NATIONAL ECONOMY
OPEN Carefully
RE-USE With Economy Label"

VN#6

The Head Postmaster.
Parcels Section.
Toronto, Canada.

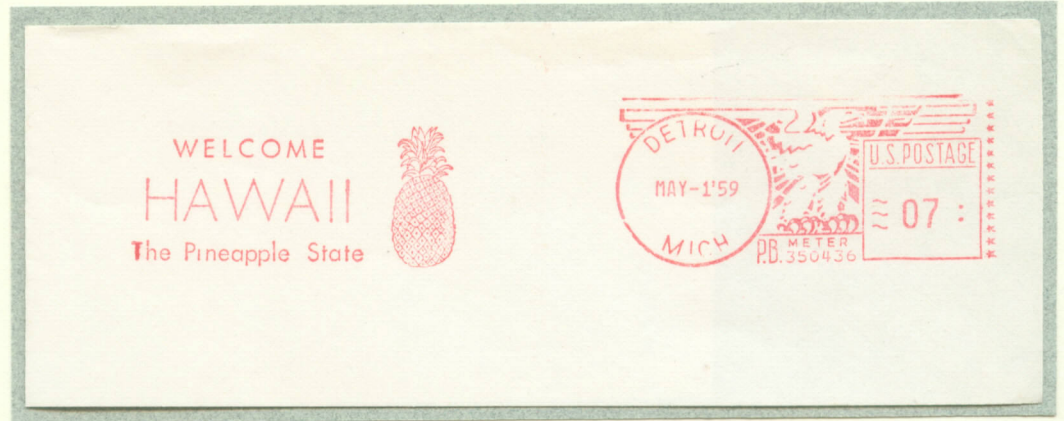


POST & TELEGRAPH HEADQUARTERS
SOUTH CAMP ROAD,
KINGSTON

462013/2

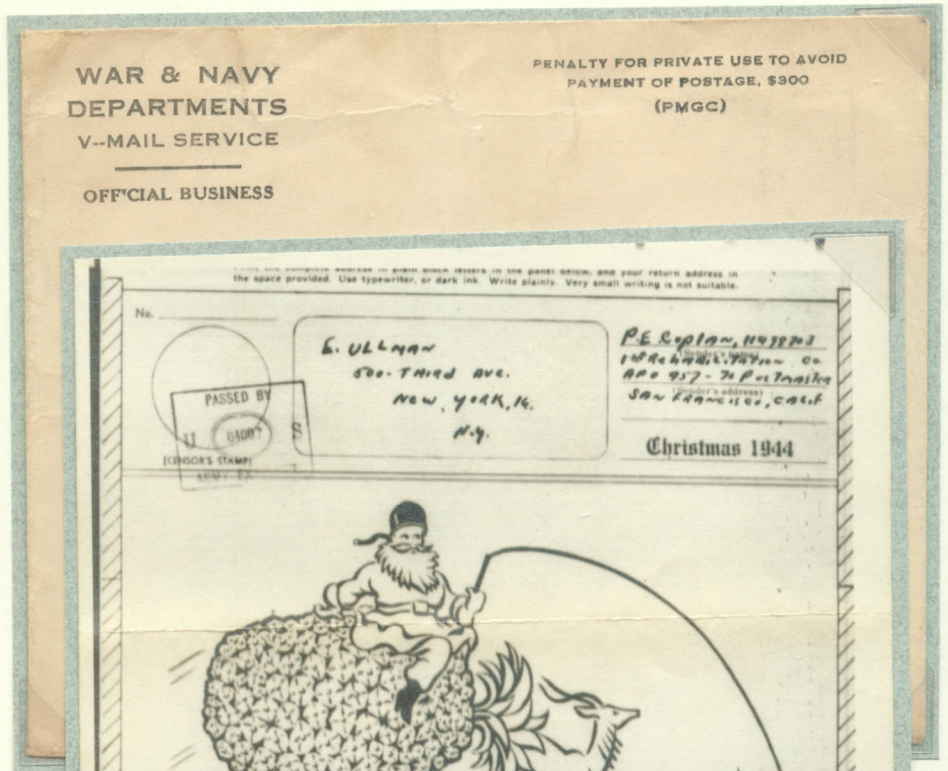
4. SYMBOLOGY

Hawaii is frequently known as the Pineapple State.

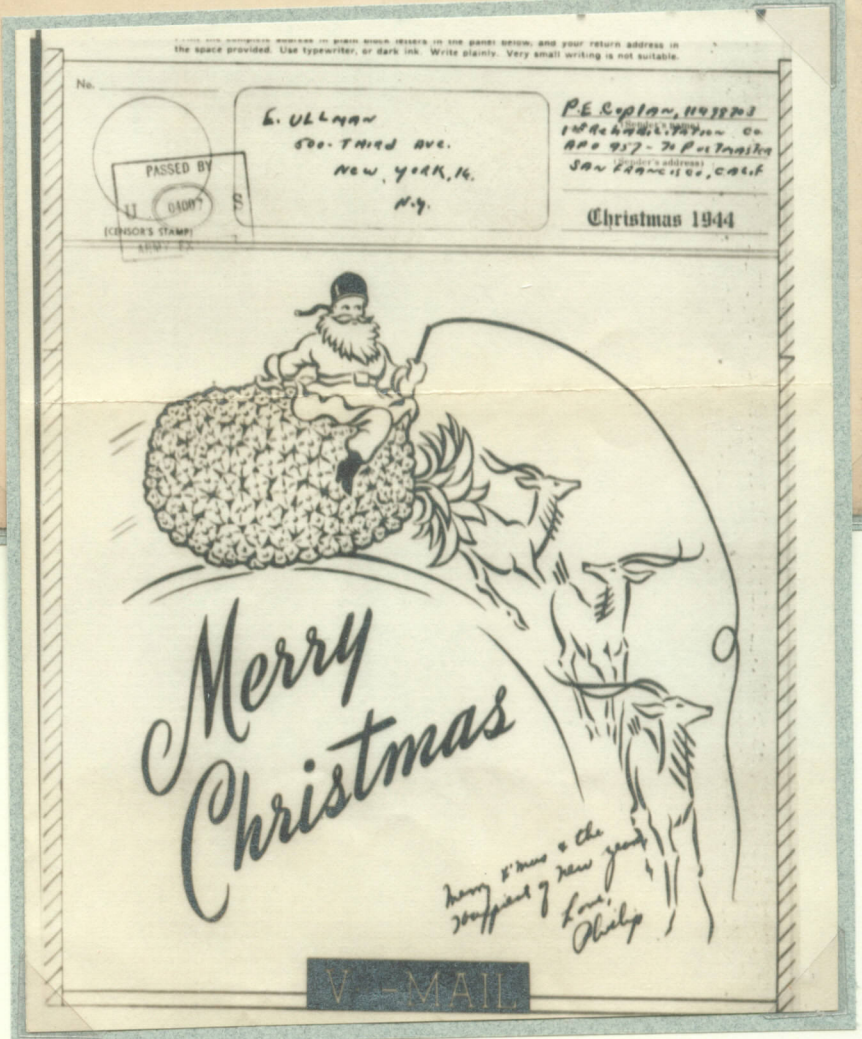


The pineapple was a symbol of hospitality for Japanese immigrants to Hawaii ...

... and when anti-Japanese sentiment was at its greatest during WWII, Santa brings Christmas greetings on his Pacific pineapple.



...and a pineapple and other tropical fruits helped Guyanese celebrate Christmas in 1974.



5. FINAL STOP

Let us end our story of the pineapple at the one and only BIG PINEAPPLE - a working pineapple plantation and tourist attraction in Nambour, Qld, Australia.

SOUVENIR COVER



THE C
BIG PI

MS 2071 Bruce
Queensland
Telephone (074)

**Nambour and
Stamp Fair**



maicium
110% COPY