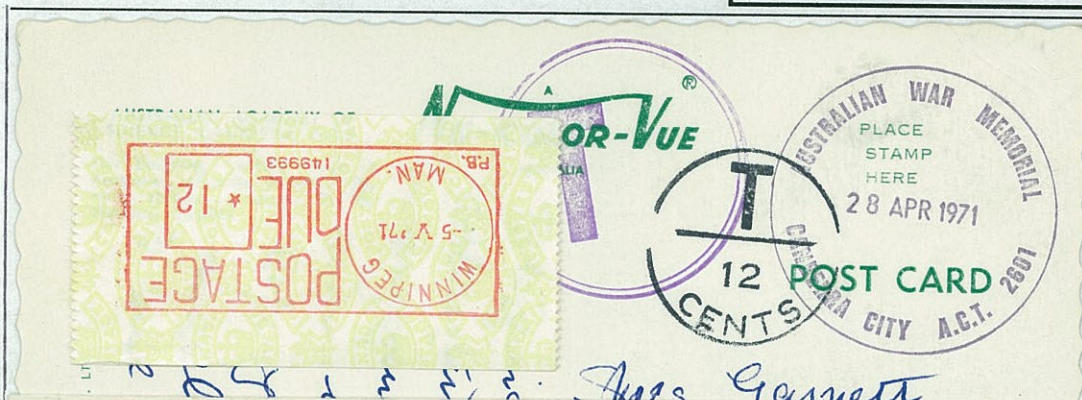
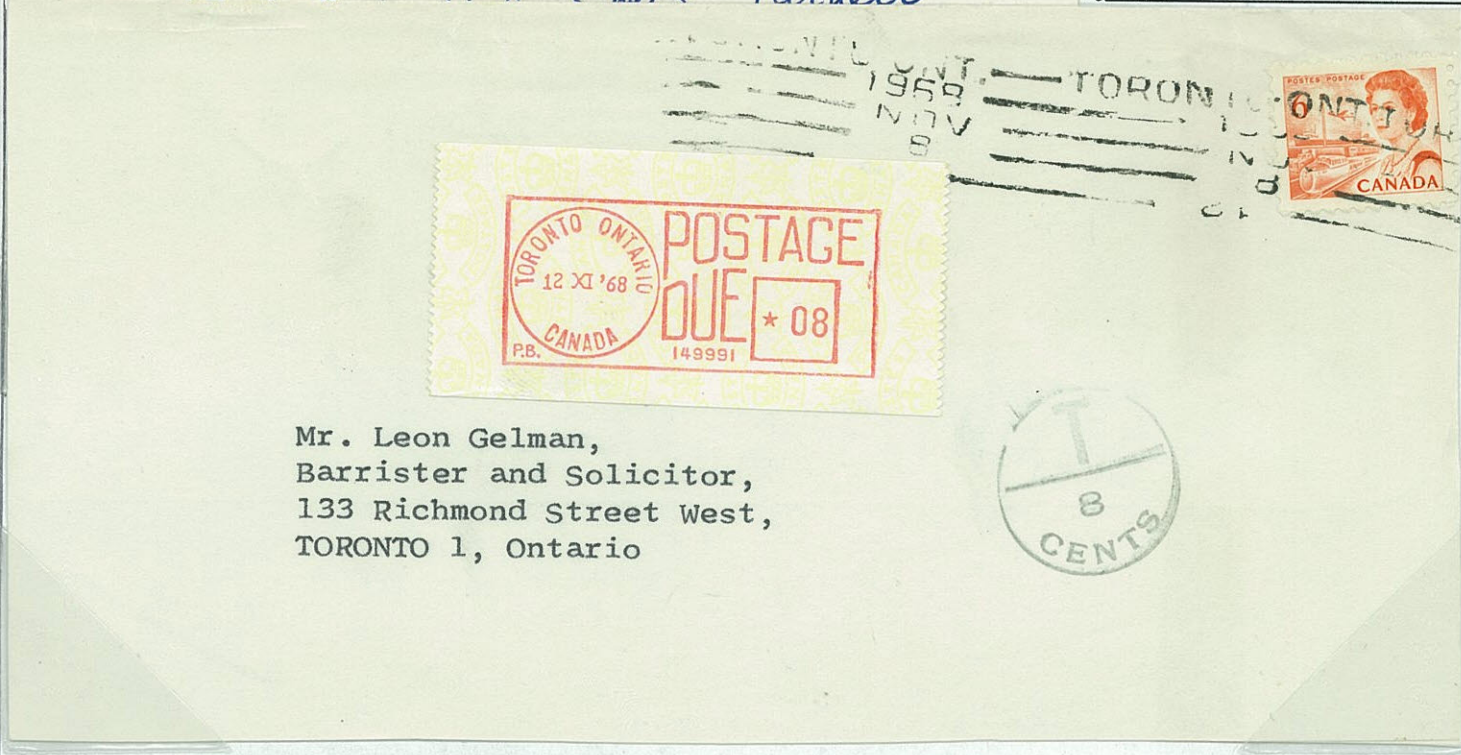


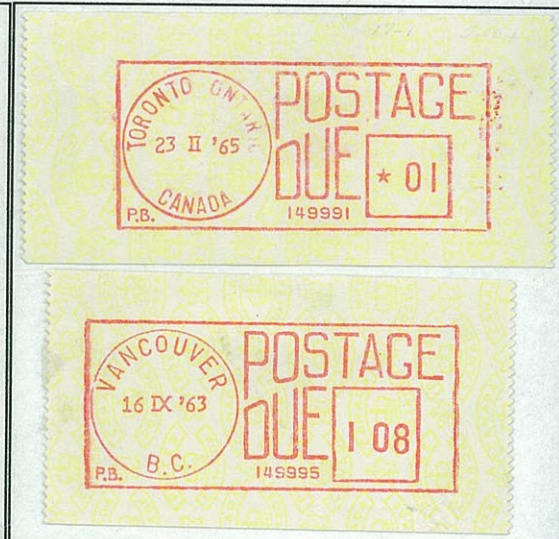
1.5.1 First Pitney Bowes Maple Leaf
Post Office Meters



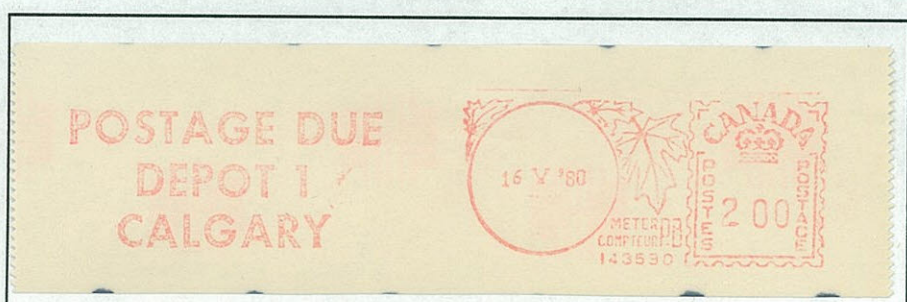
Pitney Bowes
Introduced: 1956
Special meter with "Postage Due" inside indicia.
FV: * 00
Values: OV to 9.99
Meters 149201 Installed 3 February 1953 Reassigned 149990
149990-149997 Installed 29 April 1958 **Seven Units Only**
Last Seen: Late 1970's



Mr. Leon Gelman,
Barrister and Solicitor,
133 Richmond Street West,
TORONTO 1, Ontario



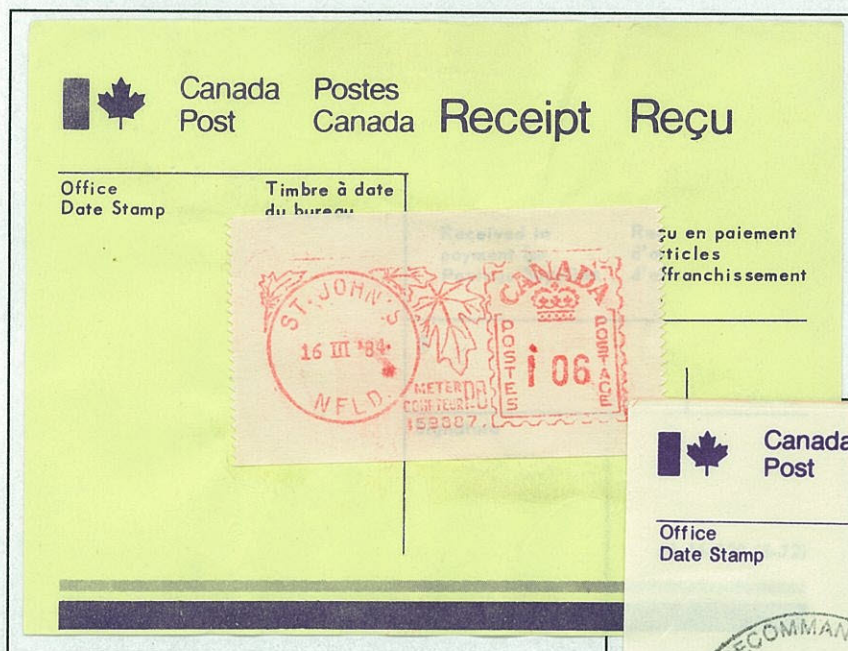
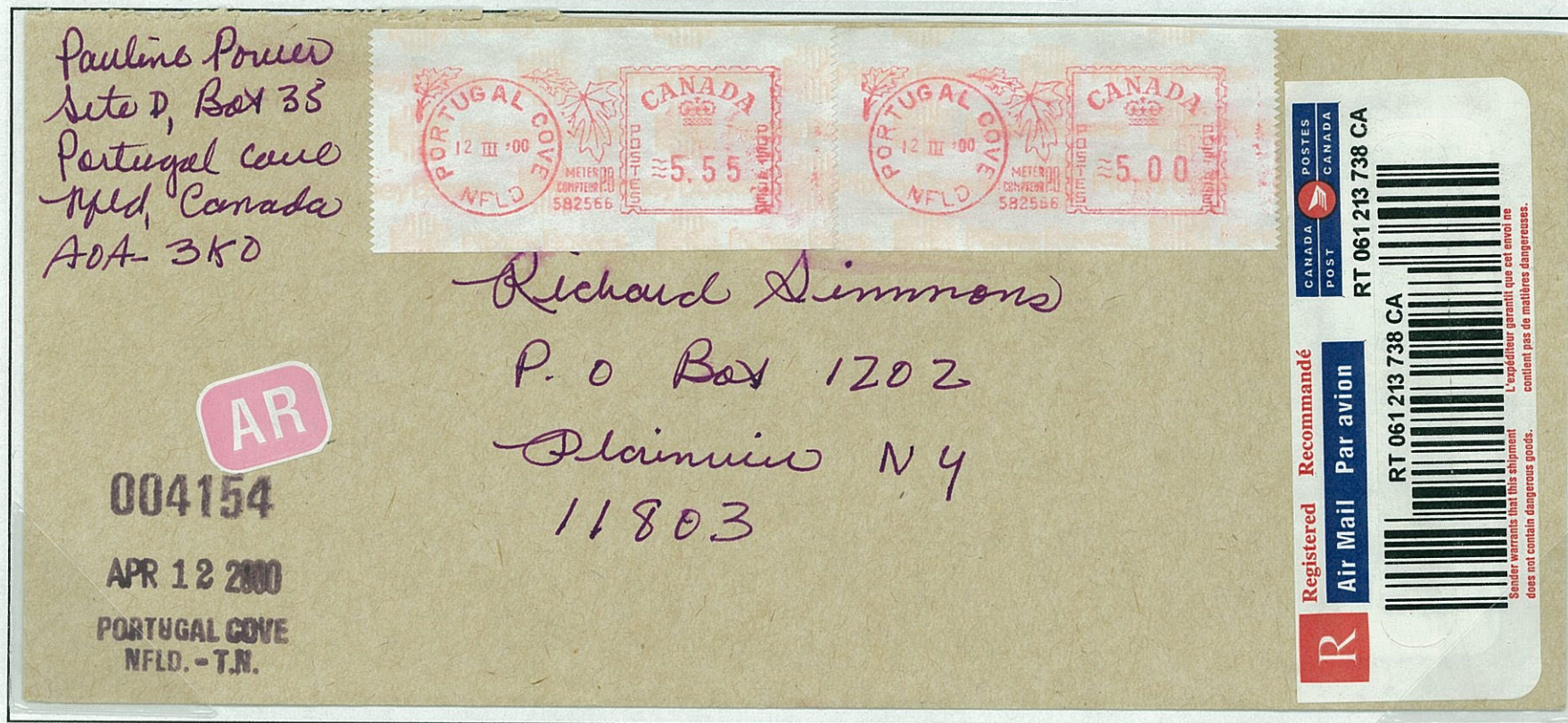
Large Maple Leaf with Postage Due slug.
Very Common Slug.
Usage: Early 1950's. Phased out in 1980's.



Large Maple Leaf
Vertical Slug: "Postage Due/Depot 1/Calgary"
Meter: 143590 **One Unit Only**

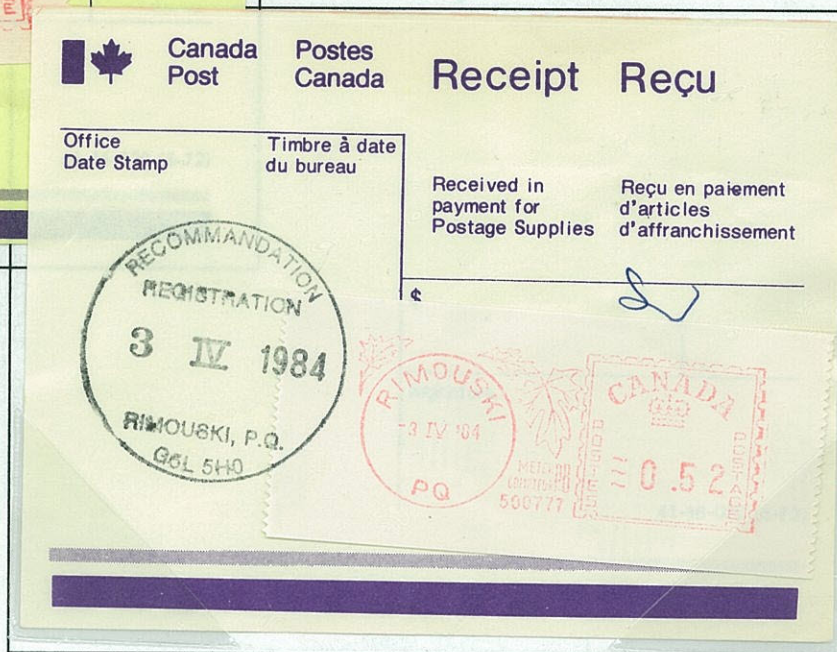
**Postage Due Slugs Phased out in 1970's
Unmarked Postage Meters Used.**

1.5.1 First Pitney Bowes Maple Leaf
Post Office Meters



Late use Post Office meter for Registered letter with return receipt on reverse.

Post Office meters used on Postal Receipt



National Brake & Clutch Service

199 ALBERT STREET
OTTAWA, ONTARIO



West Coast Woods,
1410 S.W. Merison, Room 804,
Portland 5,
Oregon,
U.S.A.

**1.5.1 First Pitney Bowes Maple Leaf
Post Office Meters**



**Large Maple Leaf Indicia
Mail-o-mat**

Two Pitney Bowes Mail-o-mat postal vending machines were placed at the Ottawa post office from February 3, 1944 until August 6, 1953. They were also used at the Canadian National Exhibition in Toronto in September 1947. Two units used: meters 51009 and 51010.

**Advertising Postcards
English and French**



Le "MAILOMAT"

... est une boîte à lettres payante pour ceux qui ont des lettres à poster—mais qui n'ont pas de timbre. C'est une espèce de "bureau de poste automatique" qui poste vos lettres non affranchies.

Pour poster une lettre, (1) déposez votre pièce de monnaie à l'endroit désigné, (2) signalez le montant exact de l'affranchissement et (3) insérez votre lettre dans l'ouverture aménagée à cet effet. L'appareil fera le reste: il prendra automatiquement votre lettre, y imprimera le timbre et le scellera postal et la conservera jusqu'à ce qu'on l'enlève. L'appareil imprime des timbres de 1c. à 33c., y compris les timbres de poste aérienne, de livraison spéciale, etc., sans charge additionnelle d'affranchissement.

Essayez dès maintenant ce service postal sans affranchissement. Servez-vous de cette carte pour dire un "bonjour" à l'un des vôtres en Service. Quand vous utilisez la poste ces jours-ci, à la maison ou au bureau, n'oubliez pas de poster tôt et souvent... afin de libérer le service postal en faveur de la correspondance de guerre... et pour aider le Bureau de poste à vous aider!

POST CARD

Please do not write directly below.

Free in
"Mail
in Ca

CARTE POSTALE

N'écrivez pas dans l'espace ci-dessous.

Carte postale gratuite d'instructions.
Postez dans le "Mailomat" pour 3c. à destination de tout endroit au Canada et aux Etats-Unis.

Espace réservé aux souhaits

Espace réservé à l'adresse

You SERVE by SAVING
Buy *WAR SAVINGS CERTIFICATES*

You SERVE by SAVING
Buy *WAR SAVINGS CERTIFICATES*



1.5.1 Pitney Bowes Postal Rate Card

The Pitney Bowes "Postal Slide Guide"

Postage meter vendors always provided some sort of postal rate guide, usually in table form, to assist selection of the correct rate. This slide calculator from Pitney Bowes was better than the usual guide, and this calculator was not seen often.

This guide was printed in 1961 and most of the first class, air-mail and foreign rates were in effect from 1954 to 1964.

Parcel Rates Calculated
On Reverse Side of Card

SURFACE AND AIR PARCEL POST RATES									
From NEWFOUNDLAND to 10 oz Weight	From N.S.-N.B.-P.E.I. to 14 oz Weight	From QUEBEC to 3 lb Weight	From ONTARIO to 7 lb Weight	From MANITOBA to 11 lb Weight	From SASKATCHEWAN to 15 lb Weight	From ALBERTA to 19 lb Weight	From BR. COLUMBIA to 23 lb Weight	From YUKON to 27 lb Weight	From U.S.
Nfld. .11	N.S. .21 N.B. .21 P.E.I. .21	Que. .39	Ont. .71	Man. .84	Sask. 1.03	Alta. 1.35	B.C. 1.85	Yukon 2.25	U.S. .11
N.S. .40 N.B. .40 P.E.I. .40	Que. Nfld. .21	Ont. N.S.-N.B.-P.E.I. .41	Man. Que. .54	Sask. Ont. .23	Alta. Man. 1.64	B.C. Sask. 1.90	Yukon Alberta 2.25	B.C. Alta. 1	
Que. .50	Ont. .50	Man. Nfld. .50	Sask. N.S.-N.B.-P.E.I. .58	Alta. Ove. .54	B.C. Ont. Yukon 1.54	Yukon 2.35	Sask. 2.80	Alta. Sask. 1	
Ont. .55	Man. .28	Sask. .56	Alta. Nfld. 1.12	N.S.-N.B.-P.E.I. 1.68	Yukon 2.24	Ont. 2.70	Man. 3.18	Sask. Man. 1	
Man. Sask. .55	Sask. .30	Alta. 1.70	B.C. Yukon 1.20	Yukon Nfld. 1.94	N.S.-N.B.-P.E.I. Nfld. 2.54	Que. 3.19	Ont. 3.58	Man. Ont. 1	
Alta. B.C. Yukon .40	Alta. B.C. Yukon .30	B.C. Yukon .62	Great Britain 1.25	Great Britain 1.25	Great Britain 3.25	Great Britain 4.25	Great Britain 4.25	Great Britain 4.09	
Great Britain .40	Great Britain .43	Great Britain .85	U.S. 1.30	U.S. 2.25	U.S. 2.25	U.S. 3.25	U.S. 4.09	U.S. .11	

CANADA—Add 1c for each ounce of excess weight over the even pound until the next pound rate is reached.
 GREAT BRITAIN—UNITED STATES—1 lb. 1 oz. requires 2 lb. rate.
 Example: 1 lb. 1 oz. requires 2 lb. rate.

SURFACE PARCEL POST
 AIR PARCEL POST

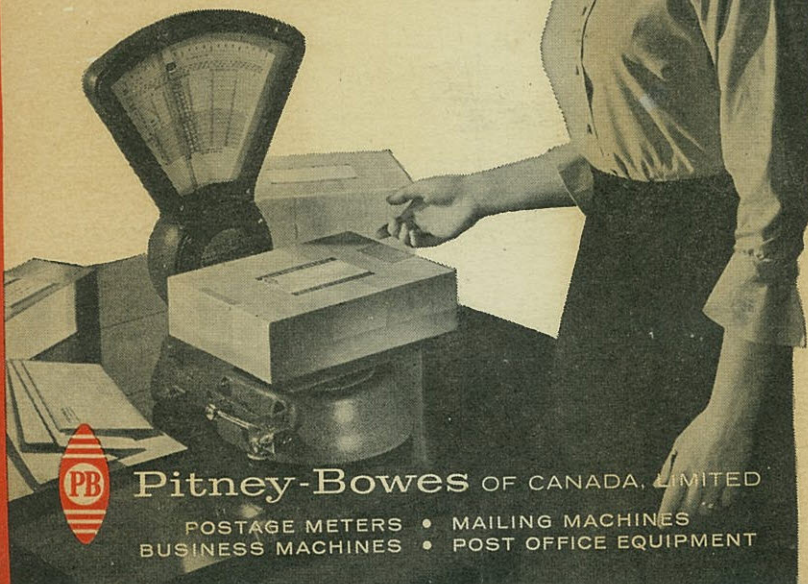
CANADA—Add 5c for each ounce of excess weight over the even pound until the next pound rate is reached. Consult Postmaster for parcel rates.

dressed to an office served by an air stage route. CANADA—Add 40c for each additional four ounces over the even pound.

†Surface and Air rates between Yukon and Alta., Sask., Man. are not combined in one window. Where (†) appears read Air rates only. Where (*) appears read Surface rates only.

"Postal Slide Guide" calculates many postal rates. ca1961.

Cut postage costs
save mailing time with
Pitney-Bowes
precision MAILING SCALES



Pitney-Bowes OF CANADA, LIMITED

POSTAGE METERS • MAILING MACHINES
BUSINESS MACHINES • POST OFFICE EQUIPMENT

Letter Rates

REGISTRATION

(In Canada only)

All classes of mail (except Parcel Post) posted in Canada for delivery in Canada may be registered at the following rates:

For	\$25.00	.20c
indemnity	\$50.00	.30c
not	\$75.00	.35c
exceeding	\$100.00	.40c

Consult Postmaster for rates to other countries.

POST CARDS

Rate..... .04c

SPECIAL DELIVERY

Special Delivery service can be given on letters mailed to nearly all cities in Canada, United States and United Kingdom (obtain list from Postmaster).

Extra Fee..... .10c

★ CANADA (over 8 oz.) ordinary domestic FIRST CLASS rate applies up to and including eight ounces.

PARCEL POST ON BACK

WEIGHT (ounces)

4	14	15	16
.10	.30	.32	.34
.14	.44	.47	.50
.18	.58	.62	.66
.22	.67	.72	.77
.22	.77	.82	
.80	2.40	2.60	2.80
1.20	3.00	3.20	
1.20	4.20	4.50	4.80
2.00	7.00	7.50	8.00
.03	.08	.09	.09

.20

AIR MAIL

(10c per 1/2 oz.)

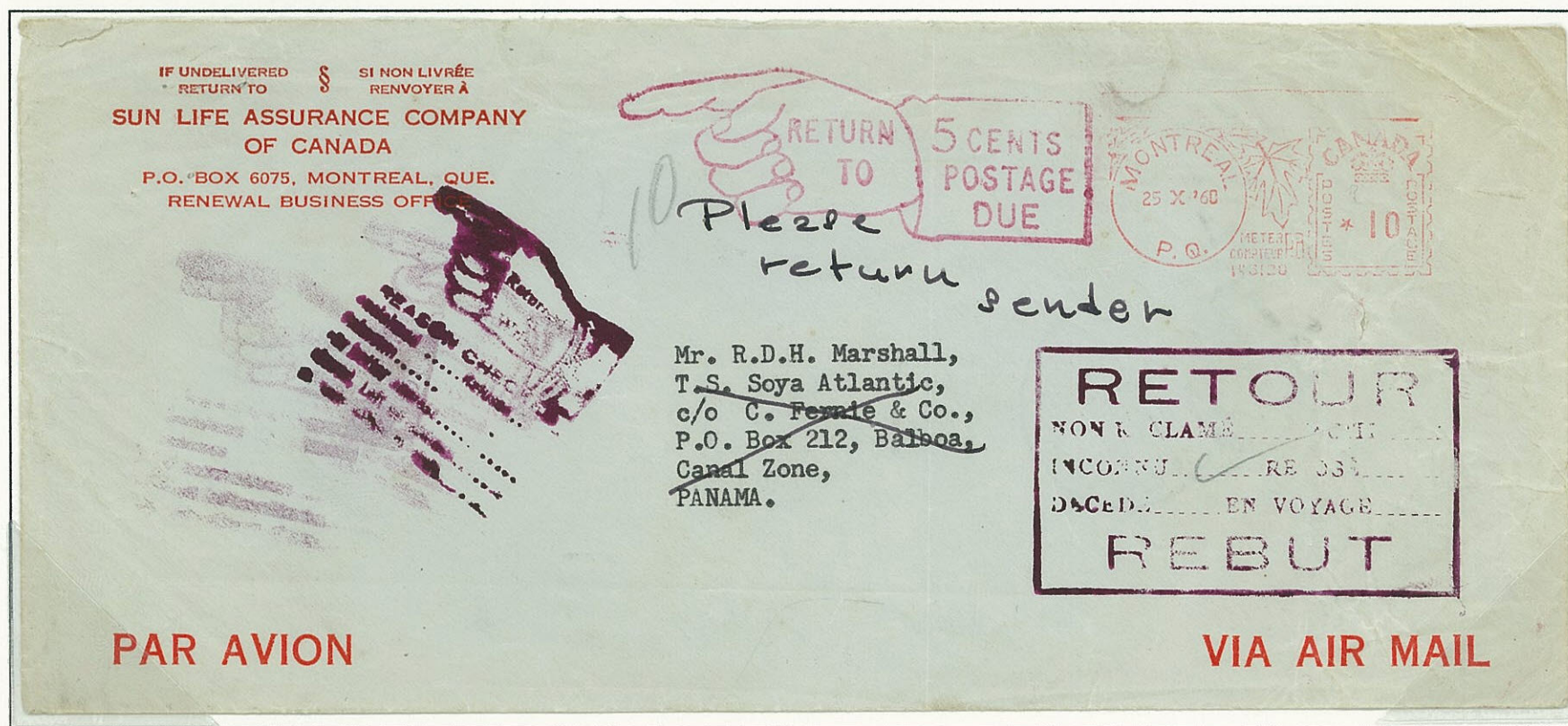
Bermuda—West Indies
Central and South
America—Mexico

50 1.8

Quebec to Panama 1960

Airmail 10¢ per 1/2 oz

To South America

1.5.1 Pitney Bowes Postal Rate Card**The Pitney Bowes "Postal Slide Guide"**
Postage Calculations for Two International letters.

.22

AIR MAIL★ Canada (over 8 oz.)
United States and
Possessions**Quebec to USA 1961**

Airmail 22¢ for 4 oz

7¢ first oz, 5¢ additional oz.

To Canada and USA



Why Bob Pichette uses a Pitney Bowes postage meter for as few as 5 letters a day.



Twelve years ago, Bob Pichette set up his own business in LaSalle, Quebec, as a photographer. Since then, it's become his way of life! He married a photographer, their home became their studio, and as leading photographer in his community, he's on call at all hours. It's even made him something of a philosopher. "Nobody," he says, "nobody is really ugly." And he has pictures to prove it.

To business. About a year ago, some of Bob's mail went out with insufficient postage. Irritated, Bob looked around for a way to prevent this happening again. He decided to get a Pitney Bowes postage scale to make sure his mail would be weighed accurately. And while he was at it, he ordered a postage meter as well.

Bob got the meter simply to ensure having the correct postage on hand at all times—but to his delight, he found he'd got a whole lot more than he bargained for.

For a start, he's able to cut down on

trips to the Post Office—and no more scrambling to get there before its doors close. What's more, he has a ready record of all the postage he used (a help to his accountant at tax time!).

Another useful thing for Bob is the fact that the meter postmarks all postage. If Bob tells a client he will "mail the photographs by Thursday," he has the dated metered stamp to prove that he did.

Bob even feels that, indirectly, his postage meter helps him sell more pictures. For example, if he covers a wedding on Saturday, he can have sample pictures ready by Sunday. And being independent of the Post Office, he can send them out right away so his potential customers get them by Monday—which is so soon after the happy event, that they are in a good mood to buy.

And Bob has one more benefit to come from his meter. Remembering the advice received from one of his teachers "make sure people know you," Bob is busy devising his own little ad. And

his Pitney Bowes postage meter will be happy to print it for him, right beside the postage.

If the story of Bob Pichette, his postage scale and his meter makes you think you might have some use for them too, please call us and our demonstrator will come running to show what we can offer.

For more information write Pitney Bowes of Canada, Ltd., Dept. 0253, 909 Yonge St., Toronto 285, Ontario or call one of our 47 offices across Canada. Postage Meters, Mailing Equipment, Copiers, Counters and Imprinters, Addresser-Printers.



Pitney Bowes

Because business travels
at the speed of paper.



1.5.2 Pitney Bowes Small Maple Leaf

Smaller Indicia Designs:
July 1949.

Used with Small Desk
Model

FV: 00

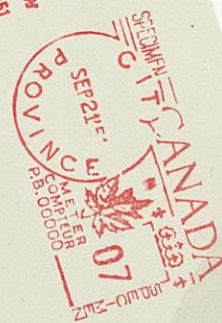
Value: MV 1¢ to 21¢

Meters: 24000+

Original design: French
"Postes" at left.

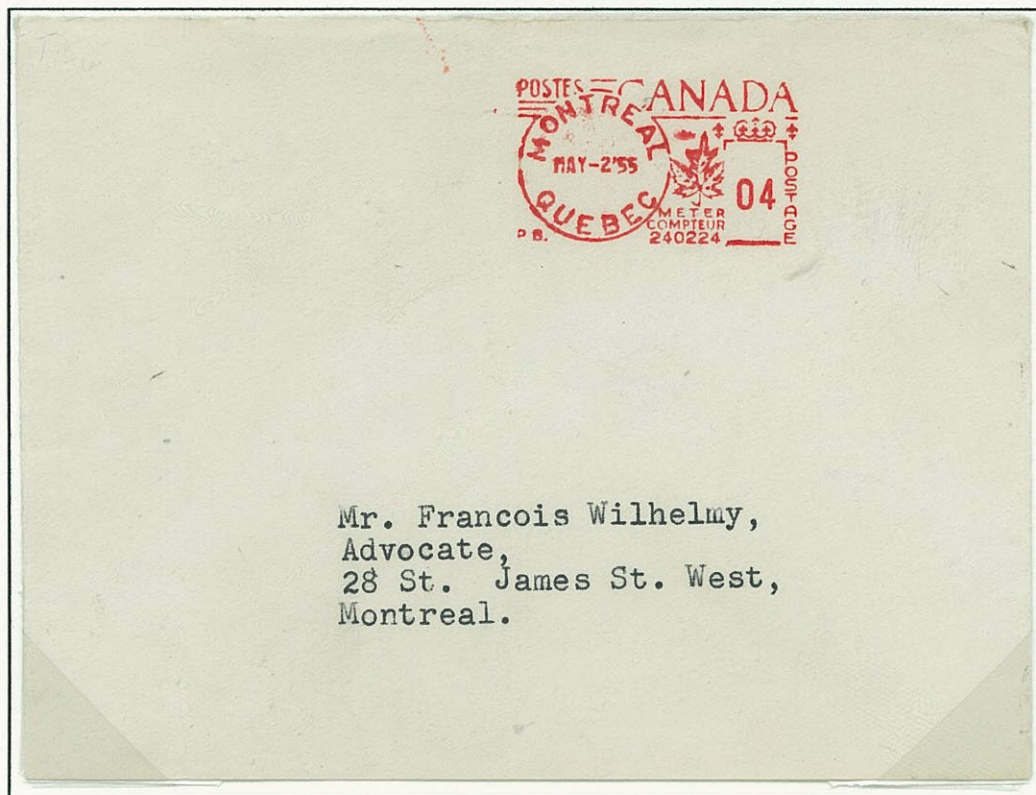
Design modified in 1950.

Used until 1995.



Time Magazine
ca 1965

1.5.2 Pitney Bowes Small Maple Leaf



“Postes” Separate

FV: 00

Value: MV 1¢ to 21¢

Meters: 24000+

“Postes” at upper left.

“Postage” vertically at right.

Earliest Known 19 Nov, 1949

Approx. 700 Units until 1983.

“Postes” and “Postage” with Value

FV: 00

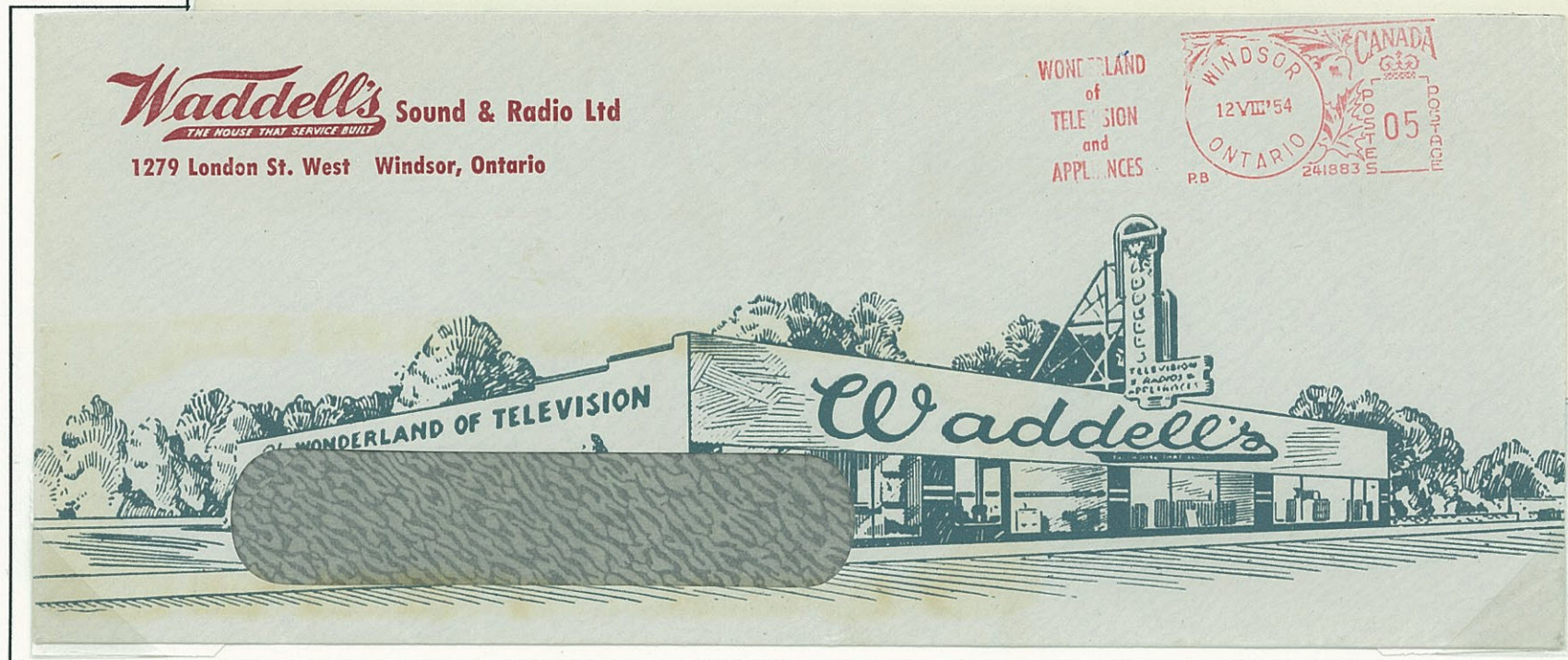
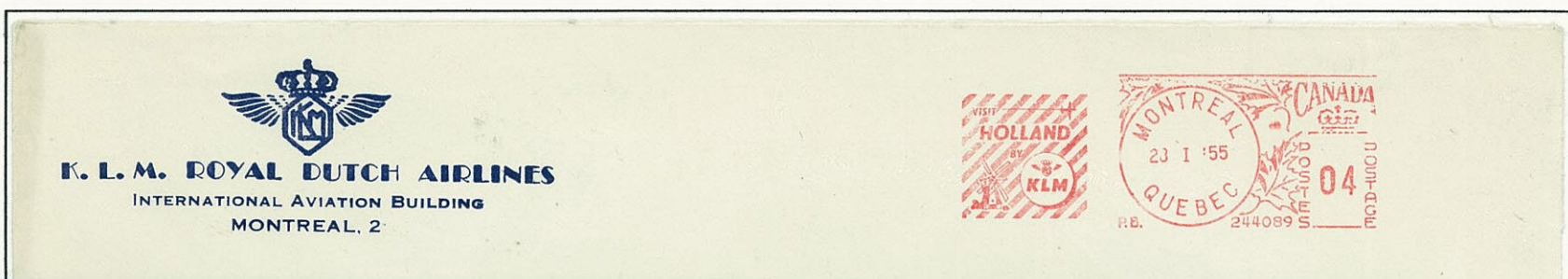
Value: MV 1¢ to 21¢

Meters: 24000+

“Postes” and “Postage” vertical.

Earliest Know Use 13 Nov, 1950.

Used until 1995



1.5.3 Third Pitney Bowes Maple Leaf

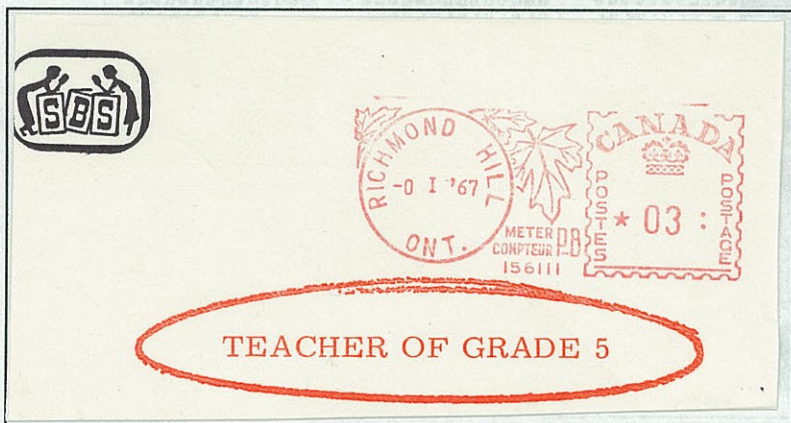


FV: *00:
Small Star.
2½ mm colon

Third Maple Leaf
Larger 20 x 22mm value frame.
Introduced 1956. Obsolete 2002.
Meters: 15600-16300
Value: OV ½¢ to \$9.99½.

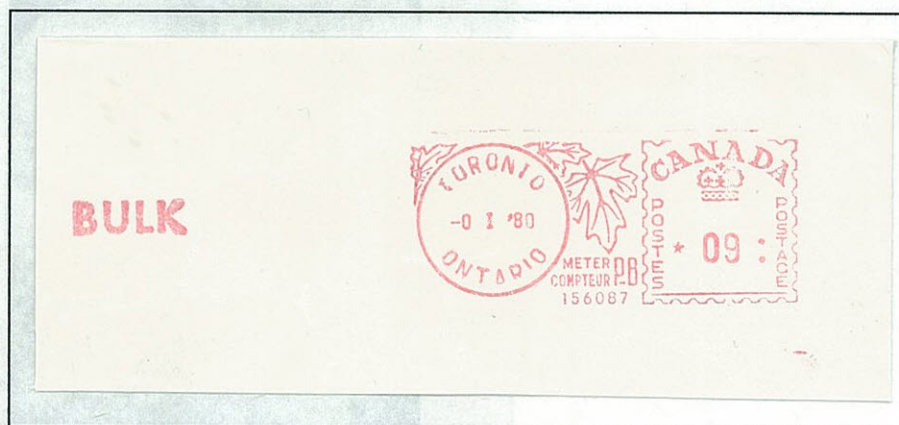
Fractional Postage Rates

The colon seen after the value indicates the meter can print fractional values (½¢ and later digial) for bulk mail rates.



FV: *00:
Larger Star.
2½ mm colon

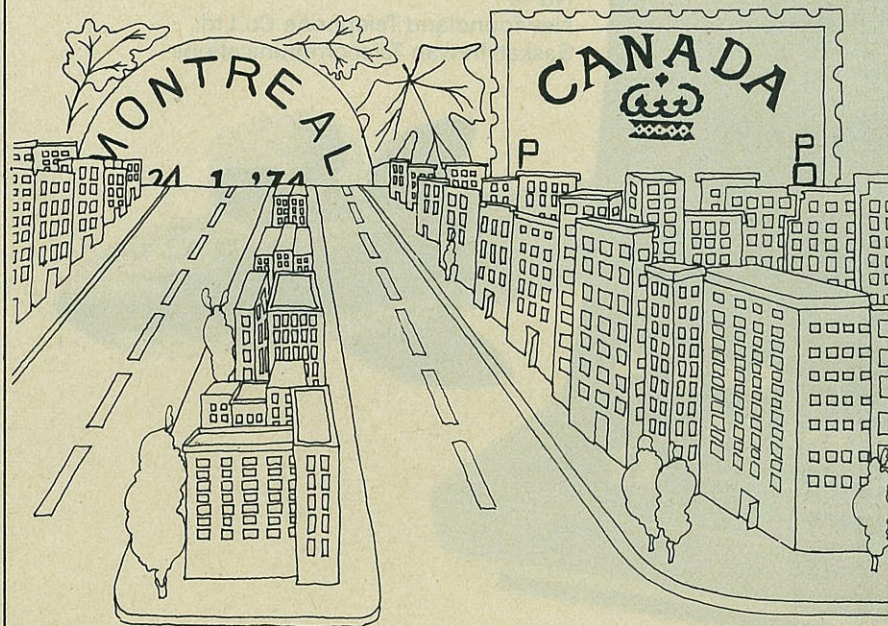
FV: *00:
Small Star.
3½ mm colon
While common in the US this size is hard to find in Canada.



FV: W 00:
Triad Wavy Lines at left
4½ mm colon



Is today the date your postage meter indicates?



Canada Post
Postes Canada
André Ouellet, Minister
André Ouellet, ministre

1.5.3 Third Pitney Bowes Maple Leaf



Fractional Postage Rates

The triad of wavy lines indicated that the meter could print fractional bulk postage rates.



FV: *00W

Value: OV ½¢ to \$9.99½

Variations in the wavy lines.



The Sheraton Centre

SHERATON HOTELS & INNS, WORLDWIDE
123 QUEEN STREET WEST, TORONTO, ONTARIO M5H 2M9



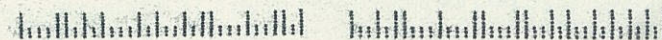
ANN EGAN TVL

5TH AVE & SMITHFIELD
PITTSBURGH, PA 15222

P.O. Box 7021
Adelaide P.O.
Toronto, Ontario
Canada M5C 2K7



BY AIR MAIL
PAR AVION



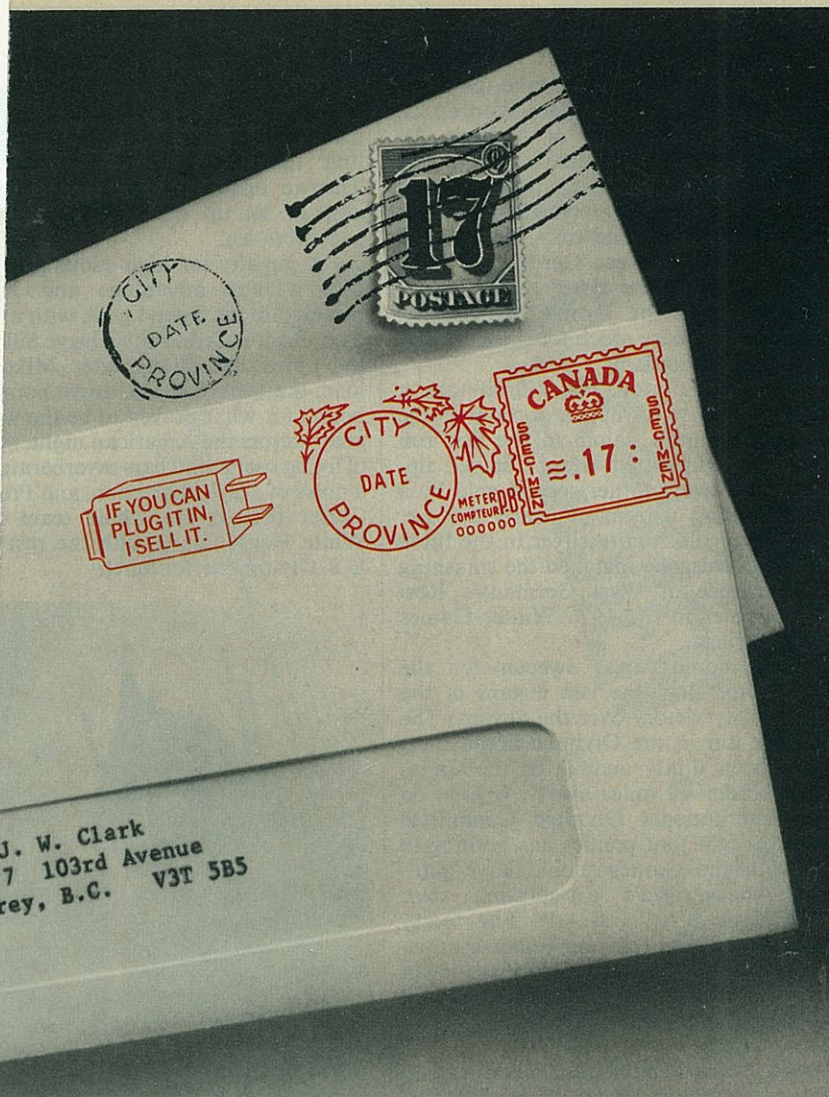


Two Cannot Print Fractional Values.



Two Print Fractional Values.

Four Figure of Value Variations.



Mr. J. W. Clark
13777 103rd Avenue
Surrey, B.C. V3T 5B5

Which would you open first?

Notice how the envelope imprinted with the Pitney Bowes postage meter stamp looks more professional and no-nonsense than the other one. But Harry's TV switched from postage stamps to metered mail for many more reasons than just looking big and business-like. For example: Whether Harry sends out 5 or 500 letters a day, he'll always have the exact denomination on hand, which saves him from extra trips to the post office. He'll never lose or tear a stamp, never lick one again, and he'll always have an accurate record of all his postage costs, automatically, all year long.



With the meter stamp, Harry even has a professional looking sales message on every envelope he sends out. And, the meter stamp even helps to get his mail through the post office faster because it doesn't have to be dated, cancelled or post-marked. And Harry never has to guess how much postage to use since he added a Pitney Bowes

precision postage scale. Pitney Bowes can provide expert service for both from more than 60 locations throughout Canada. And free mailing consultation from our experts. The meter stamp. Because before they read your letter, they read your envelope.

 **Pitney Bowes**

For more information, write us: Pitney Bowes of Canada Ltd., Dept 0251, 150 Ferrand Drive, Don Mills, Ont. M3C 3B5, over 60 offices across Canada. Postage Meters, Mailing Systems, Copiers, Collators, Addresserprinters, Counters and Imprinters.



1.5.4 Fourth Pitney Bowes Large Maple Leaf

Fourth Maple Leaf Design Introduced 1959.

Obsolete 2002.

High volume machines.

Value Frame 23x22mm

Value: OV \$9.99⁹ \$99.99⁹

FV: W(long).00, W0.00,

W.00W and W.00:

Meters: 500000+

PITNEY BOWES OF CANADA, LTD.

Specimen Pitney Bowes Model 5300 Series



Time Magazine
March 3, 1980

Specimen Prints

A "specimen" is generally a print with a production indicia that has been altered to show it is not intended for postage. It might be used as a demonstration for a customer or in an advertising packet.

1.5.4 Fourth Pitney Bowes Maple Leaf



CANADA POST OFFICE  POSTES CANADIENNES

POSTAGE METER READINGS INDICATIONS DES COMPTEURS D'UNE MACHINE À AFFRANCHIR

BLOCKS MUST BE COMPLETED BY POSTMASTER
A REMPLIR PAR LE MAÎTRE DE POSTE

POSTAGE METER No.
N° DE LA MACHINE À AFFRANCHIR

PERIOD FROM TO
PÉRIODE DU AU

USER
UTILISATEUR

ADDRESS
ADRESSE

POSTAGE FOR THIS METER MUST BE PURCHASED AT:
BUREAU DE POSTE D'ATTACHE
(OÙ DOIVENT ÊTRE ACHETÉES LES EMPREINTES)

SETTING OFFICE No.
N° DU BUREAU

POST OFFICE
NOM DU BUREAU

ADDRESS
ADRESSE

WARNING

THIS BOOKLET IS VALUABLE AND
MUST BE KEPT IN A SAFE FIREPROOF
PLACE AND PRESENTED AT POST
OFFICE WHEN PURCHASING METER
IMPRESSIONS.

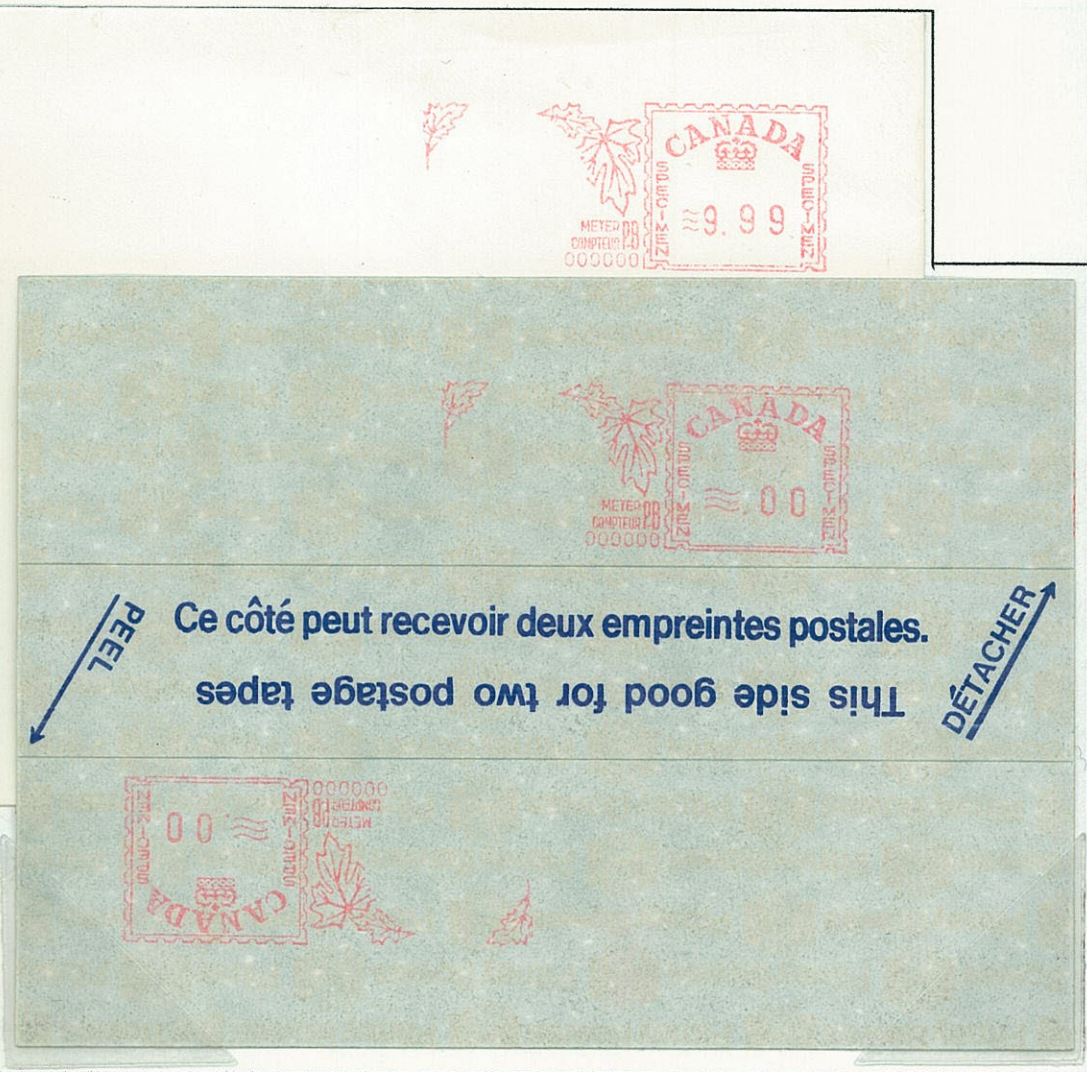
AVERTISSEMENT

LE PRÉSENT LIVRET EST PRÉCIEUX.
LE GARDER DANS UN ENDROIT SÛR
ET À L'ÉPREUVE DU FEU. L'APPORTER
AU BUREAU DE POSTE À CHAQUE
ACHAT D'EMPREINTES.

The user of the postage meter must enter in the spaces provided, the readings of both the ascending and descending registers and the total thereof at the close of business each day.

L'utilisateur de la machine doit, chaque jour, à la fermeture de son établissement, inscrire dans le présent livret les indications du totalisateur et du soustracteur et leur total.

SEE INSTRUCTIONS INSIDE
VOIR LE RÈGLEMENT À L'INTÉRIEUR



Postage Accounting Book

This booklet, used in the 1970's, is similar to booklets provided to meter users for account record keeping. The book was to be inspected by the post office as postage was added to the meter.



Mail Band

Mail bands like this one were provided to keep certain types of mail separated to facilitate sorting.

Single Circle
Townmark

Value Frame

1.5.4 Fourth Pitney Bowes Maple Leaf



Value-Omnidenomiatonal

Single Line Date

Meter Number

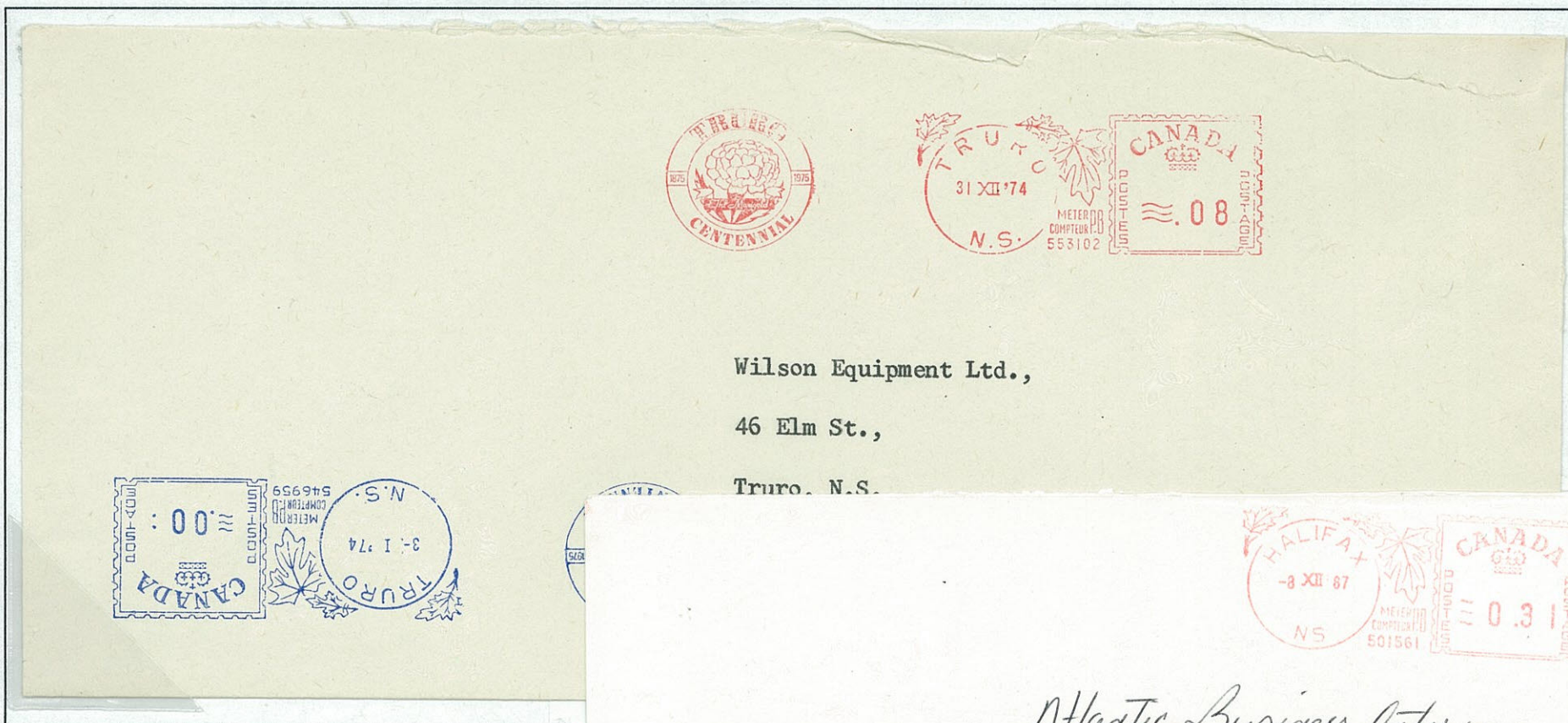
Two Meter Designs Could NOT Print Fractions

FV: W .00 (Long wavy lines)

Value: OV to \$9.99

FV: W0.00 (Short wavy lines)

Value: OV to \$99.99



Wilson Equipment Ltd.,

46 Elm St.,

Truro, N.S.



Atlantic Business Enterprises
P.O. Box 8240 Stn. A.
Halifax, N.S. B3K 5L9

Cover above shows proper re-dating with a zero strike. Redate with a different mailing machine

Cover to right was distributed for use at a special "Christmas Message" 31 cent rate within Canada.

ABCDEFGHIJKLMNPRSTVWXYZ 0123456789

ABCDEFGHIJKLMNPRSTVWXYZ 0123456789

ABCDEFGHIJKLMNPRSTVWXYZ 0123456789

