

Wincor-Nixdorf and Hytech ATM Stamps

**First Edition
2013**

John McCallum

Wincor-Nixdorf and Hytech ATM Stamps

Edition 1 (2013)

-0-

Disclaimer

The content of this work is aimed at those interested in collecting ATM (or CVP) material for recreational purposes and not for business or investment reasons. The information contained on these pages is believed to be correct at the time of publication and is intended as a guide to collectors of this material. I do not accept any liability for the use or mis-use of the data for financial gain or any other business purpose.

If any of the data from this publication is used elsewhere (hard copy or electronic), please acknowledge it appropriately.

Restrictions

You may store the file containing this document electronically or transfer it to other media such as i-pad or tablet systems or as a printed out hardcopy.

You may pass on copies to others but those copies must be complete including the charity request. This edition must **NOT** be sold.

Request

While preparing this document, a few people have indicated that I should sell copies to cover costs. I have considered this suggestion and it has its merits. However, after asking advice on how to go about publishing, I have decided that the most appropriate way to publish would be electronically.

I do not have a pay pal account and I do not want the problems associate with printing, binding, posting out and collecting a payment. Therefore, rather than offer it for sale, I have decided to make it available free of charge (almost).

However, I have a request. If you download a copy or receive a copy by e-mail or from others, I would appreciate a donation to one of the many charities dealing with neurological conditions. These conditions include Multiple Sclerosis (MS), Parkinson's and Stroke. They destroy lives and can affect anyone from street cleaners to professors.

Since the middle of 2010, I have had to give up work to care for a loved one with MS. This is a full time occupation ensuring her wellbeing as well as dealing with a series of problems caused by certain official organisations in obtaining the appropriate assistance.

Therefore, if you like the catalogue and feel that it is worth something, I would be pleased if you would make a donation to an appropriate charity such as the Multiple Sclerosis Society, the Parkinson's Society, Integrated Neurological Services, Stroke, etc or the equivalent wherever you are. The amount that you donate is up to you. Their addresses may be obtained from the internet. The web addresses in the Britain are:

www.ins.org.uk
www.mssociety.org.uk
<http://www.parkinsons.org.uk>
<http://www.stroke.org.uk>

It is probably too late to cure my other half but every little helps in finding treatments which may enhance lives.

Thank you.

About the Author/Compiler

John McCallum has been the editor of the *Postal Mechanisation Study Circle Newsletter* since 1997. In 2013, he put together the first issue of the *ATM Informer* which is a newsletter/journal for those interested in collecting Wincor-Nixdorf and Hytech stamps and labels as issued by Royal Mail.

He has published a number of items in the Postal Mechanisation Study Circle journal, *Ident*, as well as an article for the Meter Stamp Society journal.

Previously, he has published in academic journals including *Analyst* and *Analytical Chemica Acta*. He edited two newsletters for the DTI on sensor technology.

His interest in these faststamps and labels commenced when he received an example from Doncaster and three kiosks were installed at a main post office close to where he lived. At the time, the interest was limited to reporting in the *Postal Mechanisation Study Circle Newsletter* but soon turned to a more comprehensive study.

John is a qualified analytical scientist but is now registered as a carer with the local authority. He looks after his partner on a full time basis.

He may be contacted at pmechuk@gmail.com.

Wincor-Nixdorf and Hytech ATM Stamps

John McCallum

For the past few years, I have been compiling data on the Wincor-Nixdorf and Hytech ATMs (CVP – Computer Vended Postage) with the view of documenting their usage. To date, my findings have appeared in the *PMSC Newsletter* and, since the amount of data has got to the stage where periodic reproduction of the updated data table would take about 40 pages, I continually update session numbers on my pmechuk website and support it with the material from my personal collection on five others (pmechuk1, pmechuk2, wincoralbum1, wincoralbum2 and wincoralbum3). There is also a blog under the title pmechuk.blogspot.com.

However, I have reached the stage where I feel that a catalogue or listing is now required to assist collectors coming into this area of collecting along with the more established. Therefore, I apologise to the more advanced collector if, at present, sub-sub-types based on slight variations in the set up of the kiosks are not yet included but I am willing to consider their inclusion in the future.

Gibbons has started to include the Faststamps but not the Post and Go labels in their catalogue. However, I feel that there are some deficiencies in their approach. For example, the Gibbons catalogue codes FS1-5 as corresponding to the five service values on the Machin heads with the large font (font 1) data strings, FS1a-5a is allocated to the same set but with the smaller font (font 2) which seems logical but FS6-10 are allocated to the first Bird pictorial set which has six stamps in the set but only five Gibbons numbers. I can only assume that these will continue to correspond to the service rather than the picture. Dealers regularly offer sets - collectors strips - with each “value” printed on each pictorial. Initially these were 30 stamps in total but with the introduction of a new Worldwide rate, this is now 36 stamps.

To alleviate these shortcomings, I have put together a listing of varieties that are out there and collected. Most of the common varieties in circulation arise from the “collector’s strips” that are being promoted by dealers and Royal Mail. Others have arisen from intermittent faults and some from programming errors. There are known examples where the security overprint at the bottom of the Machins is missing as the stamps were mis-cut when the roll was being prepared at the printers. These are included.

I have included both and Hytech examples of faststamps. This is because both machines used label/stamp stock to produce the stamps. Hytech machines may be identified from the double digit kiosk identification number in the data string (21, 22, 91, 92, 93 and 94 have been used at Stampex). More recently, the kiosk ids on the Hytech machines have been changed to an alpha-numeric pair (A1, A2, A3, A4, B1, B2, C1 and C2). Hytech has also been used as the standard for Royal Mail presentation packs. Wincor-Nixdorf kiosks have a single digit identifiers.

Peter Morton has pointed out that with the machin head early printings, in addition to normal phosphor bands, there are short bands, inset bands and interrupted bands which are worthy of a separate listing. Likewise Birds 1 also had a printing of all 30

stamps with short bands at the top. I have ignored these for the moment as I have not researched this aspect of these stamps but will be considered in an update.

I would welcome reports of new varieties, preferably with a .jpg image, for inclusion in a future version of this listing.

I do have concerns about some of the claims made on e-bay over the scarcity of items when in fact the items offered are the “norm” for that item and were bought in relative bulk by dealers and those seeing an opportunity for quick and relatively large profit. Therefore, the time may be right to catalogue the material and leave it to the reader to decide on its legitimacy.

I hope that the format that I have chosen to use is seen as simple and easy to understand. The first column is the number that I have assigned to the stamp in an approximate chronological order. This is followed by the Gibbons number and a brief description of the stamp. The font version comes next. The “official” first day that stamp was issued is listed by the illustration of the stamp. As noted, some of the varieties were transient in nature. Some of the Bird pictorials “escaped” before the official first day. These early dates are not included here.

I have used examples from my collection to illustrate the basic versions but for some of the varieties, I have resorted to images from e-bay and the kindness of others.

One other aspect which is impractical would be to expand the listing so that each stamp variety could be listed by each post office ident. This would mean the listing could run to over 175000 just for the faststamps and around 7500 Post and Go varieties! In addition, there would be over 200 “first” days for just the original Machin Faststamps alone as the machines became operation over the period from October 2008 to date and not all machines issued the pictorials on the official first day – some did so before the event and some after. This would give a catalogue the size of a telephone directory! As it stands, the listing runs to over 700 faststamps and around 30+ PAGs projected to the end of 2013. The projections for 2013 are based on data released by Royal Mail and reported on www.postagelabels.com.

It is my hope, at some point, to develop this catalogue into a more comprehensive work on these stamps/labels giving some background to each issue and its availability. I would also hope to include information on each office and kiosk but that sort of material is a massive work in progress.

Therefore, for the present, I submit this catalogue for comment, suggestions, corrections and additions.

Kiosk Types

A number of vending machines have been trialled for use in the UK. Between 1984 and 1985, a short lived experiment using four Frama machines was held at Cambridge, Windsor, Southampton and London EC. In the early 2000s machines from have been trialled such as units from Samkyung Hitech, Pitney Bowes and Fujitsu.

It is not my intention to cover these machines in this work but may consider their inclusion in a future edition.

Wincor-Nixdorf

In October 2008, the first of the Wincor-Nixdorf kiosks became operational at the Galleries in Bristol before being rolled out around the country. Two basic variations of the machines are in service – card payment only unit and a card/cash payment unit.

Originally, four card only kiosks were in service and were at Tudor Street London EC. Kiosk 4 was removed and reappeared at Tesco Brent Park London NW10. Two kiosks were subsequently modified to card only payment at Croydon.

Most kiosks are card/cash payment units.



Kiosks 1-4 at Tudor Street, London with units 3 and 4 covered during repainting of the office. Kiosk 4 was removed shortly afterwards and moved to Brent Park Tesco NW10 OTL.



Normal Wincor-Nixdorf kiosk with card and cash payment facilities.



On occasion, one may be fortunate to have a sighting of the internal workings of the kiosks. With some patience, one can work out the various modules but this is outside the scope of this work

Hytech Kiosks

Four different designs have appeared at Stampex including the desk top version shown here. This is the type of unit used to produced the dealer's stock at the events and, currently, have the identifiers B1 and B2.



The public kiosks are stand alone units. The original unit is below left. It was modified as the result of the pulling of the stamp strip to produce variations by the addition of a cover over the delivery slot. A final version has now appeared and is shown below right. Four of this type of kiosk are in service (A1-A4).



Two other units exist to produce bulk stock for first day covers (C1) from rolls and presentation packs (C2) from sheets.

Internal view of the lower section of A1.



Standardising Terms

With each speciality comes a whole set of nomenclature specific for that field of study and it often leads to confusion when discussing interests with others even within that speciality. I would like to make a start in defining these terms to reduce this confusion.

Faststamps This was the original term used by Royal Mail to describe the Machin stamps vended by the Wincor-Nixdorf kiosks and was extended to include the subsequent pictorial issues. In these pages, and other publications that I produce, this will be the definition of the term that I will use. However, these have been described as Post and Go Stamps in the philatelic press and by Royal Mails as these are seen as stamps which can be bought and used without time limit. The reason for use of the Post and Go term results from the advertising of the presence of the kiosks at post offices.

Post and Go Labels This has been used to describe Horizon like labels from two previous machines – the Fujitsu and the Pitney Bowes trialled between 2007-2009. The term continued in use with the Wincor-Nixdorf machines to describe, initially, the Horizon style labels and then the Smartstamp style versions. These labels have to be used by the day after purchase and are so dated. I will be using the term PAG or Post and Go to describe this type of label.

Datastring Along the bottom of vended faststamps and post and go labels is a line of numbers or numbers and letters (Hytechs from Autumn Stampex 2012). Wincor-Nixdorf kiosks datastrings consist of an office ident, kiosk number, session number and transaction number. Hytech datastrings now use a dater field, kiosk ident, session number and transaction number. Post and go label purchases have the letters “PAG” added between the kiosk ident and session number on the label.

Office Ident In Wincors, this is a six digit number that has been assigned to the office that the kiosk has been allocated to. For example, 015010 is Trafalgar Square/William IV Street office. If the machine is moved from one office to another, this ident is changed. Examples of kiosks where this has changed include Premier Old Hastings kiosk (002458) which was moved to Farrington Road, London (100003) and kiosk 4 from Tudor Street, London (242007) which was moved to Tesco Brent Park, London (074005).

Kiosk Ident Some offices have more than one kiosk and so there is a need to identify which kiosk at that office vended the stamp or label. With Wincor-Nixdorf kiosks this is a single digit. When Hytech kiosks have been used at fairs, etc., a two digit or alpha-numerical ident has been used e.g. 21, 22, 91, 92, 93, 94, A1, A2, A3, A4, B1 and B2. C1 and C2 have been seen on presentation pack stamps and FDCs.

Dater Field Since Autumn Stampex, the Office Ident has been replaced with a dater field. At this show, this field was A9GB12. The A was to indicate the reel that the stamp was sold from (either A or B – but was non-functional at the time), a month code (9=September), GB for the country code and 12 for the year code.

Session Number In Wincors, this is a five digit number and in the Hytech it is a six digit number. It indicates the number of times that someone has purchased stamps/labels or other items using that kiosk.

Transaction Number Within a session, one may purchase a number of stamps and labels as well as other items. Each purchase is numbered.

Horizon Labels These are the labels vended through the EPOS system at the post office counter. These were initially plain white labels with service, date, office ident, etc data. Later these were changed to a gold Machin design.

SmartStamps These are printed labels or a design directly printed on an envelope from a home computer. Postage is purchased on line from Royal Mail and a 2D bar coded “stamp” is produced.

Fonts Two basic font sizes have been used on the Wincor-Nixdorf kiosks – font 1 is a larger type than font 2. However, there is a strong argument to include a new “font 3” to describe the font used on the Hytech machines which is similar to but noticeably different to font 2 on the Wincor-Nixdorfs. There are also variations in the spacing and indentation in some of the overprints.

John Deering’s column in the January 2013 edition of Gibbons Stamp Monthly covers varieties in printing the text and font type used on the Cattle issue.

Faststamp and Post and Go Issues

Date of Issue/ Upgrade	Upgrade, Stamp and Label Versions
8 October 2008	Machin Faststamps from Bristol. Horizon Post and Go.
30 June 2009	Smart Stamp Post and Go being phased in.
September 2010	Upgrade to Font 2 at 31 locations.
16 September 2010	Birds 1 at limited locations. Font 2
24 January 2011	Birds 2 at limited locations. Font 2
April/May 2011	Upgrade to Font 2 throughout network ready for Birds 3.
19 May 2011	Birds 3 at most offices. Not available at Aldwych. Handful of offices released the faststamps early.
By September 2011	V2 upgrade allowing more service options and purchase of packaging etc. First used at Autumn Stampex. First office to use V2 was Broadway, SW1H 0AX (id010011) on 13/10/11.
16 September 2011	Birds 4.
14-17 September 2011	Machin 1911-1999 commemorative issue. Only available at Autumn Stampex.

December 2011	V2 upgrade just about complete. Some offices reported reversion to font 1 and others to the font 2 large gap variety.
22 February 2012	Diamond Jubilee 1952-2012 commemorative issue. Only available at Spring Stampex. Hytech
24 February 2012	Sheep. Wincor-Nixdorf as the norm. Presentation packs as Hytech.
24 April 2012	Pigs. Wincor-Nixdorf as the norm. Presentation packs as Hytech.
21 May 2012	Union flags
28 September 2012	Cattle. versions as the norm but Hytech versions in the presentation pack and Stampex
26-29 September 2012	Autumn Stampex. Pig issue 26-27 September. Will be replaced with Cattle for 28-29 September. Flag issue with Jubilee slogan will be available 26-29 September. ALL were Hytech. Cattle issue with the Jubilee overprint was produced on one of the backroom kiosks.
19-22 October 2012	Scottish Philatelic Exhibition and Congress at Perth. Overprint was Perth 2012/19-22 October on Machin and Flag.stamps
6 November 2012	Re-release of the Robin stamp as a Christmas special
3 December 2012	B.P.M.A. overprint on Machin and Robins using Hytech Kiosk A1.
18-19 January 2013	York Stamp Fair – Hytech kiosks A3 and A4. No additional overprint.
20 February 2013	Second Class Machin. Hytech versions only.
20-23 February 2013	Spring Stampex. Machin first class with Coronation overprint. Second class with no overprint. Freshwater Life – Pond. As a Hytech version
22 February 2013	Freshwater Life - Ponds
15-16 March 2013	Salisbury Stamp Fair – Hytech 2 kiosks –A3 and A4. Machin and Flag. No official overprints. Rushstamps produced a “version” for their customers.
19-20 April 2013	Scottish Philatelic Congress. Kiosks A3 and A4. Flag and Machins. “84 th Scottish Congress” overprint
10-15 May 2013	World Stamp Expo, Melbourne Australia. Two kiosks A3 and A4. Overprint "Australia 2013 World Stamp Expo" Ident for Australian usage A5AU13. Flag and Machin. Tallent’s house report that UK customers could obtain the overprint but with the code A5GB13 and from kiosk B1.
25 June 2013	Freshwater Life - Lakes
6 July 2013	Midpex. No overprint. Machin and Flag.
18-19 July 2013	York. No overprint. Machin and Flag.
18-21 September 2013	Autumn Stampex. Three kiosks – A2, A3 and A4. Overprint "The Coronation 60 th Anniversary" on Flag. Freshwater Life – Rivers expected from 20 September.
20 September 2013	Freshwater Life - Rivers

Wincor-Nixdorf and Hytech Idents – How to Identify the Vending Office

The postagelabelsuk.com website contains a listing of the office idents currently in use along with the address of the post office and the number of kiosks present. I started with an earlier version of the table from this site and have expanded it to include data on each office covering the session numbers at particular dates, receipt variants and what stamps were on sale. This may be found by Googling “pmechuk”.

For the Postal Mechanisation Study Circle, I produced a look up table linking the office id to the postcode (and vice versa). The id-postcode table is reproduced here and includes both Wincor-Nixdorf and Hytech idents.

Wincor-Nixdorf

ID	Postcode	ID	Postcode	ID	Postcode	ID	Postcode
2001	SW12 9AF	5427	PR9 0AA	9306	BD1 3HN	15010	WC2N 4DL
2006	W3 9LD	5432	SK14 2QU	9320	HX1 1AD	15504	BA1 1AJ
2009	W1S 4DS	5912	RH16 3XX	9323	LS2 8LP	15820	PH2 8AF
2010	Stampex	5946	SL6 1PT	9420	L2 0RR	16001	SW18 4BL
2011	Stampex	5948	TN9 1TJ	9422	M2 5BS	16020	HA3 5QL
2012	Stampex	6007	SE1 9SF	9432	SK1 1QF	17230	PE1 1NA
2014	DA1 1AB	6009	W1W 7NE	9614	CH1 1AA	17246	B91 3AA
2206	CW1 2HP	6134	LU1 2LP	10004	N7 6HY	17907	BN21 3NS
2313	DH1 3RE	6406	BL1 1AD	10011	SW1H 0AX	17937	PO21 1RG
2458	TN34 3EG	6504	BA14 8DA	10033	AL1 3AA	18937	PO19 1AB
2555	TR1 2AP	6613	SA31 1AA	10116	CO1 1PX	19001	SW11 1AB
2647	SY23 1DE	6925	TN34 1AA	10242	WS1 1AA	19005	NW8 6PE
2801	AB11 6AZ	6939	RG14 5BS	10306	BD21 3NL	19006	W2 1JE
2820	DD1 1AA	7012	BR6 0PT	10549	BA20 1PZ	19136	NR1 3DD
2832	G2 5QX	7023	KT3 4ER	10925	TN23 1AA	19519	EX31 1SB
2840	IV1 1AX	7113	CB2 3AA	10937	PO1 1AB	20005	NW3 6JU
2939	RG1 2DQ	7227	NG1 2BN	10941	ME13 8AA	20006	W12 8QF
3009	W1U 6SG	7311	DN1 1AA	11006	W8 6DB	20323	HG1 1AA
3129	SG1 1QR	7432	SK11 6AW	11008	SW7 1DL	20511	BS1 3XX
3202	PE21 6AE	7824	EH2 1EY	11309	DL1 1AB	21329	NE33 1AA
3313	DH3 3AA	7859	PA1 1AA	11340	S40 1TL	21519	EX1 1GJ
3422	M2 1BB	7900	GU9 7PJ	11519	EX8 1LU	22020	HA1 1BE
3824	EH1 3SR	7912	RH10 1AA	11704	BT1 1LT	22511	BS48 1RA
3912	RH12 1ER	7941	ME10 4AA	12006	W8 7RG	23004	N19 5TA
3937	PO6 3EH	8005	NW11 8RT	12137	OX16 5LB	24004	N22 6DZ
3948	TN1 2AD	8010	WC2B 4JN	12311	DN31 1AA	25003	EC2M 2BY
4003	E1 7BS	8104	SS14 1AA	12555	TR18 2LB	26611	CF10 2BY
4007	SE1 8NN	8113	CB2 3BZ	12941	ME14 1SD	28003	EC1V 9QN
4010	WC1V 7RL	8124	CM20 1AA	13201	B2 4AA	30003	EC3M 1AJ
4112	IP33 1AA	8434	WA1 1QB	13207	DE1 1DD	31005	EN5 5UU
4208	DY10 2DS	8539	PL1 1AB	13632	NP20 1AZ	41005	NW1 0RR
4552	TQ3 3EX	8618	HR1 2LE	14004	N12 8LF	74005	NW10 0TL
4900	GU15 3SP	8844	KY12 7AA	14013	SM1 1AX	85923	GU1 3AJ
4904	RG21 7AB	8912	RH16 4LQ	14130	IP1 3DN	100003	EC1M 3JB
4948	TN13 1AA	8946	SL4 1AA	14137	OX1 1ZZ	200518	DT1 1DH
5006	W2 1JE	9005	NW3 1QL	14323	LS2 7DZ	242007	EC4V 6HX

5008	SW4 7ST	9013	CR9 1HT	14340	S70 1AA	699010	EC1V 9HQ
5343	SR1 1RR	9109	MK9 3AH	14523	GL1 1AD	699011	EC1V 9HQ
5349	YO1 8DA	9140	SS1 1LL	14937	PO16 0AU		
5424	OL1 3HP	9246	B98 8AB	15008	SW3 4TR	000000	WC2N 4DL N19 5TA

Red idents are no longer in use, blue represents one used in error and green are the idents used at the Head Office Model Office which is not open to the public. However, 699010 was used at the National Digital Conference which was held in May 2011. All other idents are currently in use as of mid November 2012. Note that all office idents are six digits i.e. one should read the ident for SW12 9AF as 002001 and for WC2N 4DL as 015010.

The ident 000000 has appeared at two different offices in error during 2012.

The full address of each office is listed below. Where two addresses appear in the same address box indicates a move of location for the office and the current location is the second (lower) address.

Office Identifier	Postcode	Address	First Day
002801	AB11 6AZ	489 Union Street, Aberdeen, AB11 6AZ.	18/9/09
010033	AL1 3AA	St Peters Street, St. Albans, AL1 3AA.	22/9/09
013201	B2 4AA	1 Pinfold Street, Birmingham, B2 4AA.	16/10/08
017246	B91 3AA	44c Drury Lane, Solihull, B91 3AA.	15/5/09
009246	B98 8AB	Threadneedle House, Alcester Street, Redditch, B998 8AB	9/11/10
015504	BA1 1AJ	27 Northgate Street, Bath BA1 1AJ.	16/10/09
006504	BA14 8DA	1a Roundstone Street, Trowbridge, BA14 8DA	10/11/10
010925	BA20 1PZ	King George Street, Yeovil, BA20 1PZ.	4/3/09 ?/?/10
009306	BD1 3HN	Darley Street Branch, 38-40 Darley Street, Bradford BD1 3HN	10/11/09
010306	BD21 3NL	44 Towngate, Keighley, BD21 3NL	22/11/10
006406	BL1 1AD	Bolton Branch Office, 124 Deansgate, Bolton BL1 1AD	3/09/09
017907	BN21 3NS	143-145 Terminus Road Eastbourne, BN21 3NS	22/5/09
007012	BR6 0PT	214 High Street, Orpington, BR6 0PT.	26/11/09

020511	BS1 3XX	The Galleries, Castle Gallery, Broadmead, Bristol, BS1 3XX.	8/10/08
022511	BS48 1RA	Crown Glass Place, Nailsea BS48 1RA.	30/4/09
011704	BT1 1LT	Belfast City, 12-16 Bridge Street, Belfast, BT1 1LT.	14/10/08
007113	CB2 3AA	9-11 St Andrew Street, Cambridge, CB2 3AA.	18/11/09
008113	CB2 3BZ	57-58 9-11 St Andrew Street, Cambridge, CB2 3BZ	
026611	CF10 2BY	Queens Arcade, Queen Street, Cardiff CF10 2BY.	19/10/09
009614	CH1 1AA	2 St John Street, Chester, CH1 1AA	12/11/10
008124	CM20 1AA	1 Stone Cross, Harlow, CM20 1AA	13/9/10
010116	CO1 1PX	68-70 North Hill, Colchester, CO1 1PX.	15/10/09
009013	CR9 1HT	10 High Street, Croydon, CR9 1HT.	10/11/09
002206	CW1 2HP	15 Delamere Street, Crewe, CW1 2HP	12/10/10
002014	DA1 1AB	19 Hythe Street, Dartford, DA1 1AB.	4/11/09
002820	DD1 1AA	4 Meadowside Dundee, DD1 1AA	1/11/10
013207	DE1 1DD	Victoria Street, Derby, DE1 1DD.	21/11/08
002313	DH1 3RE	33 Silver Street, Durham, DH1 3RE.	Was expected to start 16/11/09. (2/11/09)
003313	DH3 3AA	137 Front Street, Chester Le Street, DH3 3AA	24/9/10
011309	DL1 1AB	Crown Street, Darlington, DL1 1AB.	11/5/09 ??/10
007311	DN1 1AA	Doncaster BO, 24 Priory Place, DN1 1AA	14/10/08
012311	DN31 1AA	67-71 Victoria Street, Grimsby, DN31 1AA.	19/11/08
004208	DY10 2DS	Crown House, Bull Ring, Kidderminster, DY10 2DS	9/11/10
004003	E1 7BS	Houndsditch, 11 White Kennet Street, E1 7BS.	18/8/09
100003	EC1M 3JB	Farringdon Road, London EC1M	23/2/11

		3JB	
028003	EC1V 9QN	205 Old Street, London EC1V 9QN.	19/8/09
025003	EC2M 2BY	Broadgate Circle, 35 Broadgate Circle London EC2M 2BY.	3/8/09
030003	EC3M 2BY	The City of London, 12 Eastcheap, London, EC3M 2BY.	29/7/09
024003 GONE	EC4V 6HX	Ludgate Circus, London, EC4V 6HX.	15/10/08 CLOSED
242007	EC4Y 0AA	Tudor Street, London. The receipts from these machines give the address as "Ludgate Circus, Post And Go, 2a Tudor Street, London, EC4Y 0AA.	21/4/09
003824	EH1 3SR	St. James, 8-10 St James Centre, Edinburgh, EH1 3SR.	3/6/09
007824	EH2 1EY	40 Frederick Street Edinburgh, EH 1EY.	1/7/09
031005	EN5 5UU	63-65 High Street, Barnet, EN5 5UU	
021519	EX1 1GJ	28 Bedford Street, Exeter, EX1 1GJ.	29/6/09
011519	EX8 1LU	4-6 Chapel Street, Exmouth, EX8 1LU.	4/6/09
019519	EX31 1SB	39-40 Boutport Street, Barnstaple, EX31 1SB	1/11/10
002832	G2 5QX	47 St Vincent Street, Glasgow, G2 5QX.	21/08/09
014532	GL1 1AD	Kings Square, Gloucester, GL1 1AD.	21/7/09
085923	GU1 3AJ	171-173 High Street, Guildford Town, GU1 3AJ.	24/11/08
007900	GU9 7PJ	107 West Street, Farnham, GU9 7PJ.	28/3/09
004900	GU15 3SP	15 Princess Way, Camberley, GU15 3SP	11/10/10
022020	HA1 1BE	14 College Road, Harrow, HA1 1BE.	19/10/09
016020	HA3 5QL	4-12 Headstone Drive, Wealdstone, Harrow, HA3 5QL	
030323	HG1 1AA	11 Cambridge Road, Harrogate, HG1 1AA.	6/8/09
008618	HR1 2LE	14-15 St Peters Street, Hereford, HR1 2LE.	5/11/09
009320	HX1 1AD	Commercial Street, Halifax, HX1	16/6/09

		1AD.	
014130	IP1 3DN	29 Tower Rampart Centre, Tavern Street, Ipswich, IP1 3DN.	16/5/09
004112	IP33 1AA	17-18 Cornhill, Bury St Edmunds, IP33 1AA.	24/6/09
002840	IV1 1AX	14-16 Queensgate, Inverness, IV1 1AX.	
007023	KT3 4ER	150 High Street, New Malden, KT3 4ER.	28/9/09
008844	KY12 7AA	42-44 Queen Anne Street, Dunfermline, KY12 7AA	2/11/10
009420	L2 0RR	India Building, Water Street, Liverpool, L2 0RR (Corn Exchange).	11/8/09
014323	LS2 7DZ	The Markets, 6-16 New York Street, Leeds, LS2 7DZ	8/11/10
009323	LS2 8LP	116 Albion Street, St Johns, Leeds, LS2 8LP.	20/11/08
006134	LU1 2LP	The Arndale Centre, Luton, LU1 2LP.	3/11/09
003422	M2 1BB	Spring Gardens, Manchester, M2 1BB.	12/5/09
009422	M2 5BS	21 Brazenose Street, Manchester , M2 5BS.	20/11/09
007941	ME10 4AA	Central Avenue, Sittingbourne, ME10 4AA	15/11/10
010941	ME13 8AA	East Street, Faversham, ME13 8AA	15/11/10
012941	ME14 1SD	89 Bank Street, Maidstone, ME14 1SD.	15/10/08
009109	MK9 3AH	17-19 Crown Walk, Milton Keynes, MK9 3AH.	18/9/09
010004	N7 6HY	482 Holloway Road, London, N7 6HY	17/9/10
014004	N12 8LF	751 High Road, North Finchley, London, N12 8LF.	5/6/09
023004	N19 5TA	14 Junction Road, Upper Holloway, London N19 5TA	17/9/10
024004	N22 6DZ	191 High Road, Wood Green, London, N22 6Dz	17/11/10
021329	NE33 1AA	Kepple Street, South Shields, NE33 1AA.	13/10/08
007227	NG1 2BN	Queen Street, Nottingham NG1 2BN.	22/10/09

013632	NP20 1AZ	9 Bridge Street Newport, NP20 1AZ.	15/9/09
019136	NR1 3DD	84-85 Castle Meadow Walk, Norwich NR1 3DD.	17/11/09
041005	NW1 0RR	Camden High Street, Camden, London, NW1 0RR.	15/7/09
009005	NW3 1QL	79-81 Hampstead High Street, Hampstead, NW3 1QL.	26/6/09
020005	NW3 6JU	18 Harben Parade, Finchley Road, Swiss Cottage, NW3 6JU.	22/7/09
019005	NW8 6PE	28-32 Circus Road, St Johns Wood, NW8 6PE.	25/6/09
008005	NW11 8RT	879 Finchley Road, Golders Green, London NW11 8RT	21/9/10
005424	OL1 3HP	3-5 Lord Street, Oldham, OL1 3HP	12/10/10
014137	OX1 1ZZ	102-104 St Aldates, Oxford, OX1 1ZZ.	12/11/09
012137	OX16 5LB	57-58 High Street, Banbury, OX16 5LB	
007895	PA1 1AA	Piazza Shopping Centre, Paisley, PA1 1AA.	13/11/09
017230	PE1 1NA	28-30 Cowgate, Peterborough, PE1 1NA	11/11/10
003202	PE21 6AE	18 Wide Bargate, Boston, PE21 5AE	11/11/10
015820	PH2 8AF	109 South Street, Perth, PH2 8AF.	19/8/09
008539	PL1 1AB	5 St Andrews Cross, Plymouth, PL1 1AB.	13/11/09
010937	PO1 1AB	Slindon Street Portsmouth PO1 1AB.	19/5/09
003937	PO6 3EH	13 High Street, Cosham, Portsmouth, PO6 3EH	11/10/10
014937	PO16 0AU	117 West Street, Fareham, PO16 0AU.	19/11/08
018937	PO19 1AB	10 West Street, Chichester, PO19 1AB.	23/11/08
017937	PO21 1RG	High Street,, Bognor Regis, PO21 1RG	11/10/10
005427	PR9 0AA	130c Lord Street, Southport, PR9 0AA.	6/7/09
002939	RG1 2DQ	21-22 Market Place, Reading, RG1 2DQ.	19/11/08
006939	RG14 5BS	39 Cheap Street, Newbury, RG14	10/11/10

		5BS	
004904	RG21 7AB	5-7 London Street, Basingstoke, RG21 7AB.	25/11/08
007912	RH10 1AA	7 The Boulevard, Crawley, RH10 1AA	16/11/10
003912	RH12 1ER	15 Carfax, Horsham, RH12 1ER.	11/3/09
005912	RH16 3XX	5-6 The Orchards, Haywards Heath, RH16 3XX.	26/3/09
008912	RH16 4LQ	59-63 South Street, Haywards Heath, RH16 4LQ	
011340	S40 1TL	1 Market Place, Chesterfield, S40 1TL.	12/11/09
014340	S70 1AA	Barnsley BO, 4 Pitt Street, Barnsley, S70 1AA	13/11/09
006613	SA31 1AA	9-10 King Street, Carmarthen, SA31 1AA	18/11/10
004007	SE1 8NN	52 Blackfriars Road, London, SE1 8NN	14/9/10
006007	SE1 9SF	19a Borough High Street, London Bridge, SE1 9SF.	30/10/09
003129	SG1 1QR	22-23 Westgate, Stevenage, SG1 1QR.	4/9/09
009432	SK1 1QF	36-40 Great Underbank, Stockport, SK1 1QF	13/10/10
007432	SK11 6AW	23 Castle Street, Macclesfield, SK11 6AW.	13/10/09
005432	SK14 2QU	30-32 Market Place, Hyde, SK14 2QU	13/10/10
008946	SL4 1AA	38-39 Peascod Street, Windsor, SL4 1AA.	23/10/09
005946	SL6 1PT	114 High Street, Maidenhead, SL6 1PT.	29/11/08
014013	SM1 1AX	107 St Nicholas Centre, High Street, Sutton, SM1 1AX	23/11/09
005343	SR1 1RR	45-47 Fawcett Street, Sunderland, SR1 1RR	11/10/08
009140	SS1 1LL	199-201 High Street, Southend-On-Sea, SS1 1LL.	18/9/09
008104	SS14 1AA	25 East Square, Basildon, SS14 1AA.	1/5/09
010011	SW1H 0AX	1 Broadway, London, SW1H 0AX.	17/9/09
015008	SW3 4TR	Unit G11, Kings Walk Shopping Centre, 122 Kings Road, London, SW3 4TR.	25/9/09
005008	SW4 7ST	161-163 Clapham High Street,	30/10/08

		Clapham Common, SW4 7ST.	
011008	SW7 1DL	6 Raphael Street, Knightsbridge, London, SW7 1DL	16/9/10
019001	SW11 1AB	202 Lavender Hill, Battersea. London, SW11 1AB	22/9/10
002001	SW12 9AF	92a Balham High Road, Balham, SW12 9AF	16/11/10
016001	SW18 4BL	1 Arndale Walk, Wandsworth, SW18 4BL	22/9/10
002647	SY23 1DE	8 Great Darkgate Street, Aberystwyth, SY23 1DE	18/11/10
003948	TN1 2AD	18 Grosvenor Road, Five Ways, Tunbridge Wells, TN1 2AD.	27/3/09
005948	TN9 1TJ	5 Angel Walk, Tonbridge, TN9 1TJ	17/11/10
004948	TN13 1AA	South Park, Sevenoaks, TN13 1AA.	31/3/09
010925	TN23 1AA	Tufton Street, Ashford, TN23 1AA.	5/3/09
002458 GONE	TN34 3EG	Premier Old Hastings, PO Essentials, 21-22 George Street, Hastings, TN34 3EG.	16/10/08 REMOVED
006929	TN34 1AA	16 Cambridge Road, Hastings, TN34 1AA.	16/4/09
004552	TQ3 3EX	34 Torquay Road, TQ3 3EX	25/8/09
002555	TR1 2AP	High Cross, Truro, TR1 2AP.	30/7/09
012555	TR18 2LB	113 Market Jew Street, Penzance, TR18 2LB	2/11/10
002009	W1S 4DS	43-44 Albemarle Street, London W1S 4DS	29/10/09
003009	W1U 6SG	111 Baker Street, London, W1U 6SG.	20/20/09
006009	W1W 7NE	54-56 Great Portland Street, London, W1W 7NE.	25/9/09
005006 019006	W2 1JE	Paddington Quay, Retail Unit 6, West End Quay, Praed Street, London, W2 1JE.	16/2/09
002006	W3 9LD	23/29 King Street, Acton, London W3 9LD	
011006 012006	W8 6DB W8 7RG	257 Kensington High Street, London, W8 6DB 208-212 Kensington High Street, London, W8 7RG	27/11/09
020006	W12 8QF	65/69 The Green, Shepherds	21/9/10

		Bush, London, W12 8QF	
008434	WA1 1QB	Golden Square, Warrington, WA1 1QB.	11/7/09
004010	WC1V 7RL	High Holborn Branch, 181 High Holborn, London WC1V 7RL	14/08/09
008010	WC2B 4JN	95 Aldwych, London, WC2B 4JN.	24/7/09 13/9/10?
015010	WC2N 4DL	24-28 William IV Street, Trafalgar Square, London, WC2N 4DL.	21/10/09
010242	WS1 1AA	Darwall Street, Walsall, WS1 1AA.	24/11/08
005349	YO1 8DA	22 Lendal, York, YO1 8DA.	9/11/09
See below	EH	Tallents House, Edinburgh.	17/9/10
002010		Stamp Fairs/Exhibitions. Presentation Packs London 2010 receipts gave the address as Wincor Nixdorf Ltd, Alba House, Mulberry Business Park, Fishpond Road, Wokingham, Berkshire RG41 2GY initially but changed to Festival of Stamps, Business Design Centre, 52 Upper Street, Islington, London, N1 0QH. Autumn Stampex 2010 receipts gave the address as 52 Upper Street, London, N1 0QH	2010
002011		Stamp Fairs/Exhibitions. Presentation packs. Stampex	2011 Hytech
002012		Stamp Fairs/Exhibitions. Presentation packs. Stampex	2012 Hytech

Wincor-Nixdorf

From day one of the Wincor-Nixdorf kiosks, it has been possible to decode the data in the datastring printed along the bottom of each faststamp and PAG. Wincor-Nixdorf faststamps have datastrings of the form:

015010 1-12345-01

The first part of the string is the office identifier. This code indicates the post office that vended the stamp (see tables above). In this instance 015010 corresponds to William IV Street/Trafalgar Square office. The next digit corresponds to the kiosk at

that office (kiosk 1 in this instance). After the first hyphen is a five digit session number followed by the transaction number within that session.

The Post and Go labels have a modification to the data string by the addition of "PAG":

015010 1-PAG-12345-01

The data string decodes as before.

Hytech

Initially, the Hytech kiosks used two digit idents of the form 21, 22, 91, 92, 93 and 94. The first digit corresponds to either February or September which are the months that Stampex is held. The second digit identified the kiosk.

With the introduction of the new style Hytechs at Autumn Stampex 2012, the format of the data string changed. What we have been describing as the office ident changes its purpose to give dating and reel information. At Autumn Stampex 2012 the datastring took the form:

A9GB12 A1-123456-01

where everything after the A1- is as the Wincor-Nixdorf kiosks. The translation of the former office ident becomes:

A (or B) = the reel (printer) from which the stamp came from

9 = month of production (1-9 = January to September, then O, N, D for October, November and December)

GB = country of printing (NL has been seen on presentation pack stock and PO FDCs). AU =Australia.

A1 = the kiosk ident. A1-A4, B1, B2, C1 and C2 are known.

Therefore the valid code sequences for this new "dating" field (dating ident) are as follows:

Dater	Kiosks	Usage
A9GB12	A1, A2, B1, B2	Autumn Stampex
A9NL12	C2	Presentation packs
	C1	FDC
AOGB12	A1, A2	Perth 2012
ANGB12	A3, A4	Camden
ADGB12	A3, A4	Camden
	A1	BPMA
A1GB13	A1	BPMA
	A3, A4	York Stamp Fair
A2GB13	A2, A3, A4,	Spring Stampex,
	B1, B2	
	C2	Presentation packs
	C1	FDC
	A1	BPMA
A3GB13	A3, A4	Salisbury Stamp Fair
	A1	BPMA
A4GB13	A1	BPMA

	A3, A4	84 th Scottish Congress
A5GB13	A1	BPMA
A5AU13	A3 A4	Australia 2013 Expo
A5GB13	B1	Australia 2013 Expo
A6GB13	A1	BPMA
A7GB13	A1	BPMA
A8GB13	A1	BPMA
A9GB13	A1	BPMA
	A2, A3, A4	Autumn Stampex
	B1, B2	
	C2	Presentation packs
	C1	FDC
AOGB13	A1	BPMA
ANGB13	A1	BPMA
ADGB13	A1	BPMA

Note that a similar pattern would be expected for 2014 dater identis.

It is unclear as to when the reel identification position will become active. When this occurs the first letter in the dater ident could be either A or B (ie ANGB13 or BNGB13).

Usefulness of the Session Numbers

By monitoring the session numbers one can build up a picture of usage of the kiosks over a period of time. With sufficient data one might be able to identify higher than normal usage which might indicate some event at the office. Also one can identify when kiosks were rest either as the result of a problem or the counter has “gone round the clock”. In association with what was purchased in a session, one may be able to build up a picture of what was used and when. Unfortunately, with over 150 offices and 250 kiosks that sort of data is not readily available and relies on observation by individuals.

I have been trying to put together some of that information to allow collectors to put their material in to context or authenticate items which may come their way. From personal observations, from PMSC members and from people that I have made contact via studying this collecting area, I have managed to put together a patchy picture of some offices.

The *ATM Informer* has included some of the data and leaves the reader to interpret the data appropriately. Three offices are given here as examples. These are Cambridge (007113/008113), Trafalgar Square (015010) and Baker Street (003009)

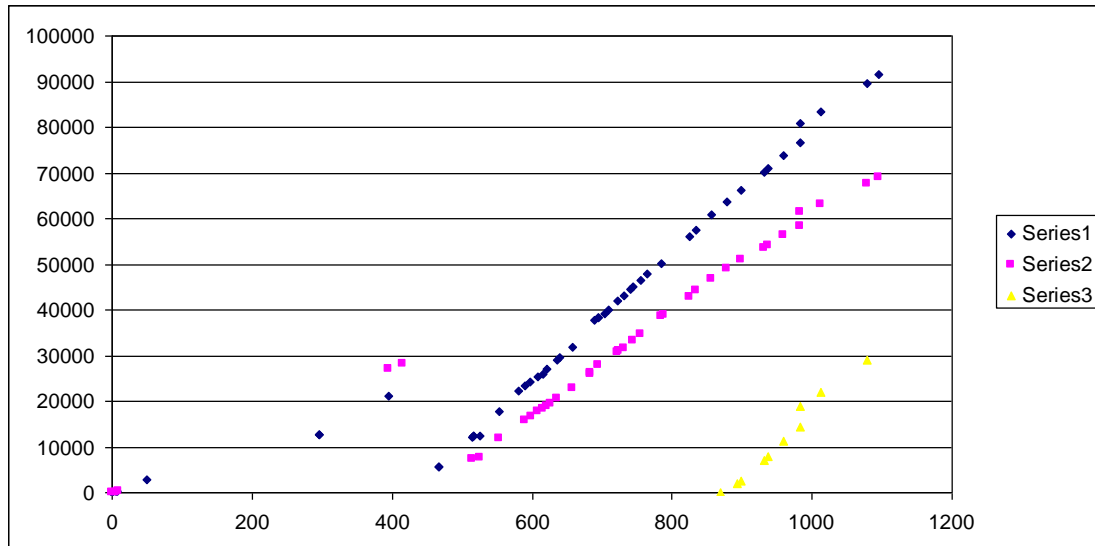
Cambridge originally had two kiosks but a third was added around the time the office moved premises and changed office ident. The table records the date of the observation of the session number, the day is the time from the first day and makes allowance for Sundays and holidays. The last columns list the session numbers.

Date	Day	1	2	3
------	-----	---	---	---

18.11.09	0	1	1	
24.11.09	6	151	90	
26.11.09	8	00212		
27.11.09	9		00187	
15.01.10	50	02733		
17.09.10	295	12574		
17.09.10	295	12575		
12.01.11	395	20995	27122	
24.01.11	416		28234	
21.03.11	466	05577		
22.03.11	467	05680		
17.05.11	515	12240	07399	
18.05.11	526	12388	07519	
19.05.11	517	12411		
19.05.11	517	12412		
29.06.11	553	17656	11787	
09.08.11	580	22235		
19.08.11	589	23323	15788	
30.08.11	598	24224		
31.08.11	599		16701	
12.09.11	609	25364	17628	
19.09.11	615	26005	18219	
27.09.11	621	26910	18884	
04.10.11	627		19527	
14.10.11	635	28891	20487	
20.10.11	640	29579		
09.11.11	657	31962	22724	
09.12.11	683		26011	
10.12.11	684		26109	
17.12.11	690	37709		
21.12.11	694	38419	27940	
21.12.11	694	38420		
04.01.12	704	39280		
11.01.12	710	40113		
25.01.12	722	41910	30690	
27.01.12	724		30890	
02.02.12	731	42976	31581	
13.02.12	741	44436		
17.02.12	745	45006	33298	
01.03.12	756	46548	34608	
12.03.12	765	47911		
03.04.12	784	50261	38535	
07.04.12	788		38907	
21.05.12	826	56009	42876	
31.05.12	834	57395	44104	
27.06.12	857	60903	46729	
12.07.12	870			22
23.07.12	879	63800	49122	
08.08.12	893			2023
13.08.12	898	66191	50862	2527
20.09.12	931	70029	53543	6977
28.09.12	937	70957	54108	7955
24.10.12	960	73928	56294	11346

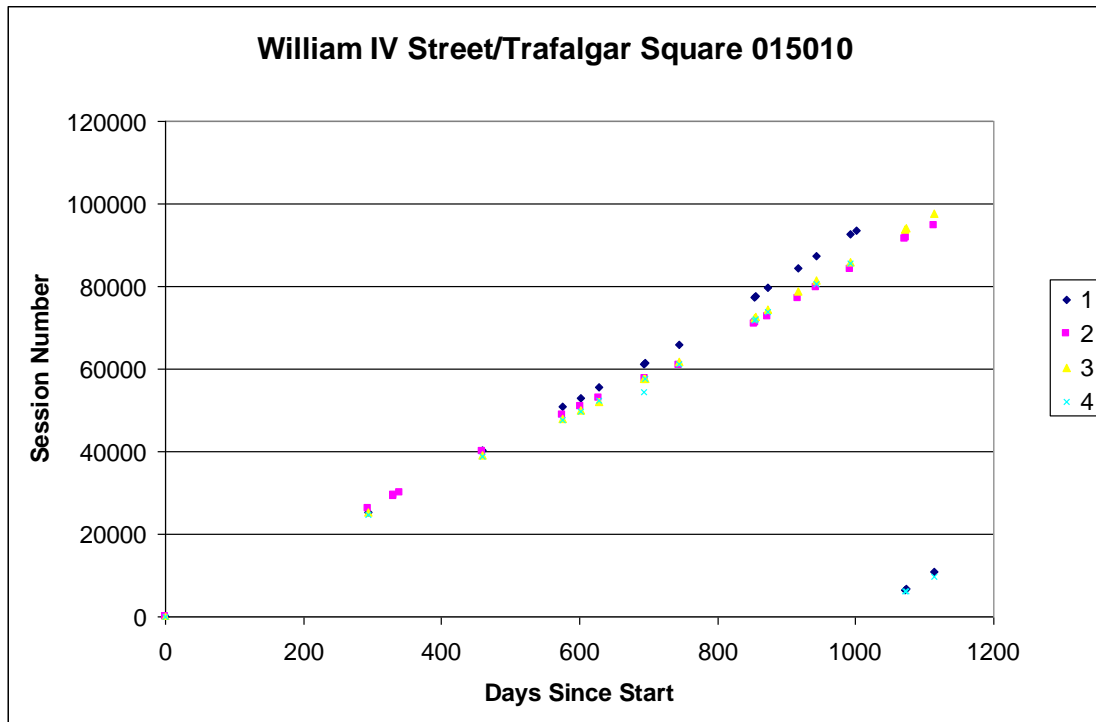
20.11.12	984	76607	58233	14487
20.12.12	984	80729	61450	18989
22.01.13	1012	83310	63145	22019
20.03.13	1078	89541	67491	29016
10.04.13	1096	91486	68999	

When one plots the data, a reset of the session counter can be estimated along with the average number of sessions per day for each kiosk.



Similarly, for Trafalgar Square, London, one can see that kiosks went “around the clock” and kiosks 1 and 4 had reset in August 2012. Kiosks 2 and 3 have since done the same.

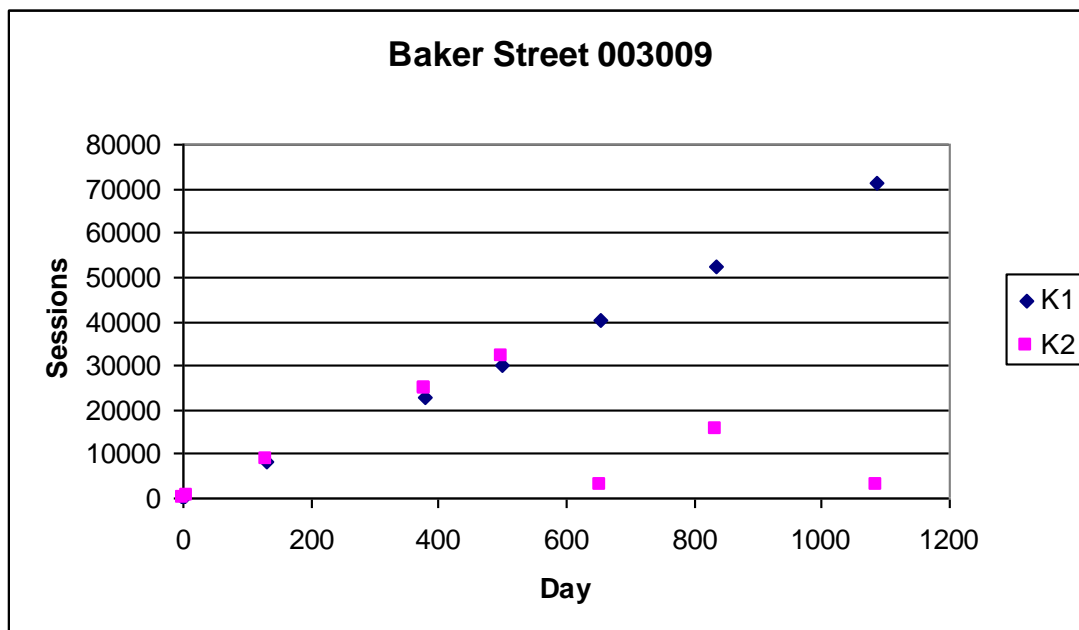
Day\Kiosk	1	2	3	4	Date
0	1	1	1	1	21/10/2009
293	25188	26252	25276	24736	10/08/2010
330		29224			16/09/2010
331		29405			17/09/2010
339		29915			25/09/2010
460	40174	39903	39030	38699	24/01/2011
575	50898	48913	48079	47718	19/05/2011
601	52987	50782	49984	49668	14/06/2011
629	55652	52996	52086	52306	12/07/2011
693	61190		57594	54494	14/09/2011
695	61397	57748	57754	57659	16/09/2011
744	65822	60874	61828	61310	03/11/2011
854	77450	70961	72499	71910	22/02/2012
856	77750	71183	72738	72132	24/02/2012
873	79570	72763	74425	73880	12/03/2012
916	84276	77045	78697		24/04/2012
943	87328	79730	81471	80572	21/05/2012
993	92686	84249	86024	85483	10/07/2012
1001	93598				18/07/2012
1071	6429	91541	93958	6050	26/09/2012
1073	6618	91715	94148	6244	28/09/2012
1113	10746	94847	97617	9801	07/11/2012
1139		96978	99727	12014	03/12/2012



Baker Street is equipped with two Wincor-Nixdorf kiosks which became operational on 29 October 2009. It was one of 31 offices that received the initial upgrade allowing the vending of the Birds 1 issue.

Date	Day	K1	K2
29/10/2009	0	0	0
07/11/2009	8		489
12/04/2010	132	8122	8879
24/01/2011	378	22866	24510
24/01/2011	378		24595
16/06/2011	498	29994	32019
13/12/2011	654	40089	3127
10/07/2012	834	52427	15666
01/05/2013	1086	71319	3080

Of note is that kiosk 2 has been reset twice for some reason.



I would welcome similar data on other offices and any additional data on these two offices so that I could expand this section in future editions. Contact e-mail address is pmechuk@gmail.com.

Gibbons Catalogue Numbers

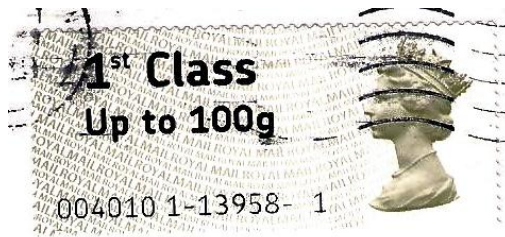
The Gibbons numbers used here were obtained from consulting various issues of *Gibbons Stamp Monthly* (GSM) and various dealers' catalogues. I believe that they are correct at the time of publication. I include these numbers not to advertise for any particular company or companies but to link my listing to a recognised source to assist the collector and user of this work. I acknowledge the source(s) of these numbers.

I do not list catalogue prices because I am not a dealer and I leave it up to the collector to decide what value they put on a particular item. In one or two instances, I have mentioned prices realised on e-bay but I do reserve my thoughts on some of the prices realised.

The Catalogue/Listing
Faststamps



Machin Font 1 FDC 8/10/08



Machin font 1 missing digit in session



Machin font 1 missing “e” from Worldwide

JM	V	SG	Type	Font	Notes
Machin Definitive – Large Font (Font 1)					
1		FS1	1st up to 100g	1	
1	a	FS1	1st up to 100g	1	Presentation Pack
1	b	FS1	1st up to 100g	1	Missing digit
2		FS2	1st Large	1	
2	a	FS2	1st Large	1	Presentation Pack
3		FS3	Europe up to 20g	1	
3	a	FS3	Europe up to 20g	1	Presentation Pack
4		FS4	Worldwide up to 10g	1	
4	a	FS4	Worldwide up to 10g	1	Presentation Pack
4	b	FS4	Worldwide up to 10g	1	Missing “e” from Worldwide
5		FS5	Worldwide up to 20g	1	
5	a	FS5	Worldwide up to 20g	1	Presentation Pack
5	b	FS4	Worldwide up to 20g	1	Missing “e” from Worldwide



V2 Upgrade version of the Machin Faststamp – This was originally seen at Eastcheap/City of London but without the Worldwide up to 40g value.



Birds 1 FDC 17/9/10

Birds 1 Pictorial

Blue Tit

6		FS6	1st up to 100g	2	
6	a	FS6	1st up to 100g	2	Presentation pack
6	b	FS6	1st up to 100g	1	
7		FS7	1st Large	2	
7	b	FS7	1st Large	1	
8		FS8	Europe up to 20g	2	
8	b	FS8	Europe up to 20g	1	
9		FS9	Worldwide up to 10g	2	
9	b	FS9	Worldwide up to 10g	1	
9	c	FS9	Worldwide up to 10g	2	up to 10g missing
10		FS10	Worldwide up to 20g	2	

Wincor-Nixdorf and Hytech ATM Stamps

Edition 1 (2013)

10	b	FS10	Worldwide up to 20g	1	
Goldfinch					
11		FS6	1st up to 100g	2	
11	a	FS6	1st up to 100g	2	Presentation pack
11	b	FS6	1st up to 100g	1	
12		FS7	1st Large	2	
12	b	FS7	1st Large	1	
13		FS8	Europe up to 20g	2	
13	b	FS8	Europe up to 20g	1	
14		FS9	Worldwide up to 10g	2	
14	b	FS9	Worldwide up to 10g	1	
14	c	FS9	Worldwide up to 10g	1	up to 10g missing
15		FS10	Worldwide up to 20g	2	
15	b	FS10	Worldwide up to 20g	1	
Wood pigeon					
16		FS6	1st up to 100g	2	
16	a	FS6	1st up to 100g	2	Presentation pack
16	b	FS6	1st up to 100g	1	
17		FS7	1st Large	2	
17	b	FS7	1st Large	1	
18		FS8	Europe up to 20g	2	
18	b	FS8	Europe up to 20g	1	
19		FS9	Worldwide up to 10g	2	
19	b	FS9	Worldwide up to 10g	1	Presentation pack
19	c	FS9	Worldwide up to 10g	1	up to 10g missing
20		FS10	Worldwide up to 20g	2	
20	b	FS10	Worldwide up to 20g	1	
Robin					
21		FS6	1st up to 100g	2	
21	b	FS6	1st up to 100g	1	
22		FS7	1st Large	2	
22	a	FS6	1st Large	2	Presentation pack
22	b	FS7	1st Large	1	
23		FS8	Europe up to 20g	2	
23	b	FS8	Europe up to 20g	1	
24		FS9	Worldwide up to 10g	2	
24	b	FS9	Worldwide up to 10g	1	
24	c	FS9	Worldwide up to 10g	1	up to 10g missing
25		FS10	Worldwide up to 20g	2	
25	b	FS10	Worldwide up to 20g	1	
House sparrow					
26		FS6	1st up to 100g	2	
26	a	FS6	1st up to 100g	2	Presentation pack
26	b	FS6	1st up to 100g	1	
27		FS7	1st Large	2	
27	b	FS7	1st Large	1	
28		FS8	Europe up to 20g	2	
28	b	FS8	Europe up to 20g	1	
29		FS9	Worldwide up to 10g	2	
29	b	FS9	Worldwide up to 10g	1	
29	c	FS9	Worldwide up to 10g	1	up to 10g missing
30		FS10	Worldwide up to 20g	2	
30	b	FS10	Worldwide up to 20g	1	
Starling					
31		FS6	1st up to 100g	2	
31	a	FS6	1st up to 100g	2	Presentation pack
31	b	FS6	1st up to 100g	1	
32		FS7	1st Large	2	
32	b	FS7	1st Large	1	

33		FS8	Europe up to 20g	2	
33	b	FS8	Europe up to 20g	1	
34		FS9	Worldwide up to 10g	2	
34	b	FS9	Worldwide up to 10g	1	
34	c	FS9	Worldwide up to 10g	1	up to 10g missing
35		FS10	Worldwide up to 20g	2	
35	b	FS10	Worldwide up to 20g	1	



Birds 2 FDC 24/1/11

Birds 2 Pictorial

Blackbird

36		FS12	1st up to 100g	2	
36	a	FS11	1st up to 100g	2	Presentation Pack
37		FS13	1st Large	2	
38		FS14	Europe up to 20g	2	
39		FS15	Worldwide up to 10g	2	
40		FS16	Worldwide up to 20g	2	

Magpie

41	a	FS11	1st up to 100g	2	Presentation Pack
41		FS12	1st up to 100g	2	
42		FS13	1st Large	2	
43		FS14	Europe up to 20g	2	
44		FS15	Worldwide up to 10g	2	
45		FS16	Worldwide up to 20g	2	

Long-tailed tit

46	a	FS11	1st up to 100g	2	Presentation Pack
46		FS12	1st up to 100g	2	
47		FS13	1st Large	2	
48		FS14	Europe up to 20g	2	
49		FS15	Worldwide up to 10g	2	
50		FS16	Worldwide up to 20g	2	

Chaffinch

51		FS12	1st up to 100g	2	
51	a	FS11	1st up to 100g	2	Presentation Pack
52		FS13	1st Large	2	
53		FS14	Europe up to 20g	2	

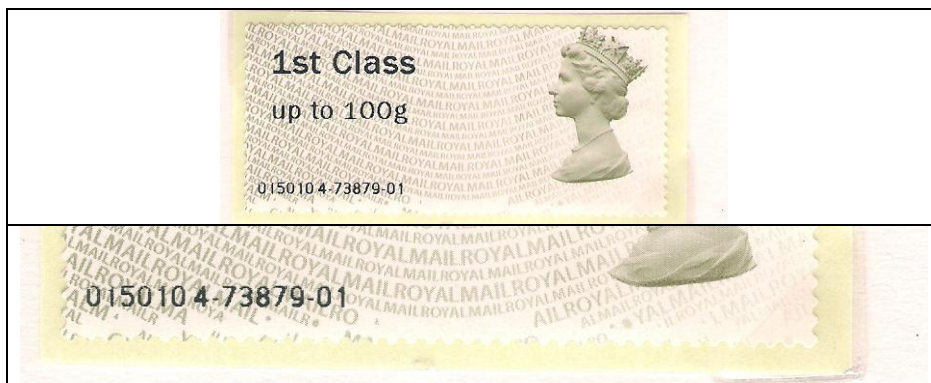
54		FS15	Worldwide up to 10g	2	
55		FS16	Worldwide up to 20g	2	
Collared dove					
56		FS12	1st up to 100g	2	
56	a	FS11	1st up to 100g	2	Presentation Pack
57		FS13	1st Large	2	
58		FS14	Europe up to 20g	2	
59		FS15	Worldwide up to 10g	2	
60		FS16	Worldwide up to 20g	2	
Greenfinch					
61		FS12	1st up to 100g	2	
61	a	FS11	1st up to 100g	2	Presentation Pack
62		FS13	1st Large	2	
63		FS14	Europe up to 20g	2	
64		FS15	Worldwide up to 10g	2	
65		FS16	Worldwide up to 20g	2	



Machin font 2



Machin font 2 large gap



Machin font 2 mis-cut stamp leading to missing security print

Machin Definitive – Small Font (Font 2)

66		FS1a	1st up to 100g	2	
66	a	FS1a	1st up to 100g	2	Large gap

Wincor-Nixdorf and Hytech ATM Stamps

Edition 1 (2013)

66	b	FS1a	1st up to 100g	2	Hytech
66	c	FS1a	1st up to 100g	2	Mis-cut
67		FS2a	1st Large	2	
67	a	FS2a	1st Large	2	Large gap
67	b	FS2a	1st Large	2	Hytech
66	c	FS1a	1st up to 100g	2	Mis-cut
68		FS3a	Europe up to 20g	2	
68	a	FS3a	Europe up to 20g	2	Large gap
68	b	FS3a	Europe up to 20g	2	Hytech
68	c	FS3a	Europe up to 20g	2	Mis-cut
69		FS4a	Worldwide up to 10g	2	
69	a	FS4a	Worldwide up to 10g	2	Large gap
69	b	FS4a	Worldwide up to 10g	2	Hytech
69	c	FS4a	Worldwide up to 10g	2	Mis-cut
70		FS5a	Worldwide up to 20g	2	
70	a	FS5a	Worldwide up to 20g	2	Large gap
70	b	FS5a	Worldwide up to 20g	2	Hytech
70	c	FS5a	Worldwide up to 20g	2	Mis-cut



Machin Worldwide up to 40g

71			Worldwide up to 40g	2	
71	a		Worldwide up to 40g	2	Large gap
71	b		Worldwide up to 40g	2	Mis-cut



Birds 3 FDC 19/5/11

Birds 3 Pictorial

Great Crested Grebe

72		FS16	1st up to 100g	2	
72	a	FS16	1st up to 100g	2	Presentation pack
73		FS17	1st Large	2	
74		FS18	Europe up to 20g	2	
75		FS19	Worldwide up to 10g	2	
76		FS20	Worldwide up to 20g	2	

Greylag goose

77		FS16	1st up to 100g	2	
77	a	FS16	1st up to 100g	2	Presentation pack
78		FS17	1st Large	2	
79		FS18	Europe up to 20g	2	
80		FS19	Worldwide up to 10g	2	
81		FS20	Worldwide up to 20g	2	

Kingfisher

82		FS16	1st up to 100g	2	
82	a	FS16	1st up to 100g	2	Presentation pack
83		FS17	1st Large	2	
84		FS18	Europe up to 20g	2	
85		FS19	Worldwide up to 10g	2	
86		FS20	Worldwide up to 20g	2	

Moorhen

87		FS16	1st up to 100g	2	
87	a	FS16	1st up to 100g	2	Presentation pack
88		FS17	1st Large	2	
89		FS18	Europe up to 20g	2	
90		FS19	Worldwide up to 10g	2	
91		FS20	Worldwide up to 20g	2	

Mute swan

92		FS16	1st up to 100g	2	
92	a	FS16	1st up to 100g	2	Presentation pack
93		FS17	1st Large	2	
94		FS18	Europe up to 20g	2	
95		FS19	Worldwide up to 10g	2	
96		FS20	Worldwide up to 20g	2	

Mallard

97		FS16	1st up to 100g	2	
97	a	FS16	1st up to 100g	2	Presentation pack
98		FS17	1st Large	2	
99		FS18	Europe up to 20g	2	
100		FS19	Worldwide up to 10g	2	
101		FS20	Worldwide up to 20g	2	



Birds 4 FDC16/9/11 Wincor-Nixdorf

Wincor-Nixdorf and Hytech ATM Stamps

Edition 1 (2013)

Birds 4 Pictorial –Wincor-Nixdorf Version

Puffin					
102		FS21	1st up to 100g	2	
102	a	FS21	1st up to 100g	2	Presentation pack
103		FS22	1st Large	2	
104		FS23	Europe up to 20g	2	
105		FS24	Worldwide up to 10g	2	
106		FS25	Worldwide up to 20g	2	
107		FS26	Worldwide up to 40g	2	
Gannet					
108		FS21	1st up to 100g	2	
108	a	FS21	1st up to 100g	2	Presentation pack
109		FS22	1st Large	2	
110		FS23	Europe up to 20g	2	
111		FS24	Worldwide up to 10g	2	
112		FS25	Worldwide up to 20g	2	
113		FS26	Worldwide up to 40g	2	
Oystercatcher					
114		FS21	1st up to 100g	2	
114	a	FS21	1st up to 100g	2	Presentation pack
115		FS22	1st Large	2	
116		FS23	Europe up to 20g	2	
117		FS24	Worldwide up to 10g	2	
118		FS25	Worldwide up to 20g	2	
119		FS26	Worldwide up to 40g	2	-
Ringed plover					
120		FS21	1st up to 100g	2	
120	a	FS21	1st up to 100g	2	Presentation pack
121		FS22	1st Large	2	
122		FS23	Europe up to 20g	2	
123		FS24	Worldwide up to 10g	2	
124		FS25	Worldwide up to 20g	2	
125		FS26	Worldwide up to 40g	2	
Cormorant					
126		FS21	1st up to 100g	2	
126	a	FS21	1st up to 100g	2	Presentation pack
127		FS22	1st Large	2	
128		FS23	Europe up to 20g	2	
129		FS24	Worldwide up to 10g	2	
130		FS25	Worldwide up to 20g	2	
131		FS26	Worldwide up to 40g	2	-
Arctic tern					
132		FS21	1st up to 100g	2	
132	a	FS21	1st up to 100g	2	Presentation pack
133		FS22	1st Large	2	
134		FS23	Europe up to 20g	2	
135		FS24	Worldwide up to 10g	2	
136		FS25	Worldwide up to 20g	2	
137		FS26	Worldwide up to 40g	2	



Birds 4 FDC16/9/11 Hytech – Autumn Stampex

Birds 4 Pictorial Hytech Version

Puffin			
138	FS21	1st up to 100g	2
139	FS22	1st Large	2
140	FS23	Europe up to 20g	2
141	FS24	Worldwide up to 10g	2
142	FS25	Worldwide up to 20g	2
143	FS26	Worldwide up to 40g	2
Gannet			
144	FS21	1st up to 100g	2
145	FS22	1st Large	2
146	FS23	Europe up to 20g	2
147	FS24	Worldwide up to 10g	2
148	FS25	Worldwide up to 20g	2
149	FS26	Worldwide up to 40g	2
Oystercatcher			
150	FS21	1st up to 100g	2
151	FS22	1st Large	2
152	FS23	Europe up to 20g	2
153	FS24	Worldwide up to 10g	2
154	FS25	Worldwide up to 20g	2

155	FS26	Worldwide up to 40g	2
Ringed plover			
156	FS21	1st up to 100g	2
157	FS22	1st Large	2
158	FS23	Europe up to 20g	2
159	FS24	Worldwide up to 10g	2
160	FS25	Worldwide up to 20g	2
161	FS26	Worldwide up to 40g	2
Cormorant			
162	FS21	1st up to 100g	2
163	FS22	1st Large	2
164	FS23	Europe up to 20g	2
165	FS24	Worldwide up to 10g	2
166	FS25	Worldwide up to 20g	2
167	FS26	Worldwide up to 40g	2
Arctic tern			
168	FS21	1st up to 100g	2
169	FS22	1st Large	2
170	FS23	Europe up to 20g	2
171	FS24	Worldwide up to 10g	2
172	FS25	Worldwide up to 20g	2
173	FS26	Worldwide up to 40g	2



Machin Commemorative FDC 14/8/11



Machin Commemorative - lower half of data string missing.

Arnold Machin 1919-99

174		FS1a	1st up to 100g	2	
174	a	FS1a	Machin 1919-99	2	Top half of date only
174	b	FS1a	Machin 1919-99	2	Top half of data string
175		FS2a	1st Large	2	
176		FS3a	Europe up to 20g	2	
177		FS4a	Worldwide up to 10g	2	
178		FS5a	Worldwide up to 20g	2	
179			Worldwide up to 40g	2	



V2 Upgrade but with font 1 and missing “up to 10g” version and the “40g” version with mixed font 1 and 2.

Birds 3

Greylag goose

180	FS16	1st up to 100g	1	
181	FS17	1st Large	1	
182	FS18	Europe up to 20g	1	
183	FS19	Worldwide up to 10g	1	
184	FS19	Worldwide up to 10g	1	Missing “up to 10g”
185	FS20	Worldwide up to 20g	1	
186		Worldwide up to 40g	1	
187		Worldwide up to 40g	1/2	“up to 40g” in font 2

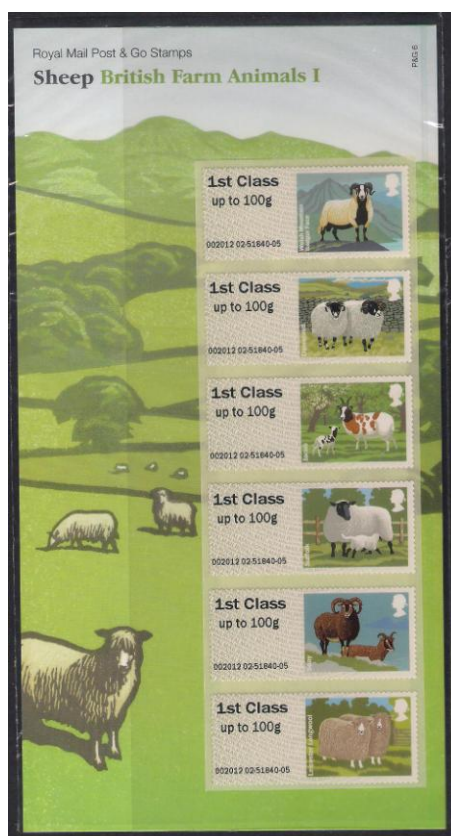
Kingfisher

188	FS16	1st up to 100g	1	
189	FS17	1st Large	1	
190	FS18	Europe up to 20g	1	
191	FS19	Worldwide up to 10g	1	
192	FS19	Worldwide up to 10g	1	Missing “up to 10g”
193	FS20	Worldwide up to 20g	1	
194		Worldwide up to 40g	1	
195		Worldwide up to 40g	1/2	“up to 40g” in font 2

Moorhen

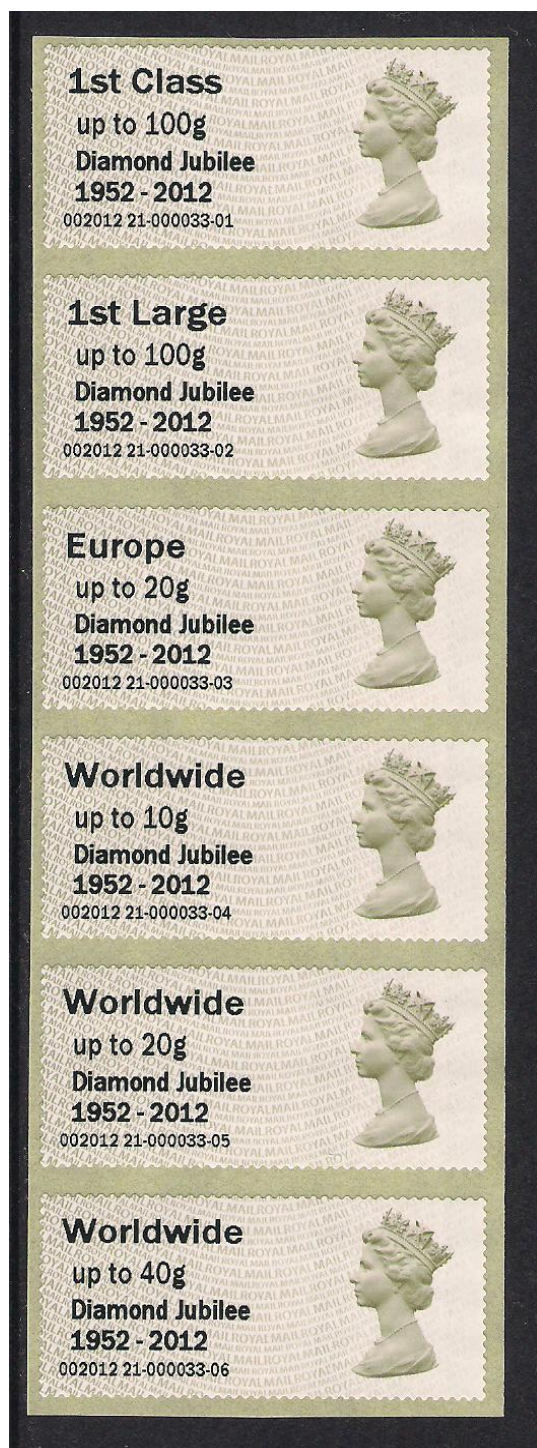
196	FS16	1st up to 100g	1	
197	FS17	1st Large	2	
198	FS18	Europe up to 20g	1	
199	FS19	Worldwide up to 10g	1	
200	FS19	Worldwide up to 10g	1	Missing “up to 10g”
201	FS20	Worldwide up to 20g	1	
202		Worldwide up to 40g	1	
203		Worldwide up to 40g	1/2	“up to 40g” in font 2

Great Crested Grebe					
204	FS16	1st up to 100g	1		
205	FS17	1st Large	1		
206	FS18	Europe up to 20g	1		
207	FS19	Worldwide up to 10g	1		
208	FS19	Worldwide up to 10g	1	Missing “up to 10g”	
209	FS20	Worldwide up to 20g	1		
210		Worldwide up to 40g	1		
211		Worldwide up to 40g	1/2	“up to 40g” in font 2	
Mute Swan					
212	FS16	1st up to 100g	1		
213	FS17	1st Large	1		
214	FS18	Europe up to 20g	1		
215	FS19	Worldwide up to 10g	1		
216	FS19	Worldwide up to 10g	1	Missing “up to 10g”	
217	FS20	Worldwide up to 20g	1		
218	FS20	Worldwide up to 40g	1		
219	FS20	Worldwide up to 40g	1/2	“up to 40g” in font 2	
Mallard					
220	FS16	1st up to 100g	1		
221	FS17	1st Large	1		
222	FS18	Europe up to 20g	1		
223	FS19	Worldwide up to 10g	1		
224	FS19	Worldwide up to 10g	1	Missing “up to 10g”	
225	FS20	Worldwide up to 20g	1		
226	FS20	Worldwide up to 40g	1		
227	FS20	Worldwide up to 40g	1/2	“up to 40g” in font 2	



FDC 24/2/12
Farm Yard Animals – Sheep (Hytech Presentation pack)

Welsh Mountain Badger Face					
228		FS27	1st up to 100g	2	
228	a	FS27	1st up to 100g	2	Presentation Pack -Hytech
229		FS28	1 st Large	2	
230		FS29	Europe up to 20g	2	
231		FS30	Worldwide up to 10g	2	
232		FS31	Worldwide up to 20g	2	
233		FS32	Worldwide up to 40g	2	
Dalesbred					
234		FS27	1st up to 100g	2	
234	a	FS27	1st up to 100g	2	Presentation Pack -Hytech
235		FS28	1 st Large	2	
236		FS29	Europe up to 20g	2	
237		FS30	Worldwide up to 10g	2	
238		FS31	Worldwide up to 20g	2	
239		FS32	Worldwide up to 40g	2	
Jacob					
240		FS27	1st up to 100g	2	
241	a	FS27	1st up to 100g	2	Presentation Pack -Hytech
242		FS28	1 st Large	2	
243		FS29	Europe up to 20g	2	
244		FS30	Worldwide up to 10g	2	
245		FS31	Worldwide up to 20g	2	
246		FS32	Worldwide up to 40g	2	
Suffolk					
247		FS27	1st up to 100g	2	
247	a	FS27	1st up to 100g	2	Presentation Pack -Hytech
248		FS28	1 st Large	2	
249		FS29	Europe up to 20g	2	
250		FS30	Worldwide up to 10g	2	
251		FS31	Worldwide up to 20g	2	
252		FS32	Worldwide up to 40g	2	
Soay					
253		FS27	1st up to 100g	2	
253	a	FS27	1st up to 100g	2	Presentation Pack -Hytech
254		FS28	1 st Large	2	
255		FS29	Europe up to 20g	2	
256		FS30	Worldwide up to 10g	2	
257		FS31	Worldwide up to 20g	2	
258		FS32	Worldwide up to 40g	2	
Leicestershire Longwool					
259		FS27	1st up to 100g	2	
259	a	FS27	1st up to 100g	2	Presentation Pack -Hytech
260		FS28	1 st Large	2	
261		FS29	Europe up to 20g	2	
262		FS30	Worldwide up to 10g	2	
263		FS31	Worldwide up to 20g	2	
264		FS32	Worldwide up to 40g	2	



Machin overprinted Diamond Jubilee 1952-2012

265	FS1a	1st up to 100g	2
266	FS2a	1 st Large	2
267	FS3a	Europe up to 20g	2
268	FS4a	Worldwide up to 10g	2
269	FS5a	Worldwide up to 20g	2
270		Worldwide up to 40g	2



FDC 24/4/12 – Pigs

Oxford Sandy and Black					
271		FS33	1st up to 100g	2	
271	a	FS33	1st up to 100g	2	Hytech Presentation Pack
272		FS34	1 st Large	2	
273		FS35	Europe up to 20g	2	
274		FS36	Worldwide up to 10g	2	
275		FS37	Worldwide up to 20g	2	
276		FS38	Worldwide up to 40g	2	
Welsh					
277		FS33	1st up to 100g	2	
277	a	FS33	1st up to 100g	2	Hytech Presentation Pack
278		FS34	1 st Large	2	
279		FS35	Europe up to 20g	2	
280		FS36	Worldwide up to 10g	2	
281		FS37	Worldwide up to 20g	2	
282		FS38	Worldwide up to 40g	2	
Tamworth					
283		FS33	1st up to 100g	2	
283	a	FS33	1st up to 100g	2	Hytech Presentation Pack
284		FS34	1 st Large	2	
285		FS35	Europe up to 20g	2	
286		FS36	Worldwide up to 10g	2	
287		FS37	Worldwide up to 20g	2	
288		FS38	Worldwide up to 40g	2	
British Saddleback					
289		FS33	1st up to 100g	2	
289	a	FS33	1st up to 100g	2	Hytech Presentation Pack
290		FS34	1 st Large	2	
291		FS35	Europe up to 20g	2	
292		FS36	Worldwide up to 10g	2	
293		FS37	Worldwide up to 20g	2	
294		FS38	Worldwide up to 40g	2	
Berkshire					
295		FS33	1st up to 100g	2	
295	a	FS33	1st up to 100g	2	Hytech Presentation Pack
296		FS34	1 st Large	2	
297		FS35	Europe up to 20g	2	
298		FS36	Worldwide up to 10g	2	
299		FS37	Worldwide up to 20g	2	
300		FS38	Worldwide up to 40g	2	
Gloucestershire Old Spot					
301		FS33	1st up to 100g	2	

301	a	FS33	1st up to 100g	2	Hytech Presentation Pack
302		FS34	1 st Large	2	
303		FS35	Europe up to 20g	2	
304		FS36	Worldwide up to 10g	2	
305		FS37	Worldwide up to 20g	2	
306		FS38	Worldwide up to 40g	2	



FDC 24/4/12 – Pigs. A handful of kiosks reverted to font 1.

Oxford Sandy and Black

307	FS33	1st up to 100g	1
308	FS34	1 st Large	1
309	FS35	Europe up to 20g	1
310	FS36	Worldwide up to 10g	1
311	FS37	Worldwide up to 20g	1
312	FS38	Worldwide up to 40g	1

Welsh

313	FS33	1st up to 100g	1
314	FS34	1 st Large	1
315	FS35	Europe up to 20g	1
316	FS36	Worldwide up to 10g	1
317	FS37	Worldwide up to 20g	1
318	FS38	Worldwide up to 40g	1

Tamworth

319	FS33	1st up to 100g	1
320	FS34	1 st Large	1
321	FS35	Europe up to 20g	1
322	FS36	Worldwide up to 10g	1
323	FS37	Worldwide up to 20g	1
324	FS38	Worldwide up to 40g	1

British Saddleback

325	FS33	1st up to 100g	1
326	FS34	1 st Large	1
327	FS35	Europe up to 20g	1
328	FS36	Worldwide up to 10g	1
329	FS37	Worldwide up to 20g	1
330	FS38	Worldwide up to 40g	1

Berkshire

331	FS33	1st up to 100g	1
332	FS34	1 st Large	1
333	FS35	Europe up to 20g	1
334	FS36	Worldwide up to 10g	1
335	FS37	Worldwide up to 20g	1
336	FS38	Worldwide up to 40g	1

Gloucestershire Old Spot

337	FS33	1st up to 100g	1
338	FS34	1 st Large	1
339	FS35	Europe up to 20g	1
340	FS36	Worldwide up to 10g	1
341	FS37	Worldwide up to 20g	1
342	FS38	Worldwide up to 40g	1



FDC 21/5/12 - Union Flag –Wincor-Nixdorf

343		FS39	1st up to 100g	2	
343	a	FS39	1st up to 100g	2	Hytech Presentation Pack
344		FS40	1 st Large	2	
345		FS41	Europe up to 20g	2	
346		FS42	Worldwide up to 10g	2	
347		FS43	Worldwide up to 20g	2	
348		FS44	Worldwide up to 40g	2	



26 September 2012 Pig Issue Hytech Stampex

Wincor-Nixdorf and Hytech ATM Stamps
Edition 1 (2013)

Oxford Sandy and Black			
349	FS33	1st up to 100g	2
350	FS34	1 st Large	2
351	FS35	Europe up to 20g	2
352	FS36	Worldwide up to 10g	2
353	FS37	Worldwide up to 20g	2
354	FS38	Worldwide up to 40g	2
Welsh			
355	FS33	1st up to 100g	2
356	FS34	1 st Large	2
357	FS35	Europe up to 20g	2
358	FS36	Worldwide up to 10g	2
359	FS37	Worldwide up to 20g	2
360	FS38	Worldwide up to 40g	2
Tamworth			
361	FS33	1st up to 100g	2
362	FS34	1 st Large	2
363	FS35	Europe up to 20g	2
364	FS36	Worldwide up to 10g	2
365	FS37	Worldwide up to 20g	2
366	FS38	Worldwide up to 40g	2
British Saddleback			
367	FS33	1st up to 100g	2
368	FS34	1 st Large	2
369	FS35	Europe up to 20g	2
370	FS36	Worldwide up to 10g	2
371	FS37	Worldwide up to 20g	2
372	FS38	Worldwide up to 40g	2
Berkshire			
373	FS33	1st up to 100g	2
374	FS34	1 st Large	2
375	FS35	Europe up to 20g	2
376	FS36	Worldwide up to 10g	2
377	FS37	Worldwide up to 20g	2
378	FS38	Worldwide up to 40g	2
Gloucestershire Old Spot			
379	FS33	1st up to 100g	2
380	FS34	1 st Large	2
381	FS35	Europe up to 20g	2
382	FS36	Worldwide up to 10g	2
383	FS37	Worldwide up to 20g	2
384	FS38	Worldwide up to 40g	2



Flag Issue with Jubilee overprint- Hytech

385		FS39	1st up to 100g	2	
385	a	FS39	1st up to 100g	2	Year spread indented
386		FS40	1 st Large	2	
386	a	FS40	1 st Large	2	Year spread indented
387		FS41	Europe up to 20g	2	
387	a	FS41	Europe up to 20g	2	Year spread indented
388		FS42	Worldwide up to 10g	2	
388	a	FS42	Worldwide up to 10g	2	Year spread indented
389		FS43	Worldwide up to 20g	2	
389	a	FS43	Worldwide up to 20g	2	Year spread indented
390		FS44	Worldwide up to 40g	2	
390	a	FS44	Worldwide up to 40g	2	Year spread indented



FDC 28/9/12 – Cattle. Wincor-Nixdorf Version

White Park					
391		FS45	1st up to 100g	2	
391	a	FS45	1st up to 100g	2	Presentation Pack
392		FS46	1 st Large	2	
393		FS47	Europe up to 20g	2	
394		FS48	Worldwide up to 10g	2	
395		FS49	Worldwide up to 20g	2	
396		FS50	Worldwide up to 40g	2	
Red Poll					
397		FS45	1st up to 100g	2	
397	a	FS45	1st up to 100g	2	Presentation Pack
398		FS46	1 st Large	2	
399		FS47	Europe up to 20g	2	
400		FS48	Worldwide up to 10g	2	
401		FS49	Worldwide up to 20g	2	
402		FS50	Worldwide up to 40g	2	
Aberdeen Angus					
403		FS45	1st up to 100g	2	
403	a	FS45	1st up to 100g	2	Presentation Pack
404		FS46	1 st Large	2	
405		FS47	Europe up to 20g	2	
406		FS48	Worldwide up to 10g	2	
407		FS49	Worldwide up to 20g	2	
408		FS50	Worldwide up to 40g	2	
Irish Molled					
409		FS45	1st up to 100g	2	
409	a	FS45	1st up to 100g	2	Presentation Pack
410		FS46	1 st Large	2	
411		FS47	Europe up to 20g	2	
412		FS48	Worldwide up to 10g	2	
413		FS49	Worldwide up to 20g	2	
414		FS50	Worldwide up to 40g	2	
Welsh Black					
415		FS45	1st up to 100g	2	
415	a	FS45	1st up to 100g	2	Presentation Pack
416		FS46	1 st Large	2	
417		FS47	Europe up to 20g	2	
418		FS48	Worldwide up to 10g	2	
419		FS49	Worldwide up to 20g	2	
420		FS50	Worldwide up to 40g	2	
Highland					
421		FS45	1st up to 100g	2	
421	a	FS45	1st up to 100g	2	Presentation Pack
422		FS46	1 st Large	2	
423		FS47	Europe up to 20g	2	
424		FS48	Worldwide up to 10g	2	
425		FS49	Worldwide up to 20g	2	
426		FS50	Worldwide up to 40g	2	



FDC 28/9/12 – Cattle. Hytech Version Stampex

White Park

427	FS45	1st up to 100g	2
428	FS46	1 st Large	2
429	FS47	Europe up to 20g	2
430	FS48	Worldwide up to 10g	2
431	FS49	Worldwide up to 20g	2
432	FS50	Worldwide up to 40g	2

Red Poll

433	FS45	1st up to 100g	2
434	FS46	1 st Large	2
435	FS47	Europe up to 20g	2
436	FS48	Worldwide up to 10g	2
437	FS49	Worldwide up to 20g	2
438	FS50	Worldwide up to 40g	2

Aberdeen Angus

439	FS45	1st up to 100g	2
440	FS46	1 st Large	2
441	FS47	Europe up to 20g	2
442	FS48	Worldwide up to 10g	2
443	FS49	Worldwide up to 20g	2
444	FS50	Worldwide up to 40g	2

Irish Molled

445	FS45	1st up to 100g	2
446	FS46	1 st Large	2
447	FS47	Europe up to 20g	2
448	FS48	Worldwide up to 10g	2
449	FS49	Worldwide up to 20g	2
450	FS50	Worldwide up to 40g	2

Welsh Black

451	FS45	1st up to 100g	2
452	FS46	1 st Large	2
453	FS47	Europe up to 20g	2
454	FS48	Worldwide up to 10g	2
455	FS49	Worldwide up to 20g	2
456	FS50	Worldwide up to 40g	2

Highland

457	FS45	1st up to 100g	2
458	FS46	1 st Large	2
459	FS47	Europe up to 20g	2
460	FS48	Worldwide up to 10g	2
461	FS49	Worldwide up to 20g	2
462	FS50	Worldwide up to 40g	2



FDC 28/9/12 – Cattle. Hytech Version Stampex Diamond Jubilee overprint.

Jubilee Overprint was applied to the Cattle issue briefly at Stampex. The kiosk used was B1 which was one of the backroom desk top kiosks used for producing pre-ordered dealers' stock.

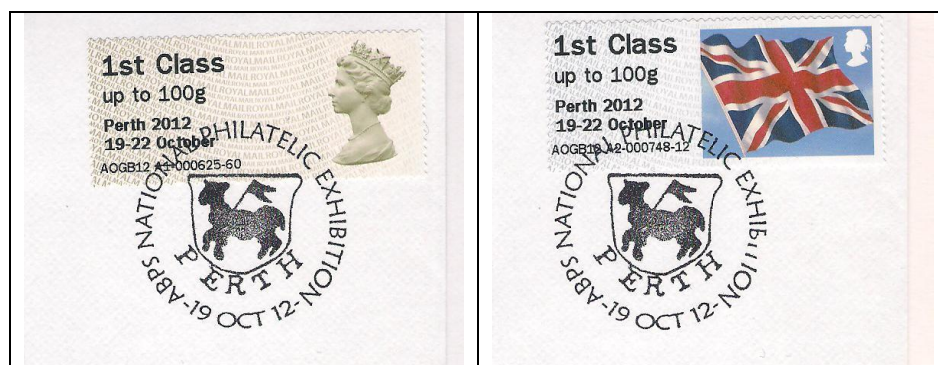
White Park			
463	FS45	1st up to 100g	2
464	FS46	1 st Large	2
465	FS47	Europe up to 20g	2
466	FS48	Worldwide up to 10g	2
467	FS49	Worldwide up to 20g	2
468	FS50	Worldwide up to 40g	2

Red Poll			
469	FS45	1st up to 100g	2
470	FS46	1 st Large	2
471	FS47	Europe up to 20g	2
472	FS48	Worldwide up to 10g	2
473	FS49	Worldwide up to 20g	2
474	FS50	Worldwide up to 40g	2
Aberdeen Angus			
475	FS45	1st up to 100g	2
476	FS46	1 st Large	2
477	FS47	Europe up to 20g	2
478	FS48	Worldwide up to 10g	2
479	FS49	Worldwide up to 20g	2
480	FS50	Worldwide up to 40g	2
Irish Molled			
481	FS45	1st up to 100g	2
482	FS46	1 st Large	2
483	FS47	Europe up to 20g	2
484	FS48	Worldwide up to 10g	2
485	FS49	Worldwide up to 20g	2
486	FS50	Worldwide up to 40g	2
Welsh Black			
487	FS45	1st up to 100g	2
488	FS46	1 st Large	2
489	FS47	Europe up to 20g	2
490	FS48	Worldwide up to 10g	2
491	FS49	Worldwide up to 20g	2
492	FS50	Worldwide up to 40g	2
Highland			
493	FS45	1st up to 100g	2
494	FS46	1 st Large	2
495	FS47	Europe up to 20g	2
496	FS48	Worldwide up to 10g	2
497	FS49	Worldwide up to 20g	2
498	FS50	Worldwide up to 40g	2

Cattle - A handful of kiosks reverted to font 1

White Park			
499	FS45	1 st up to 100g	1
500	FS46	1 st Large	1
501	FS47	Europe up to 20g	1
502	FS48	Worldwide up to 10g	1
503	FS49	Worldwide up to 20g	1
504	FS50	Worldwide up to 40g	1
Red Poll			
505	FS45	1 st up to 100g	1
506	FS46	1 st Large	1
507	FS47	Europe up to 20g	1
508	FS48	Worldwide up to 10g	1
509	FS49	Worldwide up to 20g	1
510	FS50	Worldwide up to 40g	1
Aberdeen Angus			
511	FS45	1 st up to 100g	1
512	FS46	1 st Large	1
513	FS47	Europe up to 20g	1

514	FS48	Worldwide up to 10g	1
515	FS49	Worldwide up to 20g	1
516	FS50	Worldwide up to 40g	1
Irish Molled			
517	FS45	1 st up to 100g	1
518	FS46	1 st Large	1
519	FS47	Europe up to 20g	1
520	FS48	Worldwide up to 10g	1
521	FS49	Worldwide up to 20g	1
522	FS50	Worldwide up to 40g	1
Welsh Black			
523	FS45	1st up to 100g	1
524	FS46	1 st Large	1
525	FS47	Europe up to 20g	1
526	FS48	Worldwide up to 10g	1
527	FS49	Worldwide up to 20g	1
528	FS50	Worldwide up to 40g	1
Highland			
529	FS45	1st up to 100g	1
530	FS46	1 st Large	1
531	FS47	Europe up to 20g	1
532	FS48	Worldwide up to 10g	1
533	FS49	Worldwide up to 20g	1
534	FS50	Worldwide up to 40g	1



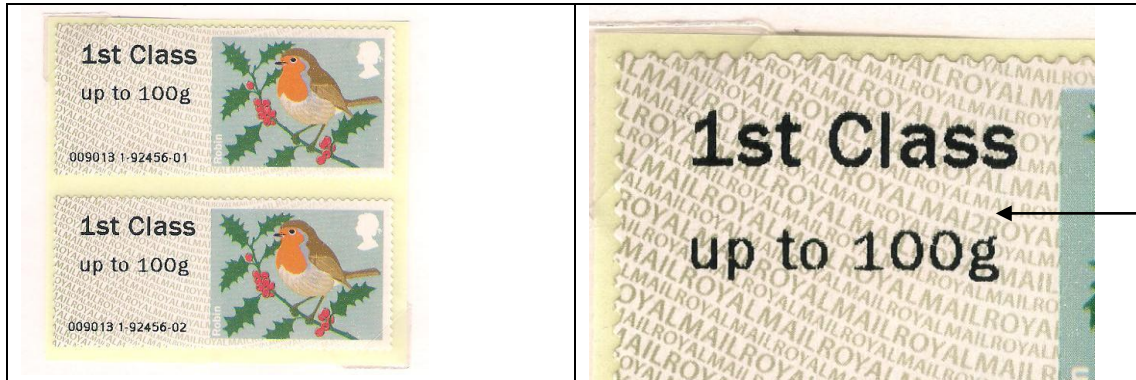
19-22 October 2012. Two public Hytech kiosks used at Stampex were taken to the 2012 Scottish Philatelic Exhibition and Congress at Perth. Machin and the Flag issue were used in both machines simultaneously between

Machin –Perth Overprint

535	FS1a	1st up to 100g	2
536	FS2a	1 st Large	2
537	FS3a	Europe up to 20g	2
538	FS4a	Worldwide up to 10g	2
539	FS5a	Worldwide up to 20g	2
540		Worldwide up to 40g	2

Flag – Perth Overprint

541	FS39	1st up to 100g	2
542	FS40	1 st Large	2
543	FS41	Europe up to 20g	2
544	FS42	Worldwide up to 10g	2
545	FS43	Worldwide up to 20g	2
546	FS44	Worldwide up to 40g	2



FDC 6/11/12 Robin – Christmas 2012

Robin – Wincor-Nixdorf version MA12 Security Print

547	1 st up to 100g	2
548	1 st Large	2
549	Europe up to 20g	2
550	Worldwide up to 10g	2
551	Worldwide up to 20g	2
552	Worldwide up to 40g	2



Normal and wide gap versions from the Galleries, Bristol.

Robin – Wincor-Nixdorf version MA12 Security Print Wide gap Variety (Bristol)

553	1 st up to 100g	2
554	1 st Large	2
555	Europe up to 20g	2
556	Worldwide up to 10g	2
557	Worldwide up to 20g	2
558	Worldwide up to 40g	2

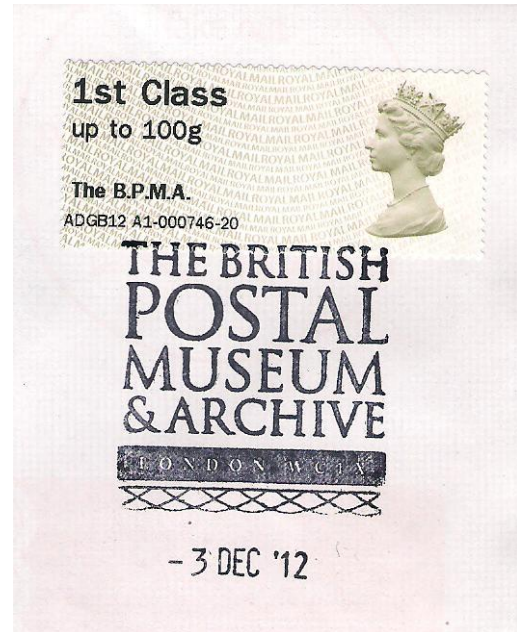


Robin – Hytech version MA12 Security Print. Kiosks A3 and A4 Camden Pop Up Post Office

559	1st up to 100g	2
560	1 st Large	2
561	Europe up to 20g	2
562	Worldwide up to 10g	2
563	Worldwide up to 20g	2
564	Worldwide up to 40g	2



Note: The two kiosks at the Camden Pop-up post office vended both the Robin and Machin faststamps. The only difference between these Machins and previous Hytech examples were the kiosk identifers. This was the first public use of kiosks A3 and A4. Two out of the ordinary cancels were available at this office with “EQUIPMENT TEAM TEMPORARY” and either the identifier 32 or 42. Example of both cancels are shown above with the robin or Machin varieties.



FDC 3 /12/12 Christmas Robin with BPMA overprint. Similarly the Machin with the same overprint.

BPMA Overprint on Robin MA12 Security Print Hytech A1

565	1st up to 100g	2
566	1 st Large	2
567	Europe up to 20g	2
568	Worldwide up to 10g	2
569	Worldwide up to 20g	2
570	Worldwide up to 40g	2

BPMA Overprint on Machin Hytech A1

571	FS1a 1st up to 100g	2
572	FS2a 1 st Large	2
573	FS3a Europe up to 20g	2
574	FS4a Worldwide up to 10g	2
575	FS5a Worldwide up to 20g	2
576	Worldwide up to 40g	2



FDC /1/13 BPMA Overprint on Flag

BPMA Overprint on Flag Hytech A1

577	FS39 1st up to 100g	2
578	FS40 1 st Large	2
579	FS41 Europe up to 20g	2
580	FS42 Worldwide up to 10g	2
581	FS43 Worldwide up to 20g	2
582	FS44 Worldwide up to 40g	2



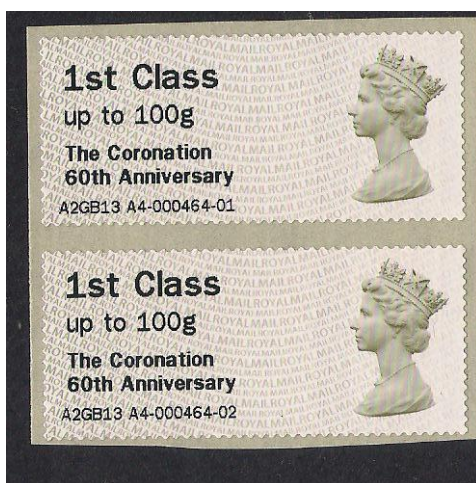
Hytech version at Stampex



Presentation pack Hytech version with indent on second line.

FDC 20/2/13 Machin Second Class – Hytech versions

583		FS51	2 nd up to 100g	2	
583	a	FS51	2 nd up to 100g	2	Presentation Pack
584		FS52	2 nd Large	2	
584	a	FS52	2 nd Large	2	Presentation Pack



FDC 20/2/13 Machin First Class – Hytech version. Coronation Overprint

585		FS1a	1st up to 100g	2	
585	a	FS1a	1st up to 100g	2	Coronation indented right
586		FS2a	1 st Large	2	
586	a	FS2a	1 st Large	2	Coronation indented right
587		FS3a	Europe up to 20g	2	
587	a	FS3a	Europe up to 20g	2	Coronation indented right
588		FS4a	Worldwide up to 10g	2	
588	a	FS4a	Worldwide up to 10g	2	Coronation indented right
589		FS5a	Worldwide up to 20g	2	
589	a	FS5a	Worldwide up to 20g	2	Coronation indented right
590			Worldwide up to 40g	2	
590	a		Worldwide up to 40g	2	Coronation indented right



Two varieties of the Coronation overprint. (Source: Norphil blog)



Presentation pack with second line indented to the right. Hytech.



Hytech kiosk with service details lined up to the left.

FDC 22/2/13 Freshwater Life 1 – Ponds Hytech.

Emperor Dragonfly					
591		FS53	1st up to 100g	2	
591	a	FS53	1st up to 100g	2	Presentation Pack
592		FS54	1 st Large	2	
593		FS55	Europe up to 20g	2	
594		FS56	Worldwide up to 10g	2	
595		FS57	Worldwide up to 20g	2	
596		FS58	Worldwide up to 40g	2	
Glutinous Snail					
597		FS53	1st up to 100g	2	
597	a	FS53	1st up to 100g	2	Presentation Pack
598		FS54	1 st Large	2	
599		FS55	Europe up to 20g	2	
600		FS56	Worldwide up to 10g	2	
601		FS57	Worldwide up to 20g	2	
602		FS58	Worldwide up to 40g	2	
Lesser Silver Water Beetle					
603		FS53	1st up to 100g	2	
603	a	FS53	1st up to 100g	2	Presentation Pack
604		FS54	1 st Large	2	
605		FS55	Europe up to 20g	2	
606		FS56	Worldwide up to 10g	2	
607		FS57	Worldwide up to 20g	2	
608		FS58	Worldwide up to 40g	2	
Three-spined Stickleback					
609		FS53	1st up to 100g	2	
609	a	FS53	1st up to 100g	2	Presentation Pack
610		FS54	1 st Large	2	
611		FS55	Europe up to 20g	2	
612		FS56	Worldwide up to 10g	2	
613		FS57	Worldwide up to 20g	2	
614		FS58	Worldwide up to 40g	2	
Smooth Newt					
615		FS53	1st up to 100g	2	
615	a	FS53	1st up to 100g	2	Presentation Pack
616		FS54	1 st Large	2	
617		FS55	Europe up to 20g	2	
618		FS56	Worldwide up to 10g	2	
619		FS57	Worldwide up to 20g	2	
620		FS58	Worldwide up to 40g	2	
Fairy Shrimp					
621		FS53	1st up to 100g	2	
621	a	FS53	1st up to 100g	2	
622		FS54	1 st Large	2	
623		FS55	Europe up to 20g	2	
624		FS56	Worldwide up to 10g	2	
625		FS57	Worldwide up to 20g	2	
626		FS58	Worldwide up to 40g	2	



FDC 22/2/13 Freshwater Life 1 – Ponds Wincor-Nixdorf Versions

Emperor Dragonfly			
627	FS53	1st up to 100g	2
628	FS54	1 st Large	2
629	FS55	Europe up to 20g	2
630	FS56	Worldwide up to 10g	2
631	FS57	Worldwide up to 20g	2
632	FS58	Worldwide up to 40g	2
Glutinous Snail			
633	FS53	1st up to 100g	2
634	FS54	1 st Large	2
635	FS55	Europe up to 20g	2
636	FS56	Worldwide up to 10g	2
637	FS57	Worldwide up to 20g	2
638	FS58	Worldwide up to 40g	2
Lesser Silver Water Beetle			
639	FS53	1st up to 100g	2
640	FS54	1 st Large	2
641	FS55	Europe up to 20g	2
642	FS56	Worldwide up to 10g	2
643	FS57	Worldwide up to 20g	2
644	FS58	Worldwide up to 40g	2
Three-spined Stickleback			
645	FS53	1st up to 100g	2

646	FS54	1 st Large	2
647	FS55	Europe up to 20g	2
648	FS56	Worldwide up to 10g	2
649	FS57	Worldwide up to 20g	2
650	FS58	Worldwide up to 40g	2
Smooth Newt			
651	FS53	1st up to 100g	2
652	FS54	1 st Large	2
653	FS55	Europe up to 20g	2
654	FS56	Worldwide up to 10g	2
655	FS57	Worldwide up to 20g	2
656	FS58	Worldwide up to 40g	2
Fairy Shrimp			
657	FS53	1st up to 100g	2
658	FS54	1 st Large	2
659	FS55	Europe up to 20g	2
660	FS56	Worldwide up to 10g	2
661	FS57	Worldwide up to 20g	2
662	FS58	Worldwide up to 40g	2



19-20 April 2013 Scottish Philatelic Congress. Kiosks A3 and A4. Machins and Flag.
 “84th Scottish Congress” overprint

Machin –Perth Overprint

663	FS1a	1st up to 100g	2
664	FS2a	1 st Large	2
665	FS3a	Europe up to 20g	2
666	FS4a	Worldwide up to 10g	2
667	FS5a	Worldwide up to 20g	2
678		Worldwide up to 40g	2

Flag – Perth Overprint

669	FS39	1st up to 100g	2
670	FS40	1 st Large	2
671	FS41	Europe up to 20g	2
672	FS42	Worldwide up to 10g	2
673	FS43	Worldwide up to 20g	2
674	FS44	Worldwide up to 40g	2



10-15 May 2013 World Stamp Expo, Melbourne Australia. Two kiosks A3 and A4. Overprint "Australia 2013 Stamp Expo". Ident for Australian usage A5AU13. Flag and Machin. Image from blog.norphil.co.uk. The Tallents House version with ident with A5GB13 has the overprint "Australia 2013 World Stamp Expo" (below).



Machin –Expo Overprint

675		FS1a	1st up to 100g	2	A5AU13
675	a	FS1a	1st up to 100g	2	A5GB13
676		FS2a	1 st Large	2	A5AU13
676	a	FS2a	1 st Large	2	A5GB13
677		FS3a	Europe up to 20g	2	A5AU13
677	a	FS3a	Europe up to 20g	2	A5GB13
678		FS4a	Worldwide up to 10g	2	A5AU13
678	a	FS4a	Worldwide up to 10g	2	A5GB13
679		FS5a	Worldwide up to 20g	2	A5AU13
679	a	FS5a	Worldwide up to 20g	2	A5GB13
680			Worldwide up to 40g	2	A5AU13
680	a		Worldwide up to 40g	2	A5GB13

Flag – Expo Overprint

681		FS39	1st up to 100g	2	A5AU13
681	a	FS39	1st up to 100g	2	A5GB13
682		FS40	1 st Large	2	A5AU13
682	a	FS40	1 st Large	2	A5GB13
683		FS41	Europe up to 20g	2	A5AU13
683	a	FS41	Europe up to 20g	2	A5GB13

684		FS42	Worldwide up to 10g	2	A5AU13
684	a	FS42	Worldwide up to 10g	2	A5GB13
685		FS43	Worldwide up to 20g	2	A5AU13
685	a	FS43	Worldwide up to 20g	2	A5GB13
686		FS44	Worldwide up to 40g	2	A5AU13
686	a	FS44	Worldwide up to 40g	2	A5GB13



FDC 25/6/13 Freshwater Life 2 – Ponds (FS59-64?)

Perch					
687			1st up to 100g	2	
687	a		1st up to 100g	2	Hytech Presentation Pack
688			1 st Large	2	
689			Europe up to 20g	2	
690			Worldwide up to 10g	2	
691			Worldwide up to 20g	2	
692			Worldwide up to 40g	2	
European Eel					
693			1st up to 100g	2	
693	a		1st up to 100g	2	Hytech Presentation Pack
694			1 st Large	2	
695			Europe up to 20g	2	
696			Worldwide up to 10g	2	
697			Worldwide up to 20g	2	
698			Worldwide up to 40g	2	
Crucian Carp					
699			1st up to 100g	2	
699	a		1st up to 100g	2	Hytech Presentation Pack
700			1 st Large	2	
701			Europe up to 20g	2	
702			Worldwide up to 10g	2	
703			Worldwide up to 20g	2	
704			Worldwide up to 40g	2	
Caddis-fly Larva					
705			1st up to 100g	2	
705	a		1st up to 100g	2	Hytech Presentation Pack
706			1 st Large	2	
707			Europe up to 20g	2	
708			Worldwide up to 10g	2	
709			Worldwide up to 20g	2	
710			Worldwide up to 40g	2	
Arctic Char					
711			1st up to 100g	2	
711	a		1st up to 100g	2	Hytech Presentation Pack

712		1 st Large	2	
713		Europe up to 20g	2	
714		Worldwide up to 10g	2	
715		Worldwide up to 20g	2	
716		Worldwide up to 40g	2	
Common Toad				
717		1st up to 100g	2	
717	a	1st up to 100g	2	Hytech Presentation Pack
718		1 st Large	2	
719		Europe up to 20g	2	
720		Worldwide up to 10g	2	
721		Worldwide up to 20g	2	
722		Worldwide up to 40g	2	

18/9/13 First Class – Hytech version. Coronation Overprint – Flag (expected at Stampex)

723	FS1a	1st up to 100g	2	
724	FS2a	1 st Large	2	
725	FS3a	Europe up to 20g	2	
726	FS4a	Worldwide up to 10g	2	
727	FS5a	Worldwide up to 20g	2	
728		Worldwide up to 40g	2	

20/9/13 Freshwater Life 3 – Ponds Hytech Versions (expected at Stampex) (FS65-70?)

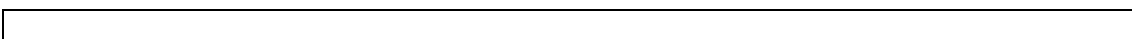
		1st up to 100g	2	
a		1st up to 100g	2	Presentation Pack
		1 st Large	2	
		Europe up to 20g	2	
		Worldwide up to 10g	2	
		Worldwide up to 20g	2	
		Worldwide up to 40g	2	
		1st up to 100g	2	
a		1st up to 100g	2	Presentation Pack
		1 st Large	2	
		Europe up to 20g	2	
		Worldwide up to 10g	2	
		Worldwide up to 20g	2	
		Worldwide up to 40g	2	
		1st up to 100g	2	
a		1st up to 100g	2	Presentation Pack
		1 st Large	2	
		Europe up to 20g	2	
		Worldwide up to 10g	2	
		Worldwide up to 20g	2	
		Worldwide up to 40g	2	

a	1st up to 100g	2	Presentation Pack
	1st up to 100g	2	
	1 st Large	2	
	Europe up to 20g	2	
	Worldwide up to 10g	2	
	Worldwide up to 20g	2	
	Worldwide up to 40g	2	
a	1st up to 100g	2	Presentation Pack
	1st up to 100g	2	
	1 st Large	2	
	Europe up to 20g	2	
	Worldwide up to 10g	2	
	Worldwide up to 20g	2	
	Worldwide up to 40g	2	
a	1st up to 100g	2	Presentation Pack
	1st up to 100g	2	
	1 st Large	2	
	Europe up to 20g	2	
	Worldwide up to 10g	2	
	Worldwide up to 20g	2	
	Worldwide up to 40g	2	

20/9/13 Freshwater Life 3 – Ponds Wincor-Nixdorf Version (FS65-70?)

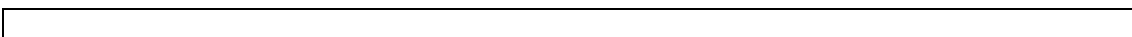
1st up to 100g	2
1 st Large	2
Europe up to 20g	2
Worldwide up to 10g	2
Worldwide up to 20g	2
Worldwide up to 40g	2
1st up to 100g	2
1 st Large	2
Europe up to 20g	2
Worldwide up to 10g	2
Worldwide up to 20g	2
Worldwide up to 40g	2
1st up to 100g	2
1 st Large	2
Europe up to 20g	2
Worldwide up to 10g	2
Worldwide up to 20g	2
Worldwide up to 40g	2
1st up to 100g	2
1 st Large	2
Europe up to 20g	2
Worldwide up to 10g	2
Worldwide up to 20g	2
Worldwide up to 40g	2

1st up to 100g	2
1 st Large	2
Europe up to 20g	2
Worldwide up to 10g	2
Worldwide up to 20g	2
Worldwide up to 40g	2
1st up to 100g	2
1 st Large	2
Europe up to 20g	2
Worldwide up to 10g	2
Worldwide up to 20g	2
Worldwide up to 40g	2



Robin – Wincor-Nixdorf version MA13? Security Print expected circa November 2013. To be confirmed.

1st up to 100g	2
1 st Large	2
Europe up to 20g	2
Worldwide up to 10g	2
Worldwide up to 20g	2
Worldwide up to 40g	2

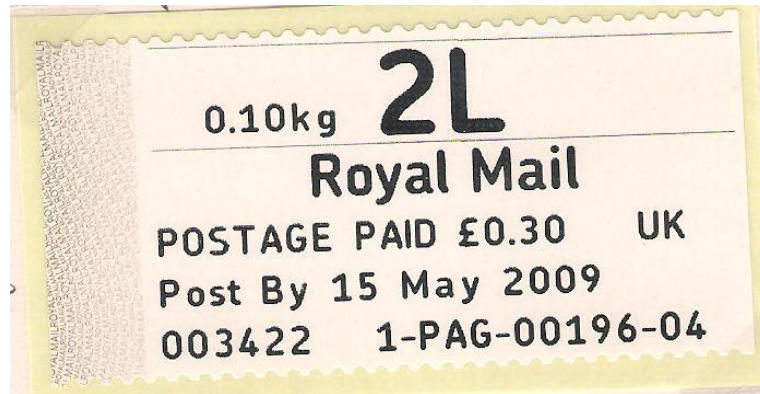


2014

1st up to 100g	2
1 st Large	2
Europe up to 20g	2
Worldwide up to 10g	2
Worldwide up to 20g	2
Worldwide up to 40g	2
1st up to 100g	2
1 st Large	2
Europe up to 20g	2
Worldwide up to 10g	2
Worldwide up to 20g	2
Worldwide up to 40g	2
1st up to 100g	2
1 st Large	2
Europe up to 20g	2
Worldwide up to 10g	2
Worldwide up to 20g	2
Worldwide up to 40g	2
1st up to 100g	2
1 st Large	2
Europe up to 20g	2
Worldwide up to 10g	2

Worldwide up to 20g	2
Worldwide up to 40g	2
1st up to 100g	2
1 st Large	2
Europe up to 20g	2
Worldwide up to 10g	2
Worldwide up to 20g	2
Worldwide up to 40g	2
1st up to 100g	2
1 st Large	2
Europe up to 20g	2
Worldwide up to 10g	2
Worldwide up to 20g	2
Worldwide up to 40g	2

Post and Go



Post and Go – Horizon style

PAG1		Horizon style 2nd (2L)	Imperf
PAG1	a	Horizon style 2nd (2L)	Perf x imperf
PAG1	b	Horizon style	Wrong date on label
PAG2		Horizon style 2nd large (2LL)	Imperf
PAG2	a	Horizon style 2nd large (2LL)	Perf x imperf
PAG2	b	Horizon style 2nd large (2LL)	Smaller font
PAG3		Horizon style 1st (1L)	Imperf
PAG3	a	Horizon style 1st (1L)	Perf x imperf
PAG4		Horizon style 1st large (1LL)	Imperf
PAG4	a	Horizon style 1st large (1LL)	Perf x imperf
PAG5		Horizon style (A)	Imperf
PAG5	a	Horizon style (A)	Perf x imperf
PAG6		Horizon style (A small packet)	Imperf
PAG6	a	Horizon style (A small packet)	Perf x imperf
PAG7		Horizon style (A printed paper)	Imperf
PAG7	a	Horizon style (A printed paper)	Perf x imperf
PAG8		Horizon style (2PK)	Imperf
PAG8	a	Horizon style (2PK)	Perf x imperf



Post and Go – Smartstamp style. Perf x Imperf.



Post and Go – Smartstamp style Manchester fault

This fault was reported at three offices 003422 Spring Gardens Manchester, 010937 Slindon Street Portsmouth and 014937 Fareham.

PAG9	Smart stamp style 2nd (2L)	
PAG9 a	Smart stamp style "Manchester fault"	
PAG10	Smart stamp style 2nd large (2LL)	
PAG10 a	Smart stamp style	PA missing in data string
PAG10 b	Smart stamp style "Manchester fault"	
PAG11	Smart stamp style 1st (1L)	
PAG11 a	Smart stamp style "Manchester fault"	
PAG11 b	Smart stamp style	Wrong date on label
PAG12	Smart stamp style 1st large (1LL)	
PAG12 a	Smart stamp style "Manchester fault"	
PAG13	Smart stamp style (A)	
PAG13 a	Smart stamp style "Manchester fault"	
PAG14	Smart stamp style (A small packet)	
PAG14 a	Smart stamp style "Manchester fault"	
PAG15	Smart stamp style (A printed paper)	
PAG15 a	Smart stamp style "Manchester fault"	
PAG16	Smart stamp style (2PK)	
PAG16 a	Smart stamp style "Manchester fault"	



V2 Upgrade – additional services

PAG17	Smart stamp style RSF	V2 includes postcode
-------	-----------------------	----------------------

Note I have not made any distinction for the increase in postal rates in the listing above. The basic second class PAG has increased from 30p then to 32p and then 36p. As from 30 April 2012, the basic second class rate was raised to 50p. These price variations, in theory and practice, add to the possible number of PAG varieties available. Further rises in face values will occur as postal rates increase. Price changes may also be noted for the other services and heavier than the basic rate service.

Additional Material

A number of items associated with the both the Wincor-Nixdorf and Hytech kiosks have found their way onto the internet or directly into the hands of collectors. In addition, there is a suggestion that some items are being “manufactured” by those wishing to profit from “scarce” items. Other items do appear in the market place or in the post office. These include leaflets, receipts, blank labels and test labels. This section briefly illustrates some of this material.

There are a number of websites which give insights into how parts of both the Wincor-Nixdorf and Hytech systems work. These sites include on-line manuals supporting the software of the card payment systems and even some information on the operating systems. I do not feel it appropriate to indicate these sites as they are outside the scope of this publication.

Wincor-Nixdorf has some data available for those considering the purchase of the Propostale 2000 system as used in the Britain.

Stampex Hytech Varieties

Of the manufactured items reported are Bird 4 and Arnold Machin overprint faststamps from Autumn Stampex 2011. These were reportedly produced by pulling the leading edge of the strip of labels leading to mis-placed printing or missing text.



Source: e-bay

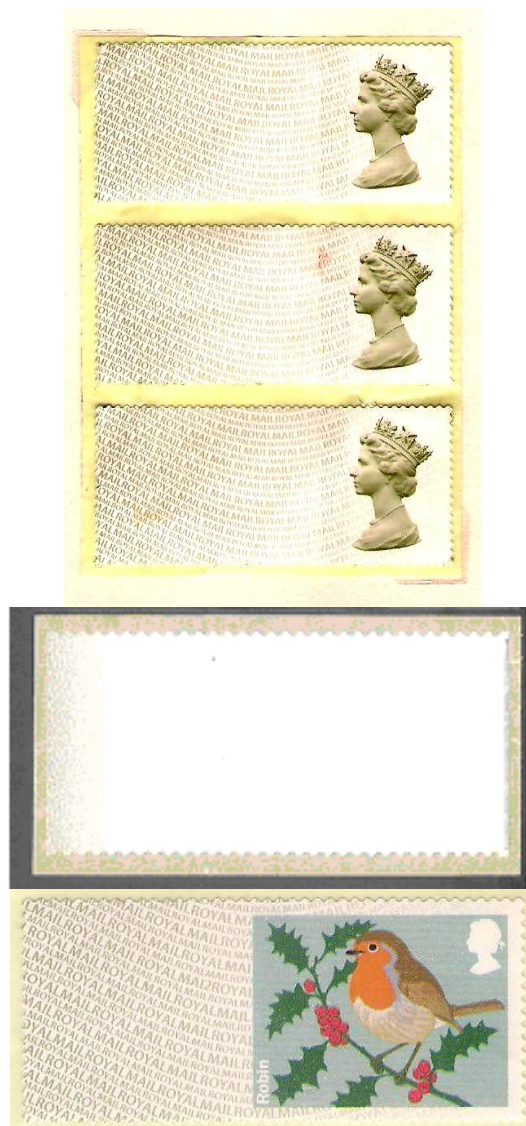
Both of these items and other similar ones have appeared on e-bay on or around that time. A number of sources on philatelic sites suggest that these items were produced by pulling hard on the labels as they were being printed. These have been reported as being available at around the £50 mark.

Stamp Magazine had correspondence questioning these “varieties”. Therefore, since there are serious questions as to their legitimacy since this procedure resulted in producing varieties for gain, I have not included these in my main listing but leave it up to individual collectors as to whether to include them in their collections. Hytech modified the kiosk to alleviate this problem.

However genuine versions of this fault did occur at Autumn Stampex 2012, the Camden Pop Up post office and at the BPMA (shown below) as the result of a printer fault.



Blank Labels



Sources: Author (top and bottom) and e-bay (middle)

Examples of both the Faststamps and the PAGs without the service overprint have entered the market place by various means usually by way of careless discards at post offices. These are from the ends of rolls and should have been disposed of as secure waste. These could be regarded as printer's waste and, in theory, could be repossessed by Royal Mail. Some "printer's waste" can be expensive to obtain such as the NZ H.M.S. Vanguard "stamps".

Blank examples of most of the issues to date have found their way on to e-bay.

Some examples may be found where these blanks have been used for the prepayment of postage because they give the appropriate responses to the automatic sorters currently in use within Royal Mail. I have seen evidence where blanks have been used for "signed for" services as well as normal postage successfully. Three examples are

illustrated below which passed through the South Wales Mail Centre during November and December 2012.



While it may be tempting to use blank labels for postage or to see how the item will be processed by the Post Office, I must advise against it. It could lead the user into conflict with Royal Mail and the Revenue Protection Section. It is technically fraud and the postal service is within its rights to recover the postage and costs.

Test Labels



Source: e-bay

As may be expected with all machinery of this type, test labels would be produced to ensure that the kiosk would be functioning correctly. Some of these are routinely given to collectors, etc at exhibitions and such like. These may be seen in the same light as trials for conventional stamps or as the test labels for stamp vending machines or PO training.



Vince Patel has also forwarded this test label for the system.

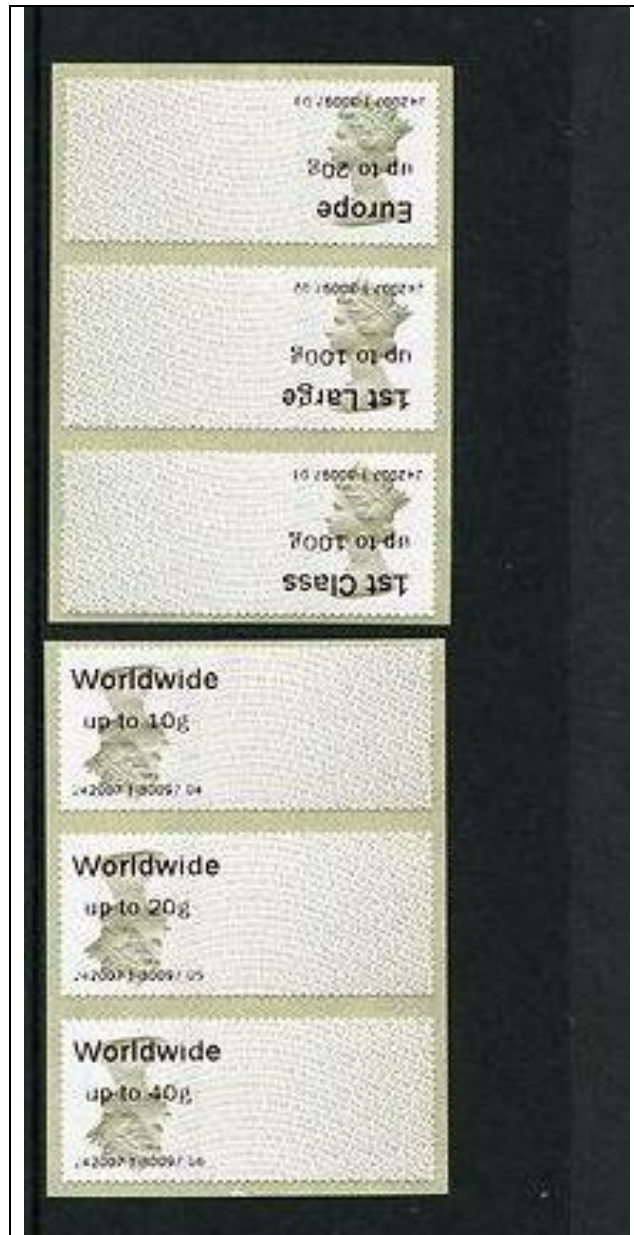
Other examples of test material exist including the printing of full character sets over two or three faststamps.



Image from Tony

Inverted Print

Circa October 2012, a new variety of the Machin appeared with the service markings inverted. It has been suggested that this variation arose as the result of the roll remainder being re-inserted into a kiosk after it was wrongly rewound.



Fake Values

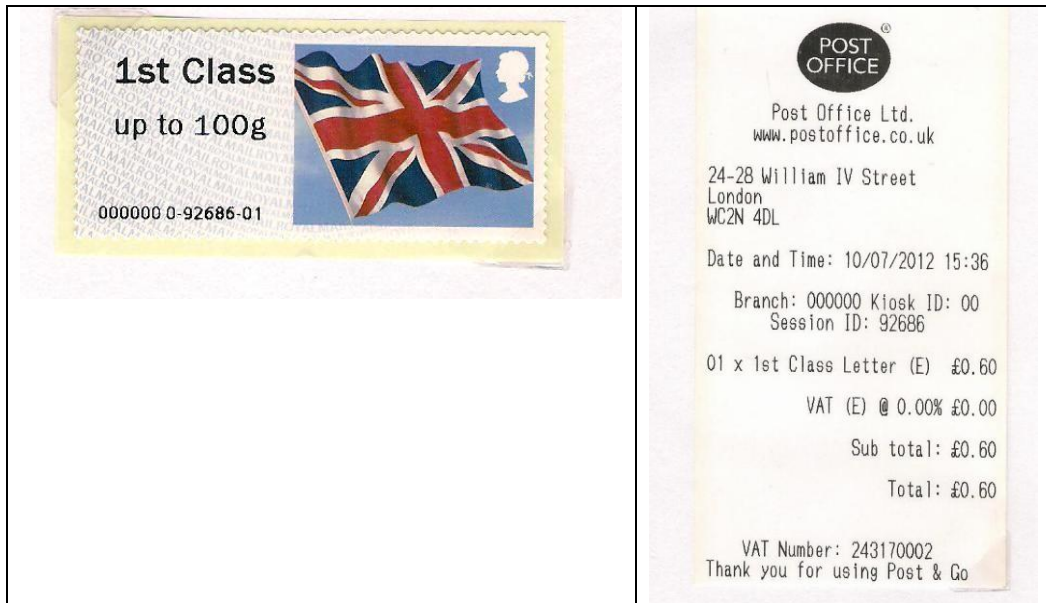
At the end of December 2012, I received an e-mail from a contact who wanted a bit of a background on four covers that he had received from Devon. He had some misgivings because they included a “new rate”. This was a “Worldwide Up to 30g” rate which has never been announced or officially sanctioned. There are also some problems with the font used. All of these stamps had the office ident of 000000 and kiosk 0.

The covers sent to Australia all have Exeter, Devon or Bideford cancels from the 29 November 2012. Clearly, these items were accepted by the post office in Devon as genuine “stamps” and passed into the system confirming that these were produced using Royal Mail stock. It would also appear that one item was accepted by a member of staff and received the Bideford desk cancel.





The 000000 ident was genuinely used at Trafalgar Square during the middle to end of July 2012 on flag stamps and I have seen examples of the Trafalgar Square event backed up by genuine receipts. Similar items but with Birds appeared a few weeks later at Archway, London N19 and have seen the receipts to support the stamps. Examples of both genuine items are also illustrated.



Example of the Flag issue from Trafalgar Square with the office ident 000000 and kiosk ident 0. The corresponding receipt is also illustrated.



Archway Birds with the 000000 office ident and 0 kiosk ident along with the corresponding receipt.

Smiler Sheets

Spring Stampex 2013 saw the inclusion of a new “service” – Smiler Sheets. This facility also was available at the Salisbury Stamp Fair. There is a suggestion that this facility will continue at other events. The kiosks were programmed to accept payment for Smilers and issued a receipt. The receipt was then taken to a staff member who took a photograph of the customer using an i-pad or used a pre-loaded image for use on the label. This image was then downloaded to the Laser Jet Pro 400 color M451nw which printed the label portions of the Smiler sheet. The top left label contained the logo for the stamp show/fair. Cost of the sheet was £9.95 (Spring Stampex 2103).



Since these sheets were not strictly produced by the Hytech system, these are not included in the main listing.

Label images tend to be of the purchaser but there were a couple of standard images available including the Hytech kiosk.



Unofficial Overprints

Two Hytech kiosks were present at the Salisbury Stamp Fair on March 2013 for public use. Royal Mail had decided that there would be no overprint for this event as the fair organisers did/could not provide facilities for those who were unable to attend to purchase examples of any overprints. However, Rushstamps purchased 6000 examples of the second class large Machin and had them overprinted with the show details. Their reasoning was that they wanted to give their customers something special. The stamps were from the desk top machine B2 which is used to produce pre-ordered items for dealers and sales from the philatelic stand at the event.

Unfortunately, this company may have set a precedent that could cause problems if others decide to follow suit and decide to produce their own slogan overprints.

It also should be noted that this activity essentially invalidates the stamp. Therefore, it could result in Royal Mail's Revenue Protection investigating and taking action against those involved.



Source: e-bay.

One example is known to have appeared for sale on e-bay as of 28 March 2013 and described as a “private overprint”. Other examples have since appeared and been sold.

Multiple examples are known where Rushstamp used their remaining stock for normal postage.



sale #	Session data	cancel date	Processed at	sale date	price + p/h	no of stamps	vendor	eBay no
1	003562-50, 003562-51, 003562-52, 003562-53, 003562-54, 003562-69, 003562-70, 003562-71	18-Mar-13	Southampton Mail Centre	25-Mar-13	£54.11	8	positively_postal	300879637835
2	003564-77	20-Mar-13	Southampton Mail Centre	02-Apr-13	£51.25	1	paulieboy50	190816843821

3		19-Mar-13	Southampton Mail Centre	07-Apr-13	£21 [UK bidders only]	1	lovecaroline20051ove	310643807727
4	003553-93	21-Mar-13	Royal Mail Dorset & SW...	10-Apr-13	£56	1	paulieboy50	190821137518
5	003550-30	02-Apr-13	Southampton ...	10-Apr-13	£31.01 [UK bidders only]	1	lovecaroline20051ove	310646904970

The above table of e-bay sales was compiled by Tony. The last two items are curious. The majority of items reported have routed through Southampton MC. However the fourth item was processed at Dorset (Bournemouth). The fifth item is the latest date reported. The item may be inspected by entering the eBay number plus ebay into Google and clicking on the links.



Another vendor (r20eeh) has since offered and sold ten of the overprints at £15 each. The example illustrated on the e-bay page had the session number 003526-41 which is lower than previously reported examples.

The June 2013 issue of *Stamp Magazine* reports that they understood that Royal Mail was not amused by the unauthorised overprinting and expressed its view very clearly to dealers and cover producers.

Box Labels

My thanks to Vince Patel for forwarding a number of pictures of box labels associated with the rolls used in both the Wincor-Nixdorf and Hytech kiosks. These labels are affixed to the boxes containing the blank stamps during transport and storage until use.





Images are courtesy of V.Patel.

Most of the above images are self explanatory but there are some interesting items to note. The second label in the left column has a spelling mistake – (Birds of Britain 1). There also seems to be two different sized rolls of the Christmas 2012 Robins - 1500 and 3000 stamps per roll. The reason for the larger roll size was to reduce the number of roll changes required during the busy Christmas period.

Similar box labels exist for the Horizon labels sold via the counter EPOS. Two examples are included for comparison.



Wincor-Nixdorf Receipts and Certificates of Posting

Three different headers were used on receipts before the introduction of the V2 software upgrade in 2011. These were Post Office oval, no logo and Wincor-Nixdorf logo.



Post Office Oval



Wincor-Nixdorf logo



No logo

The V2 upgrade standardised the header as the Post Office oval logo. This upgrade allows the production of certificates of posting and receipts for various signed for services. As a result of the Welsh Language Act, a bilingual version of these labels may be found. A certificate of posting and receipt from a Welsh office are illustrated below.

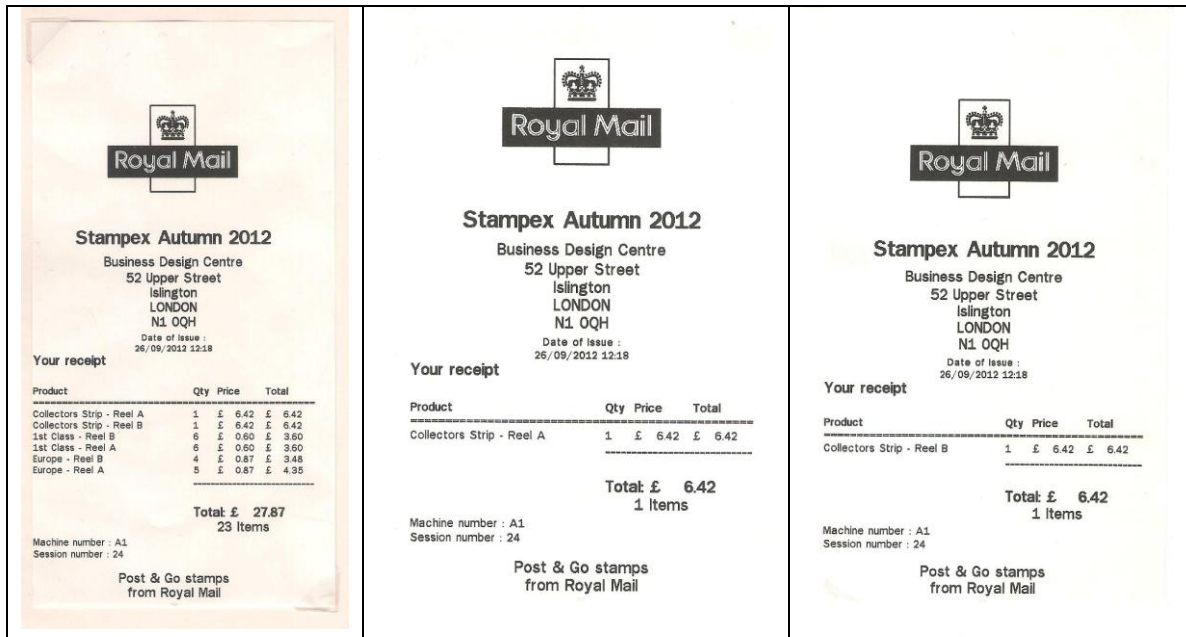


A fuller description of variations which may be found on the receipts from the Wincor-Nixdorf kiosks are covered in *ATM Informer* issues 4 and 5.

Hytech Receipts

The Hytech kiosks are rather generous with regards to receipts. They issue a receipt which covers the complete order, one for each collector's strip and another to cover the card payment. So if one purchases one of each collector's strips one receives four

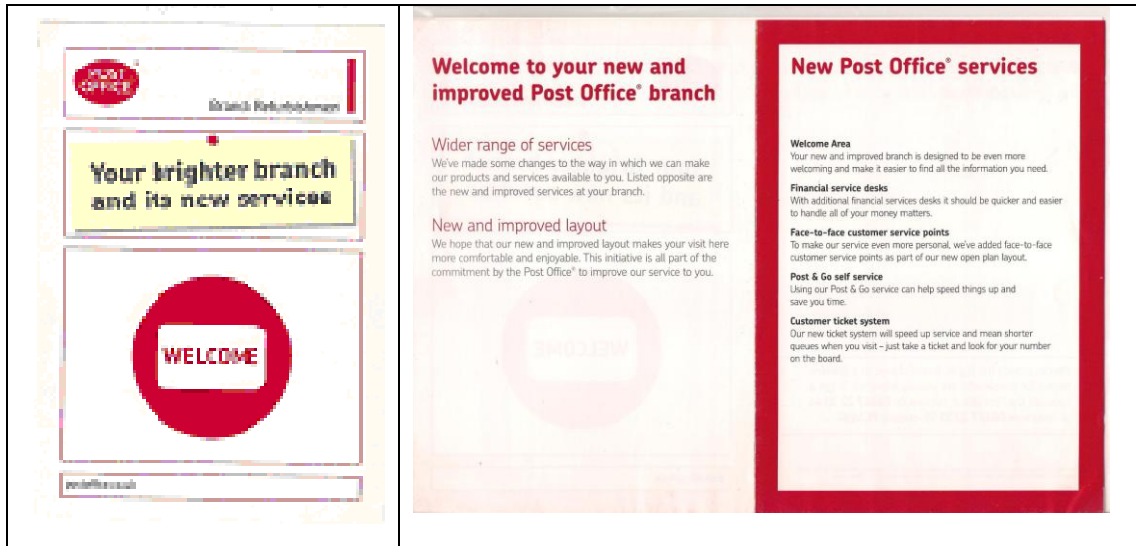
receipts for that session! This is illustrated here with three of the four receipts. The fourth has some card details on it hence it has not been reproduced here.



The same format has been used on these kiosks when used at other events and at Camden Pop-up Post Office (2012). The main difference from Stampex being the address of the venue of the event was used.

Leaflets

A number of leaflets associated with the kiosks, their operation and what was available for sale from the units or from Tallents House.



One of the first leaflets mentioning the Wincors services coded PL3634. The main thrust of the leaflet was to advertise the services available at the newly refurbished Crown Offices. The example illustrated was obtained from Manchester Spring Gardens but this leaflet was used throughout the system.

Another common issue leaflet (coded 3586 Aug 08) describes the new “Post & Go” service at the offices equipped with the Wincors. I have found this leaflet at a number of offices.



Fold out leaflets for the Birds and Farm Animal issues are known and sample pages from two of these are illustrated here.

Coasting to a beautiful conclusion

Birds of Britain is the first ever series of pictorial Post & Go Stamps in the UK. It is soon to be complete, when the fourth and final part is issued on 16 September.

Post & Go Stamps went on sale in 2008, when they were first trialled in The Galleries Post Office in Bristol; enabling customers to print self-adhesive stamps on demand from special kiosks. Such has been the popularity of this revolutionary idea that the kiosks are now available in 146 Post Office branches nationwide.

The first pictorial Post & Go Stamps were issued in September 2010, and although this series is almost complete, more are being planned for the future.

All of the stamps in the Birds of Britain series have celebrated different types of birdlife, and this final part looks at the wonderful species to be found around our coastline. As in the previous issues, these lovely stamps have been designed by Kate Stephens and illustrated by the renowned wildlife artist Robert Gillmor.



Stamps — Birds of Britain 4

Price £2.76
Code Z5004

Coasting along

The stamps in this issue feature a Puffin, Gannet, Oystercatcher, Ringed Plover, Cormorant and Arctic Tern. They are available as a sheetlet from Talents House at First Class values with a beautifully illustrated information card.

ADD THE FINAL ISSUE TO YOUR COLLECTION.

Order now at www.royalmail.com/postandgo or call 08457 641 641 (+44 131 316 7483 from overseas)

MISSED AN ISSUE? ORDER NOW!



Stamps — Birds of Britain 1

Price £2.76
Code Z5001

Not common or garden

The first in this collectable series featured garden birds that include the Blue Tit, Goldfinch, Wood Pigeon, Robin, House Sparrow and Starling. Each set comes on a delightful carrier that holds information about each bird and a to-scale illustration of its egg.

Stamps — Birds of Britain 2

Price £2.76
Code Z5002

Birds to be spotted
More garden birds represented as exquisite knockout illustrations, this issue focused on the Blackbird, Magpie, Long-tailed Tit, Chaffinch, Collared Dove, and the Greenfinch on another equally beautiful carrier.



Stamps — Birds of Britain 3

Price £2.76
Code Z5003

Our fairest waterfowl
Another stunning set of birds feature on these stamps, this time coming from the UK's inland waterways. The carrier card holds six illustrated stamps featuring the Mallard, Greylag Goose, Kingfisher, Moorhen, Mute Swan and the Great Crested Grebe.



Order now at www.royalmail.com/postandgo or call 08457 641 641 (+44 131 316 7483 from overseas)

first

Introducing the first part of our new pictorial Post & Go series looking at British Farm Animals.

Post & Go: Sheep — British Farm Animals 1
Issue date: Friday 24 February 2012

1st Class up to 100g

1st Class up to 100g

1st Class up to 100g

1st Class up to 100g

1st Class up to 100g

1st Class up to 100g

Our new Special issue is a shear delight

Our first pictorial Post & Go Stamp series, Birds of Britain, was a massive success. So we are delighted to announce a new, three-part series exploring some of the many traditional breeds of sheep, cattle and pigs to be found on British farms. The series begins by taking a closer look at six fascinating breeds of sheep, including the Leicester Longwool and Welsh Mountain Badger Face.

Stamps

Price £2.35
Code 25005

Very sheepish
Printed in a sheetlet and overprinted with First Class values, the Stamps come to you in a card carrier complete with details of each breed.

Buy now!
First Day Covers only available until
24 Feb
Don't miss out. This date cannot be extended.

First Day Cover Stamps

Price inland £3.79
Price overseas £3.56
Code 27005

Overprinted with First Class values, the new Stamps are affixed to the generic Post & Go cover and can be cancelled with your choice of a Talents House or Sheepdrove, Lambourn, Hungerford postmark.

Order now at www.royalmail.com/postandgo or call 08457 641 641 (+44 333 956 7683 from overseas)

The Camden Christmas Pop-up Post Office also had leaflets produced to advertise its presence and opening times. As I understand it, the leaflets were initially distributed

in the locale of the office but the most common place to find the leaflets was in the office itself.



References and Sources

My thanks to members of the Postal Mechanisation Study Circle, the British Postmark Society, the postagelabelsuk.com site and Norphil blog (blog.norphil.co.uk) for some of the data used. Material has also been taken from the *ATM Informer*. I acknowledge e-bay, V. Patel and *Stamp Magazine* for some of the images. *Gibbons Stamp Monthly* (GSM) and *Stamp Magazine* have been the sources of some of the information from collectors. The Gibbons catalogue numbers were extracted from GSM and sales literature from various dealers. I acknowledge the use of this data.

My thanks to R. de Vekey, A. Nixon, J. Fowler, T. Norgate, M. McNamara, P. Reynolds, V. Patel, J. Gray, P. Morton, Tony W, I. Billings and the many others who I have forgotten to record for their help and feedback during the preparation of this document. My thanks to the many Post Office staff at the various offices who have taken the time to answer my questions and assist in filling my requests for material.

Many of the items illustrated come from my own accumulation of material and may be found on the websites indicated at the start of this work.